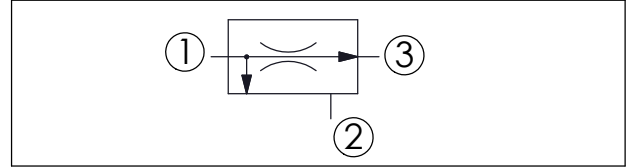
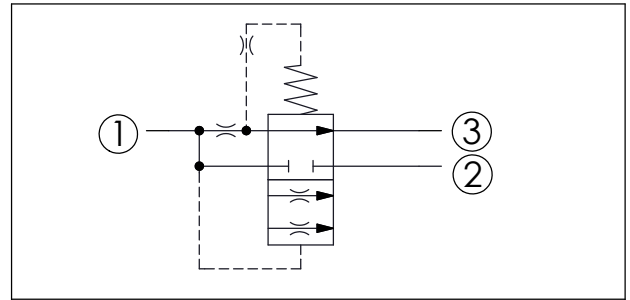
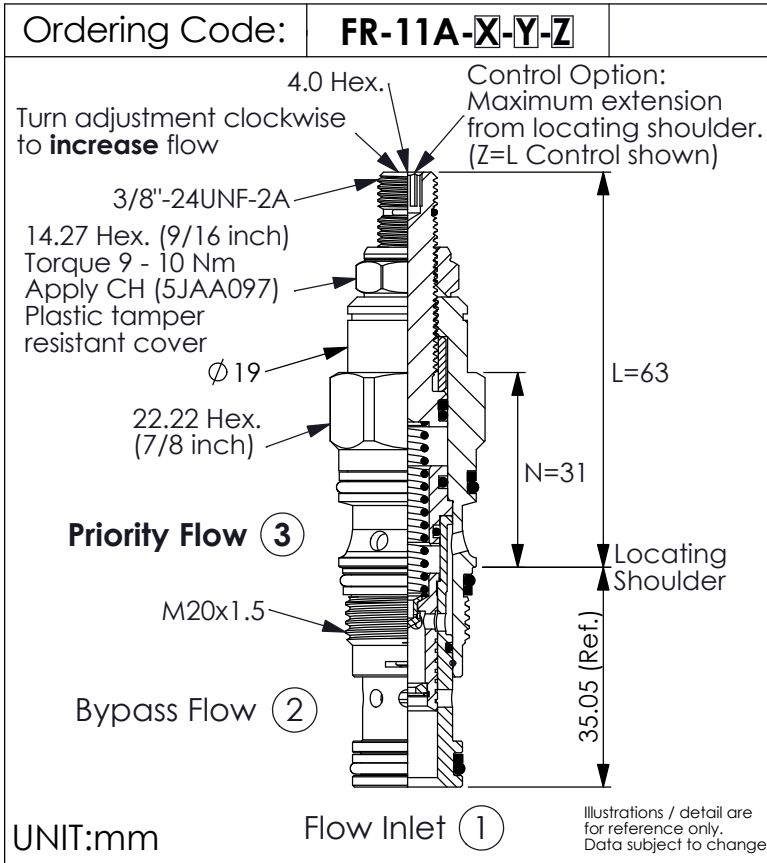


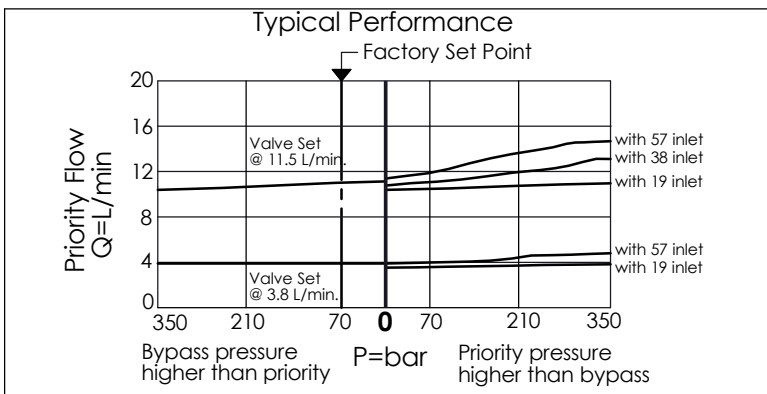
PRIORITY FLOW CONTROL VALVE (Fixed Orifice, Bypass/Restrictive, Pressure Compensated)



TECHNICAL DATA

Max. pressure:	350	bar
Maximum Inlet Flow:	60	l/min
Priority Flow Ranges:	0.4 - 23	l/min
Cavity-Tooling:	11A-3	
Installation torque:	40 - 50	Nm
Weight:	0.12 (Z=N)	0.15 (Z=L) kg

- Pressure at the bypass port (port 2) may exceed pressure at the priority port (port 3)
- Both priority and bypass flow are usable up to the system operating pressure
- Bypass flow is not available until priority flow requirements are satisfied
- Blocking priority flow will also block bypass flow



X	OPERATION	
3F	Fixed orifice, bypass/restrictive, pressure compensated	
<ul style="list-style-type: none"> If a momentary impact pressure is needed in the application, please consult our sales department. 		

Y	Priority Flow (Port 3) (customer must specify flow)	
0004	Example:	0.4 LPM
0008	Example:	0.8 LPM
0010	Example:	1.0 LPM
0012	Example:	1.2 LPM
0035	Example:	3.5 LPM
0045	Example:	4.5 LPM
0080	Example:	8.0 LPM
0100	Example:	10.0 LPM
0120	Example:	12.0 LPM
0200	Example:	20.0 LPM

- Customer must specify a flow rating
- Factory set flow ratings are within $\pm 10\%$ of the requested setting
- If you need specific flow accuracy, please contact WINNER's sales department

Z	OPTIONS	
N	Non-adjustable (Factory set at customer specified flow)	
L	Leakproof hex. socket screw. (Adjustment Ranges Approx. $\pm 25\%$)	
K	Handknob with Lock Knob. (Adjustment Ranges Approx. $\pm 25\%$) (Order Code: 6ZAK001)	