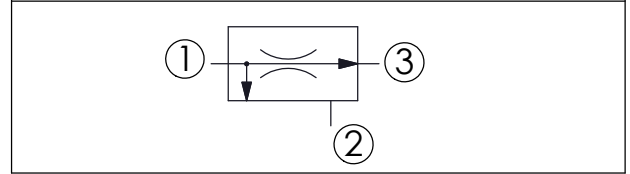
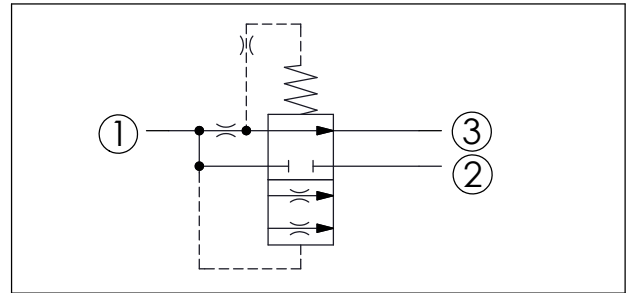
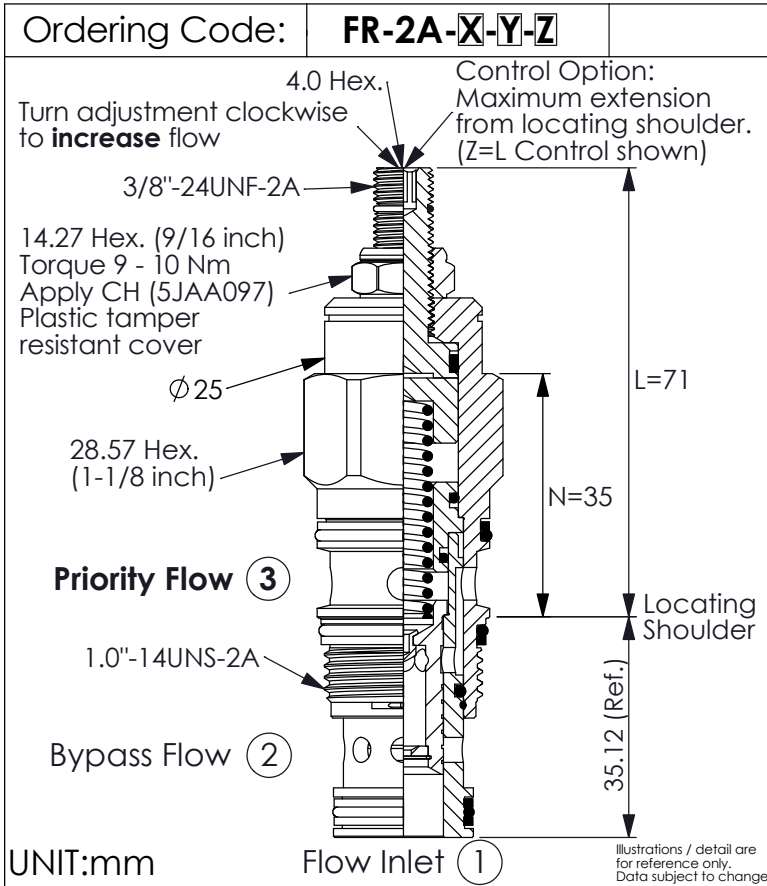


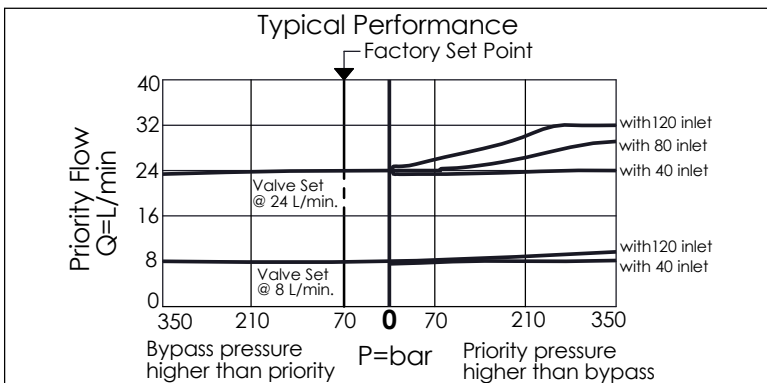
PRIORITY FLOW CONTROL VALVE (Fixed Orifice, Bypass/Restrictive, Pressure Compensated)



TECHNICAL DATA

Max. pressure:	350	bar
Maximum Inlet Flow:	120	l/min
Priority Flow Ranges:	0.4 - 50	l/min
Cavity-Tooling:	2A-3	
Installation torque:	60 - 70	Nm
Weight:	0.272 (Z=L)	kg

- Pressure at the bypass port (port ②) may exceed pressure at the priority port (port ③)
- Both priority and bypass flow are usable up to the system operating pressure
- Bypass flow is not available until priority flow requirements are satisfied
- Blocking priority flow will also block bypass flow



X	OPERATION	
3F	Fixed orifice, bypass/restrictive, pressure compensated	
	If a momentary impact pressure is needed in the application, please consult our sales department.	

Y	Priority Flow (Port ③) (customer must specify flow)
0004	Example: 0.4 LPM
0030	Example: 3.0 LPM
0050	Example: 5.0 LPM
0075	Example: 7.5 LPM
0120	Example: 12.0 LPM
0150	Example: 15.0 LPM
0170	Example: 17.0 LPM
0200	Example: 20.0 LPM
0230	Example: 23.0 LPM
0250	Example: 25.0 LPM
0290	Example: 29.0 LPM
0300	Example: 30.0 LPM
0350	Example: 35.0 LPM
0400	Example: 40.0 LPM
0450	Example: 45.0 LPM

- Customer must specify a flow rating
- Factory set flow ratings are within $\pm 10\%$ of the requested setting
- If you need specific flow accuracy, please contact WINNER's sales department

Z	OPTIONS	
N	Non-adjustable (Factory set at customer specified flow)	
L	Leakproof hex. socket screw. (Adjustment Ranges Approx. $\pm 15\%$)	
K	Handknob with Lock Knob. (Adjustment Ranges Approx. $\pm 15\%$) (Order Code: 6ZAK001)	