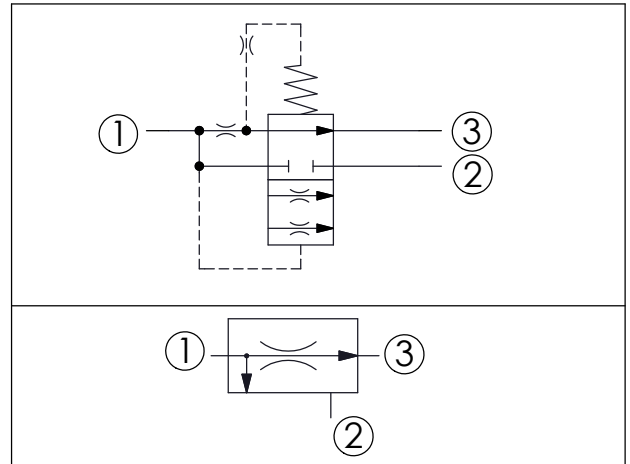
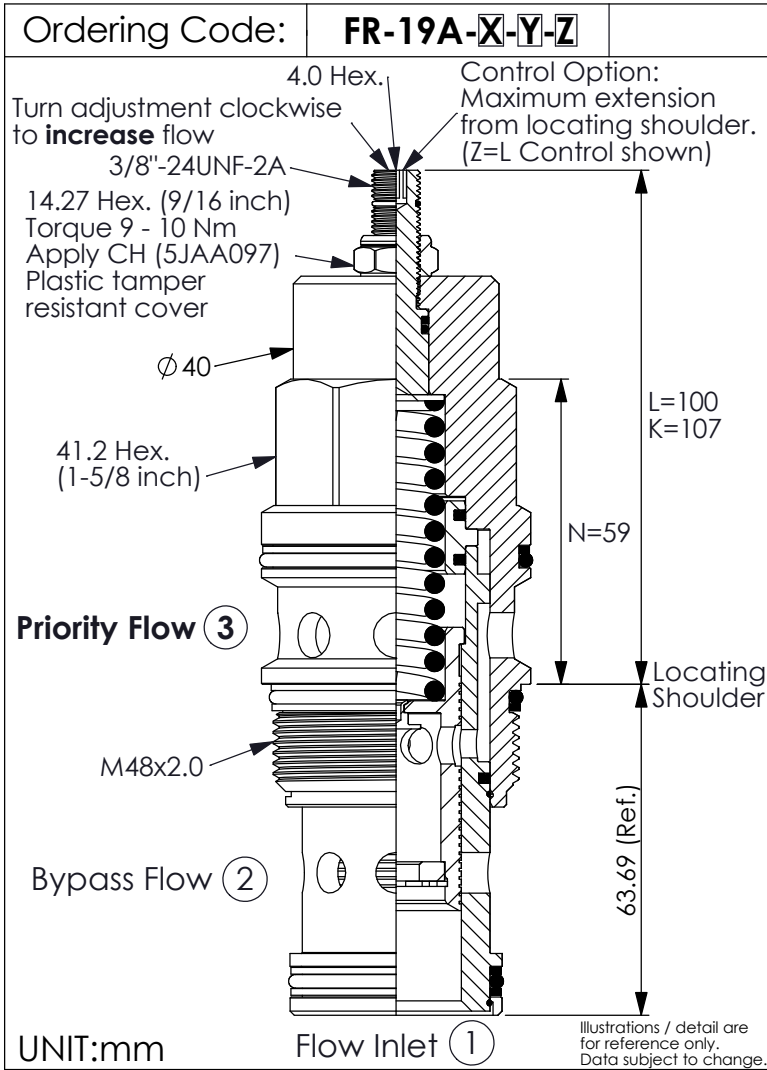


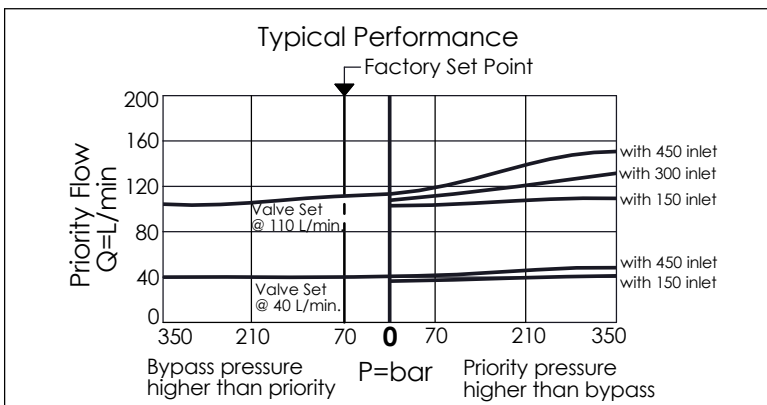
## PRIORITY FLOW CONTROL VALVE (Fixed Orifice, Bypass/Restrictive, Pressure Compensated)



### TECHNICAL DATA

Max. Operating pressure:	350 bar
Maximum Inlet Flow:	480 l/min
Priority Flow Ranges:	1 - 200 l/min
Cavity-Tooling:	19A-3 (19AB-3)
Installation torque:	465 - 500 Nm
Weight:	1.13 (Z=L) kg

- Pressure at the bypass port (port ②) may exceed pressure at the priority port (port ③)
- Both priority and bypass flow are usable up to the system operating pressure
- Bypass flow is not available until priority flow requirements are satisfied
- Blocking priority flow will also block bypass flow



<b>X</b>	<b>OPERATION</b>
<b>3F</b>	Fixed orifice, bypass/restrictive, pressure compensated
	If a momentary impact pressure is needed in the application, please consult our sales department.

Y	Priority Flow (Port ③) (customer must specify flow)
<b>0010</b>	Example: 1.0 LPM
<b>0950</b>	Example: 95 LPM
<b>1000</b>	Example: 100 LPM
<b>1100</b>	Example: 110 LPM
<b>1500</b>	Example: 150 LPM
<b>2000</b>	Example: 200 LPM

- Customer must specify a flow rating
- Factory set flow ratings are within  $\pm 10\%$  of the requested setting
- If you need specific flow accuracy, please contact WINNER's sales department

Z	OPTIONS
<b>N</b>	Non-adjustable (Factory set at customer specified flow)
<b>L</b>	Leakproof hex. socket screw. (Adjustment Ranges Approx. $\pm 15\%$ )
<b>K</b>	Handknob with Lock Knob. (Adjustment Ranges Approx. $\pm 15\%$ ) (Order Code: 6ZAK001)