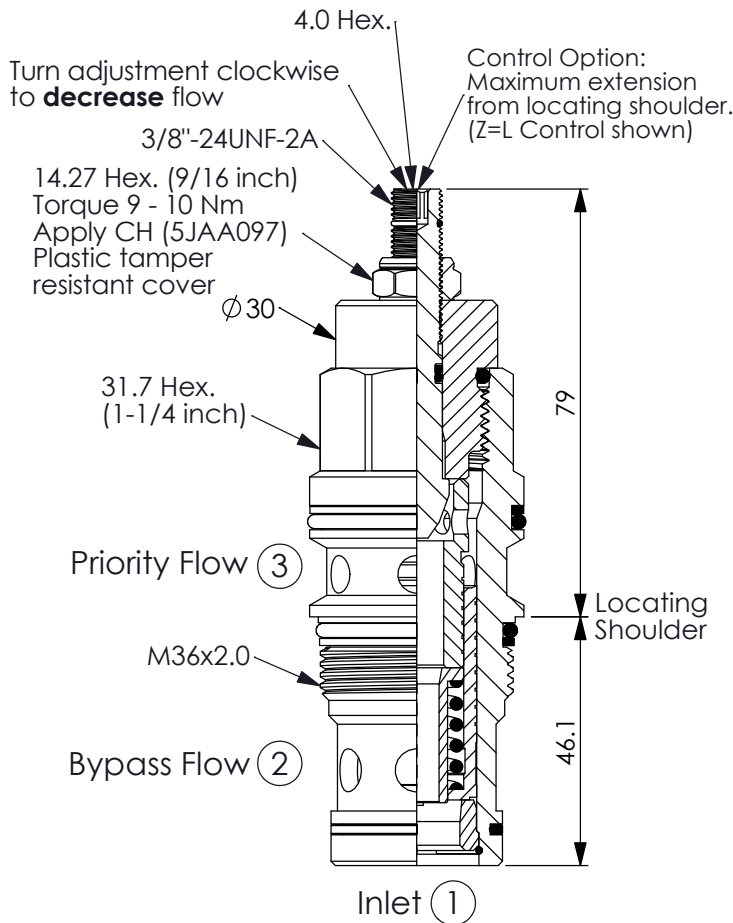
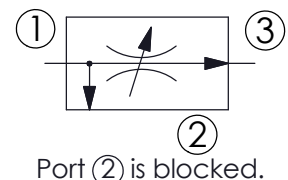
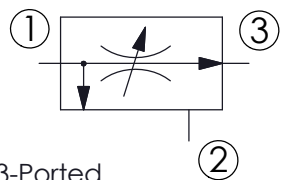
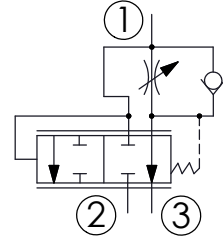


Ordering Code: **FR-17A-X-Y-Z**



UNIT:mm

Illustrations / detail are for reference only. Data subject to change.

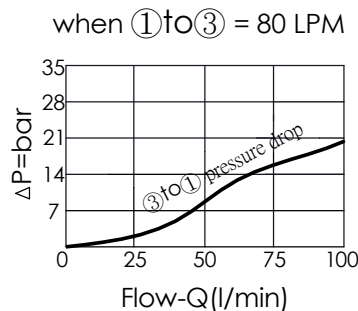
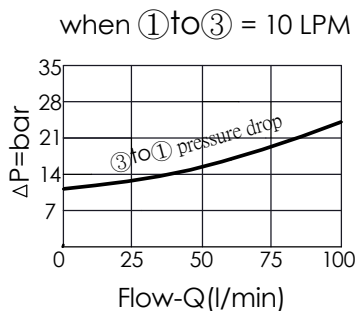
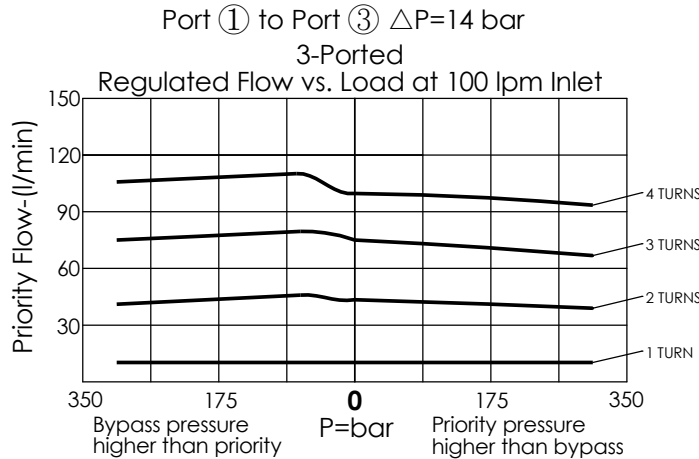


3-Ported.

Port ② is blocked.

TECHNICAL DATA

Max. pressure:	350	bar
Inlet flow at port ①:	100 LPM nominal	150 LPM max.
Priority Flow Ranges:	1 - 100	l/min
Cavity-Tooling:	17A-3	
Installation torque:	90 - 100	Nm
Weight:	0.57 (Z=L)	kg
Note:	It can be used as a priority-type flow regulator or a restrictive-type 2-way flow regulator when the bypass port (port ②) is blocked.	



X	OPERATION	
3A	3 Port, Reverse Flow, Bypass/Restrictive	

Y	PRIORITY FLOW	
	ADJUSTMENT RANGES	
1000	1 - 100 LPM	

Z	OPTIONS	
L	Leakproof hex. socket screw.	
K	Handknob with Lock Knob. (Order Code: 6ZAK001)	
T	Three-winged Handknob Kit.	