

## PRIORITY FLOW CONTROL VALVE (Bypass/Pressure compensated)

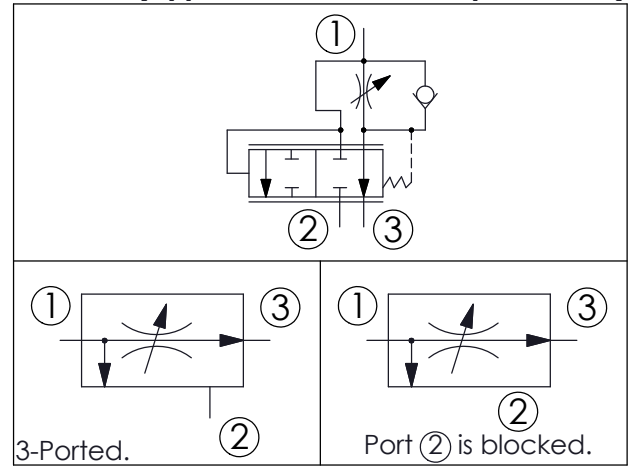
Ordering Code: **FR-19A-X-Y-Z**

Turn adjustment clockwise to **decrease** flow

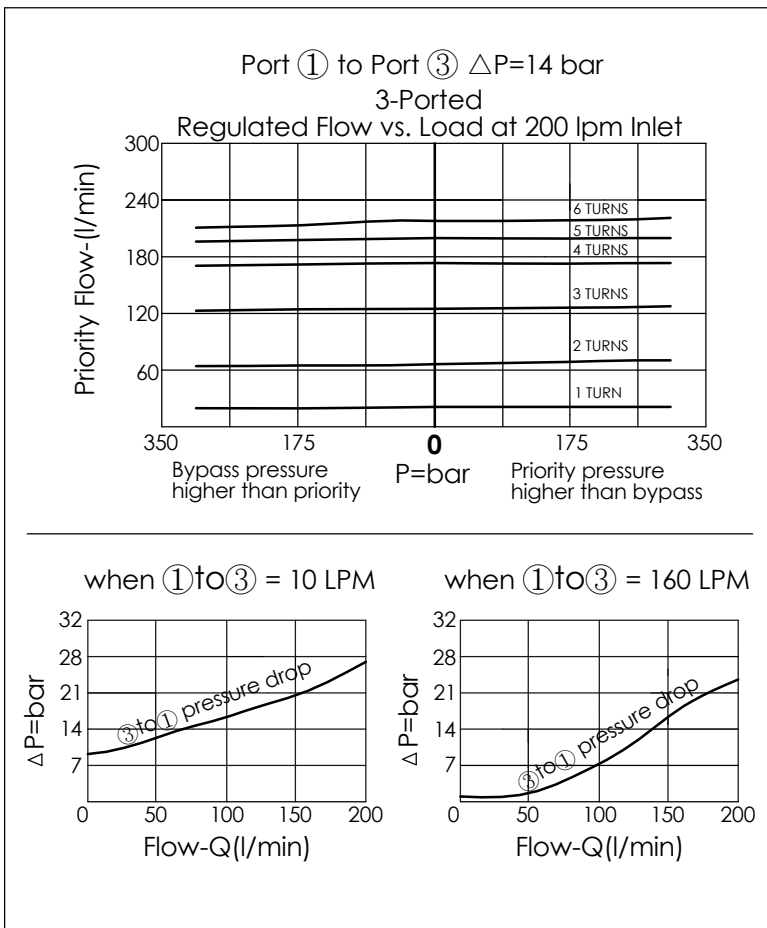
Control Option: Maximum extension from locating shoulder. (Z=L Control shown)

UNIT:mm

Illustrations / detail are for reference only. Data subject to change.



TECHNICAL DATA	
Max. pressure:	350 bar
Inlet flow at port ①:	200 LPM nominal 300 LPM max.
Priority Flow Ranges:	1 - 200 l/min
Cavity-Tooling:	19A-3 (19AB-3)
Installation torque:	200 - 215 Nm
Weight:	1.27 (Z=L) kg
<b>Note:</b> It can be used as a priority-type flow regulator or a restrictive-type 2-way flow regulator when the bypass port (port ②) is blocked.	



X	OPERATION	
3A	3 Port, Reverse Flow, Bypass/Restrictive	
Y	PRIORITY FLOW ADJUSTMENT RANGES	
2000	1 - 200 LPM	
Z	OPTIONS	
L	Leakproof hex. socket screw.	
K	Handknob with Lock Knob. (Order Code: 6ZAK001)	
T	Three-winged Handknob Kit.	