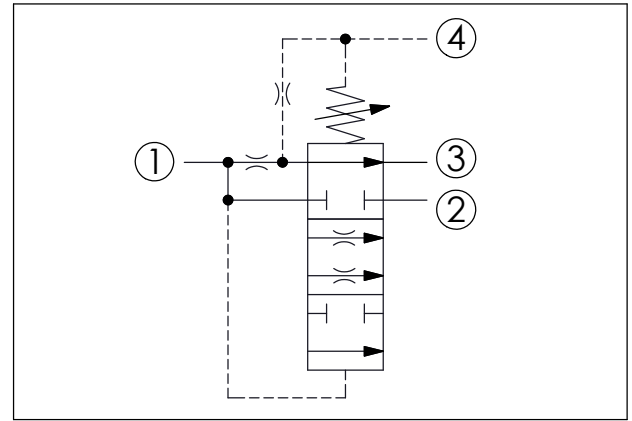
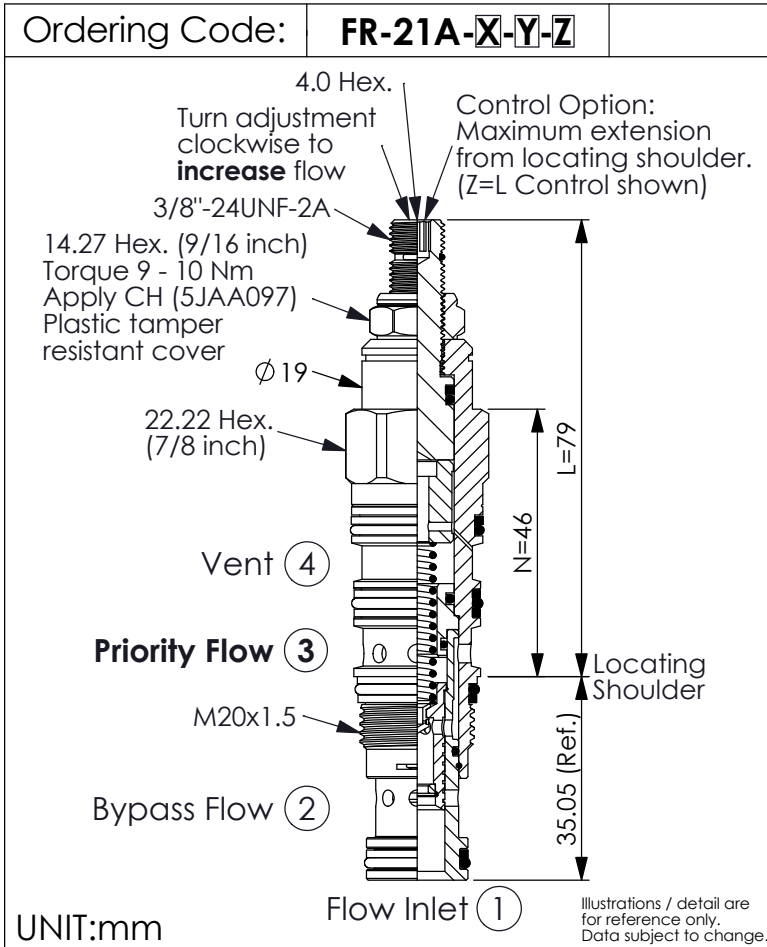
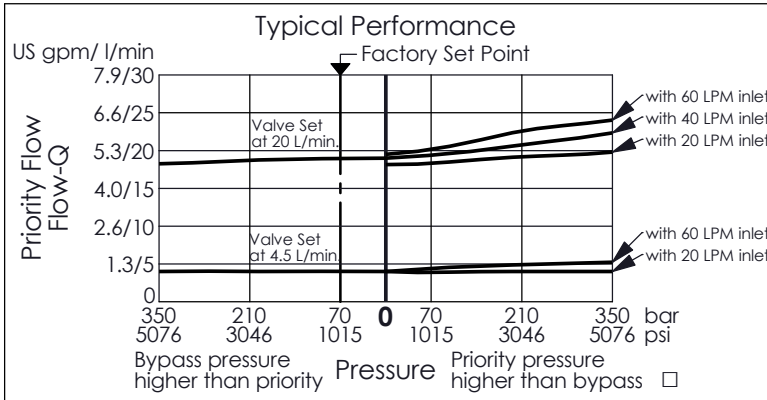


PRIORITY FLOW CONTROL VALVE (Vented, Fixed Orifice, Bypass/Restrictive, Pressure Compensated)



TECHNICAL DATA

Max. Operating pressure:	350 bar
Maximum Inlet Flow:	60 l/min
Priority Flow Ranges:	0.4 - 23 l/min
Nominal Vent Flow Approximately:	0.75 l/min
Cavity-Tooling:	21A-4
Installation torque:	40 - 50 Nm
Weight :	0.188 (Z=L) kg



- Pressure at the bypass port (port ②) may exceed pressure at the priority port (port ③).
- Both priority and bypass flow are usable up to the system operating pressure.
- Bypass flow is not available until priority flow requirements are satisfied.
- Blocking priority flow will also block bypass flow.
- If use pressure at vented port, then it can control the pressure at priority port.
- When pressure at bypass port exceeds the pressure control setting, the priority port shut off and all flows will go to the bypass port.
- Before priority port are satisfied by flow, the bypass shut off. Unless the vented port connects to tank.
- When the vented port connects to tank, all flows will go to the bypass port if inlet pressure over 10.5 bar.

Y	Priority Flow (Port ③) (customer must specify flow)
0004	Example: 0.4 LPM
0008	Example: 0.8 LPM
0010	Example: 1.0 LPM
0012	Example: 1.2 LPM
0035	Example: 3.5 LPM
0045	Example: 4.5 LPM
0080	Example: 8.0 LPM
0100	Example: 10.0 LPM
0120	Example: 12.0 LPM
0200	Example: 20.0 LPM

• Customer must specify a flow rating
• Factory set flow ratings are within ±10% of the requested setting
• If you need specific flow accuracy, please contact WINNER'S sales department

X	OPERATION
4F	Vented, Fixed orifice, bypass/restrictive, pressure compensated

• If a momentary impact pressure is needed in the application, please consult our sales department.

Z	OPTIONS
N	Non-adjustable (Factory set at customer specified flow)
L	Leakproof hex. socket screw. (Adjustment Ranges Approx. ±25%)
K	Handknob with Lock Konb. (Adjustment Ranges Approx. ±25%) (Order Code: 6ZAK001)