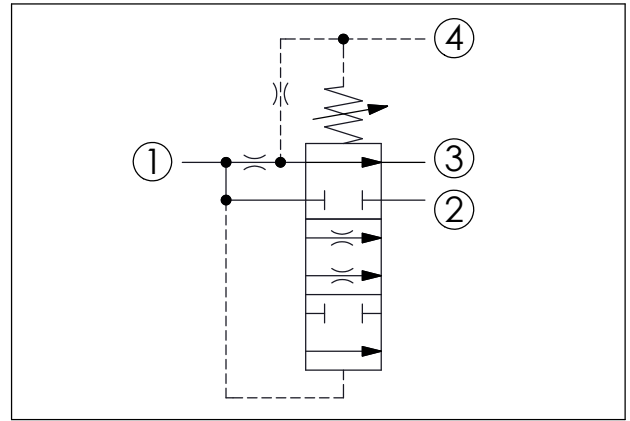
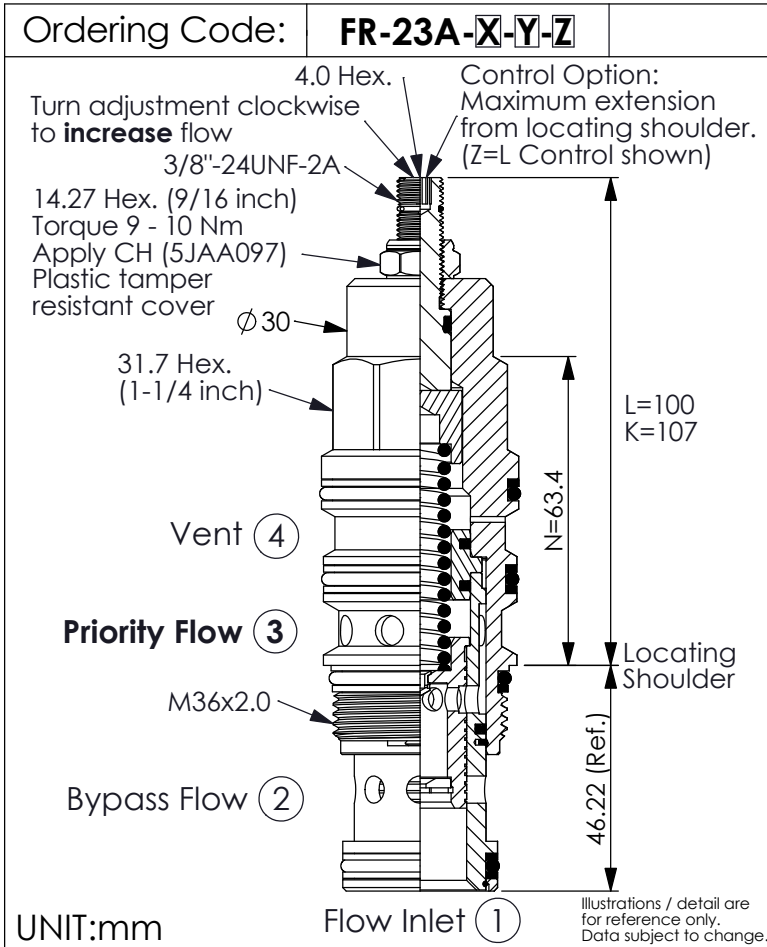


## PRIORITY FLOW CONTROL VALVE

(Vented, Fixed Orifice, Bypass/Restrictive, Pressure Compensated)



### TECHNICAL DATA

Max. Operating pressure: 350 bar

Maximum Inlet Flow: 240 l/min

Priority Flow Ranges: 0.8 - 95 l/min

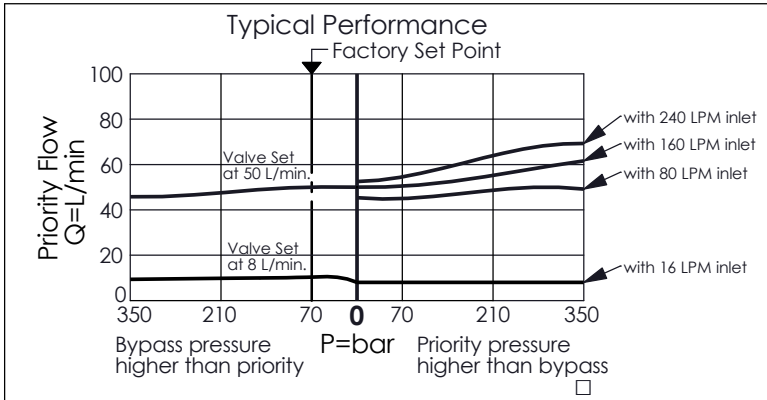
Nominal Vent Flow Approximately:  
0.75 l/min

Cavity-Tooling: 23A-4

Installation torque: 200 - 215 Nm

Weight : 0.681 (Z=L) kg

- Pressure at the bypass port (port ②) may exceed pressure at the priority port (port ③).
- Both priority and bypass flow are usable up to the system operating pressure.
- Bypass flow is not available until priority flow requirements are satisfied.
- Blocking priority flow will also block bypass flow.
- If use pressure at vented port, then it can control the pressure at priority port.
- When pressure at bypass port exceeds the pressure control setting, the priority port shut off and all flows will go to the bypass port.
- Before priority port are satisfied by flow, the bypass shut off. Unless the vented port connects to tank.
- When the vented port connects to tank, all flows will go to the bypass port if inlet pressure over 10.5 bar.



Y	Priority Flow (Port ③) (customer must specify flow)
0040	Example: 4.0 LPM
0070	Example: 7.0 LPM
0080	Example: 8.0 LPM
0140	Example: 14.0 LPM
0250	Example: 25.0 LPM
0300	Example: 30.0 LPM
0650	Example: 65.0 LPM
0750	Example: 75.0 LPM
0950	Example: 95.0 LPM

- Customer must specify a flow rating
- Factory set flow ratings are within  $\pm 10\%$  of the requested setting
- If you need specific flow accuracy, please contact WINNER'S sales department

X	OPERATION
4F	Vented, Fixed orifice, bypass/restrictive, pressure compensated

• If a momentary impact pressure is needed in the application, please consult our sales department.

Z	OPTIONS
N	Non-adjustable (Factory set at customer specified flow)
L	Leakproof hex. socket screw. (Adjustment Ranges Approx. $\pm 25\%$ )
K	Handknob with Lock Konb. (Adjustment Ranges Approx. $\pm 25\%$ ) (Order Code: 6ZAK001)