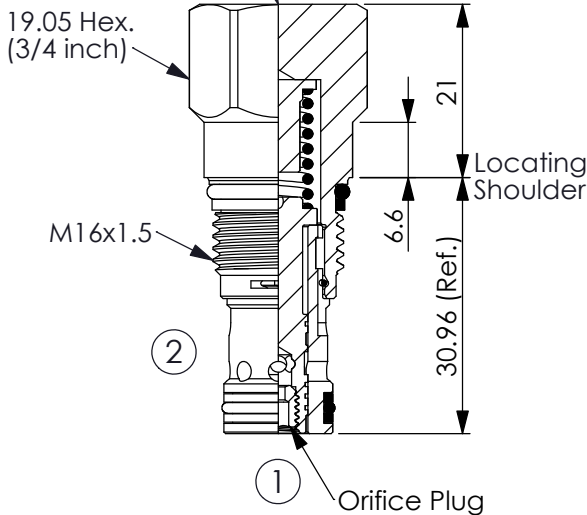


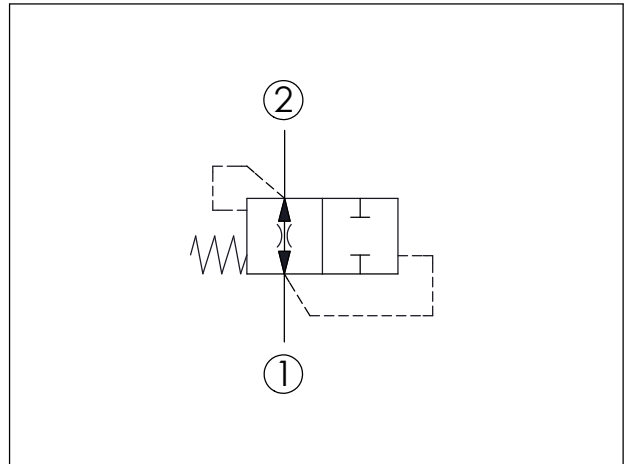
Ordering Code: **HB-162A-X-Y-Z**

Control Option:
Z=N Non-adjustable



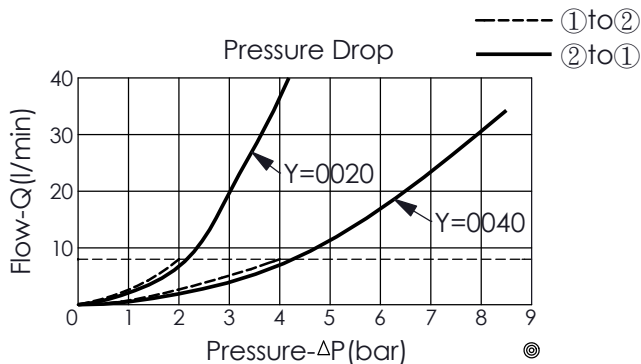
UNIT:mm

Illustrations / detail are for reference only. Data subject to change.



TECHNICAL DATA

Max. Operating pressure:	350	bar
Rated flow:	2 - 8.5	l/min
Cavity-Tooling:	162A-2	
Installation torque:	27 - 33	Nm
Weight:	0.07	kg



X OPERATION

20 Standard Type

- Maximum Leakage Approximately (15 cc/min./70 bar)
- The valve is designed to protect against hose break. When hose breaks, the flow from port ① to port ② increases. The valve closes when reaches the setting of the valve.

Y FLOW SETTING (Port ① to Port ②)

0020	2.0 LPM
0040	4.0 LPM

- Factory set flow ratings are within +/- 15% of the requested setting.
- The flow setting has to be at least 25% bigger than the maximum flow of customer's system, customer must specify the flow setting when ordering the valve, our recommendation is 1.5 times of normal using flow.

Z OPTIONS

N Non-adjustable

