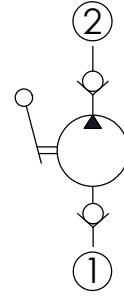
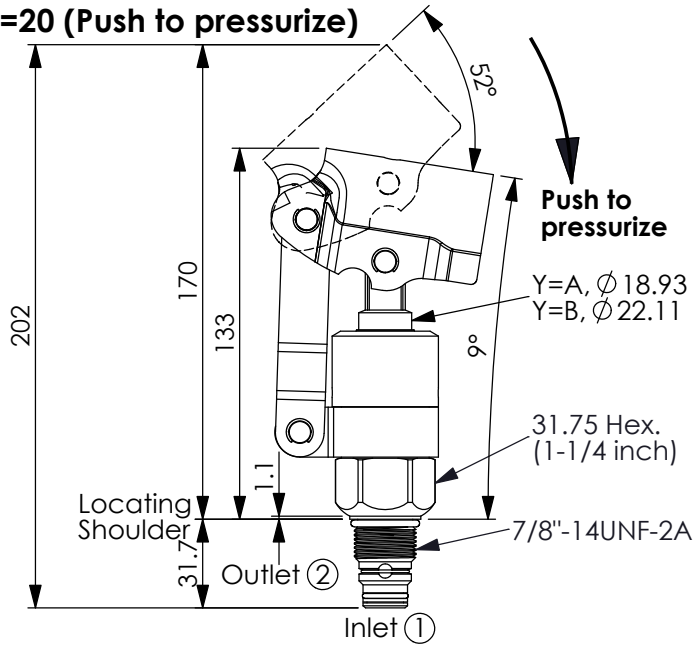


Ordering Code: **HP-10W-X-Y-Z**

X=20 (Push to pressurize)



TECHNICAL DATA

Max. Operating Pressure: 210 bar
(If you need higher max. operating pressure, please contact Winner's sales department.)

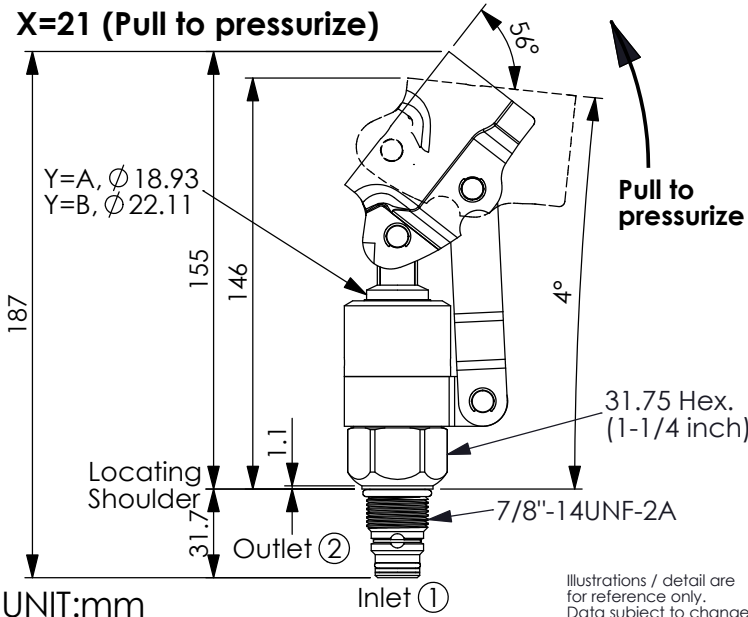
Cavity-Tooling: 10W-2

Installation torque: 35 - 45 Nm

Weight: 0.83 kg

Lever must be ordered separately.

X=21 (Pull to pressurize)

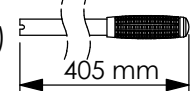


Handle kit order code no. :

7GYAG001

(Hollow stainless steel)

Handle kit length : 405 mm (Approx. 235 Nm)

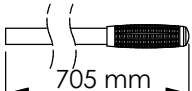


Handle kit order code no. :

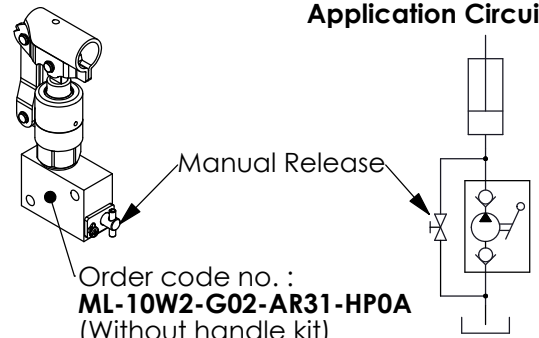
7GYAG006

(Hollow stainless steel)

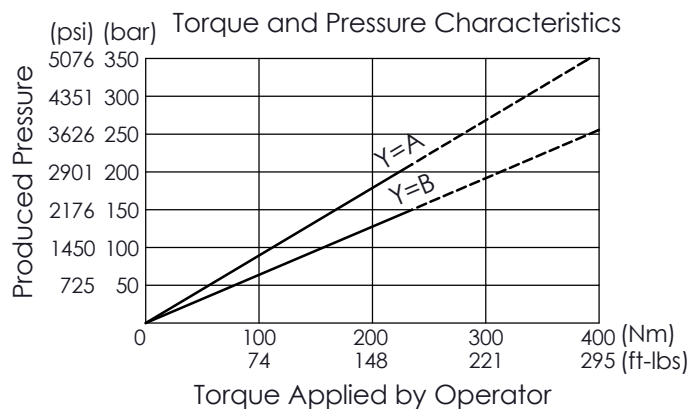
Handle kit length : 705 mm (Approx. 400 Nm)



Application Circuit



• Please refer to detailed instruction J.990.108.E HP Hand Pump Handle Kit.



Y DISPLACEMENT

A 7.4 c.c. per stroke

B 10.6 c.c. per stroke

X OPERATION

20 Push to pressurize

21 Pull to pressurize

Z OPTION

N Non-adjustable