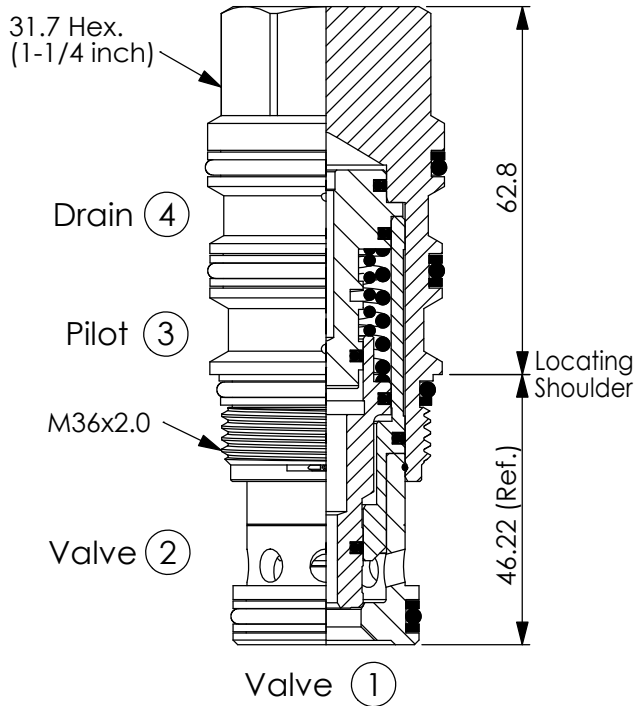
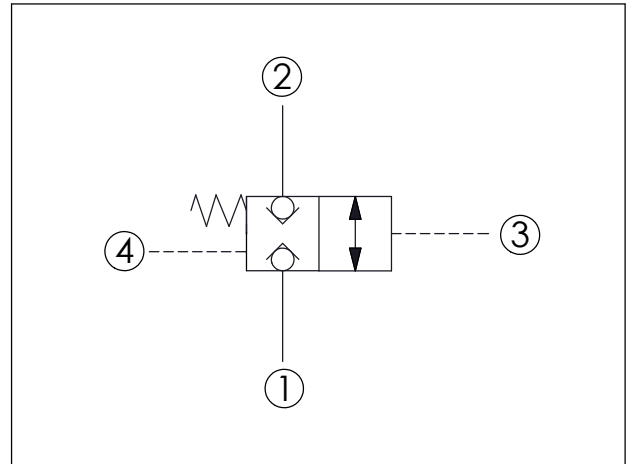


Ordering Code: **LB-23A-X-Y-Z**



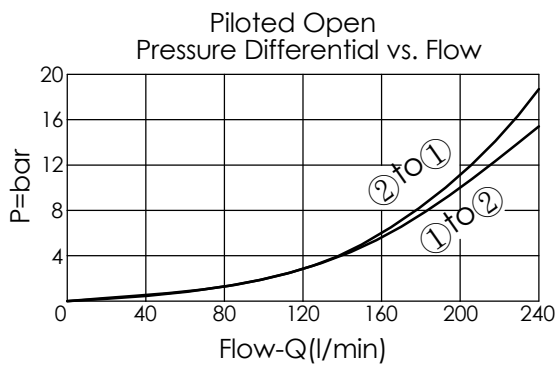
UNIT:mm

Illustrations / detail are for reference only. Data subject to change.



### TECHNICAL DATA

|                          |           |       |
|--------------------------|-----------|-------|
| Max. Operating pressure: | 350       | bar   |
| Rated flow:              | 240       | l/min |
| Cavity-Tooling:          | 23A-4     |       |
| Installation torque:     | 200 - 215 | Nm    |
| Weight:                  | 0.67      | kg    |



### X OPERATION

**4S** Pilot-to-open

- Maximum Leakage Approximately (0.7 cc/min./70 bar)
- All ports will accept 350 bar.

**Y**

### SPRINGS

Recommendation of Minimum Pilot Pressure Required to Shift Valve (Port ③)

**20**

20 bar

- We suggest that using above 20 bar pilot pressure at Port ③ when Port ① and Port ② are 350 bar. In order to ensure shifting quickly for every kinds of pressure and flow.
- If you have any question about using condition of shifting pressure and circuit, please feel free to consult with our sales dept.

**Z**

### OPTIONS

**N**

Shift Pressure Non-adjustable

**NP**

Shift Pressure Non-adjustable With stainless steel external metal components (Buna-N Seal)