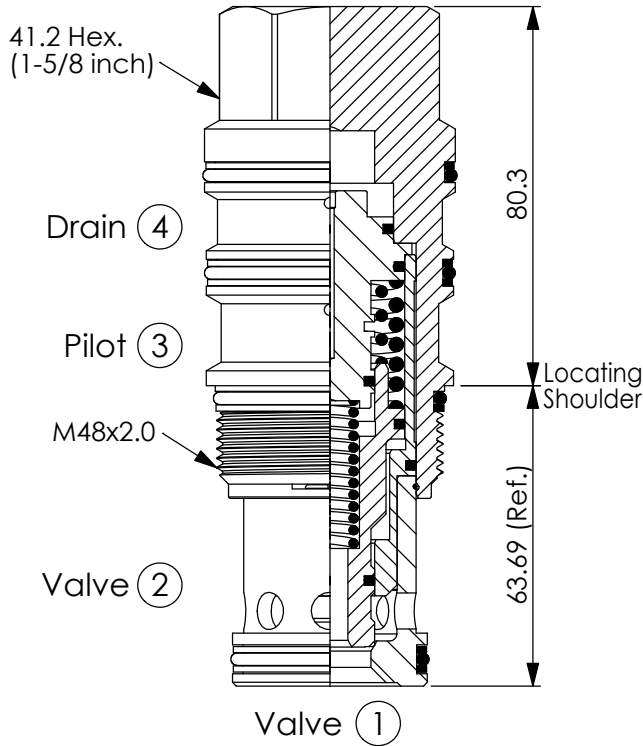
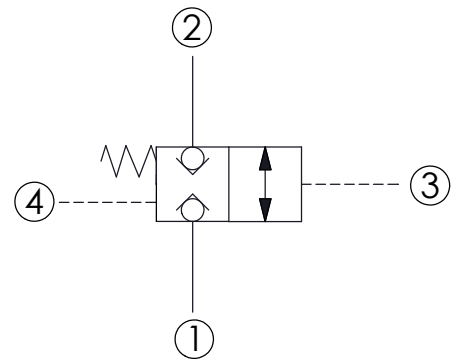


Ordering Code: **LB-24A-X-Y-Z**



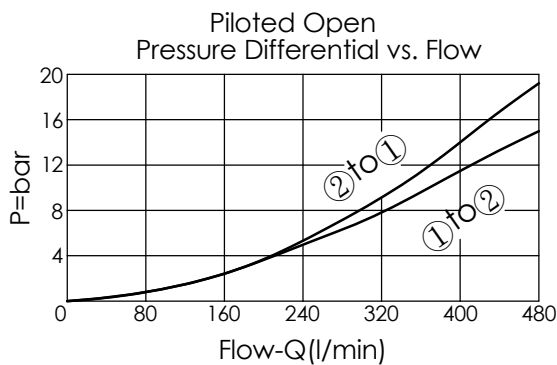
UNIT:mm

Illustrations / detail are for reference only. Data subject to change.



TECHNICAL DATA

Max. Operating pressure:	350	bar
Rated flow:	480	l/min
Cavity-Tooling:	24A-4 (24AB-4)	
Installation torque:	465 - 500	Nm
Weight:	1.51	kg



X OPERATION

4S Pilot-to-open

- Maximum Leakage Approximately (0.7 cc/min./70 bar)
- All ports will accept 350 bar.

Y

SPRINGS

Recommendation of Minimum Pilot Pressure Required to Shift Valve (Port ③)

20 20 bar

- We suggest that using above 20 bar pilot pressure at Port ③ when Port ① and Port ② are 350 bar. In order to ensure shifting quickly for every kinds of pressure and flow.
- If you have any question about using condition of shifting pressure and circuit, please feel free to consult with our sales dept.

Z OPTIONS

N Shift Pressure Non-adjustable

NP Shift Pressure Non-adjustable With stainless steel external metal components (Buna-N Seal)