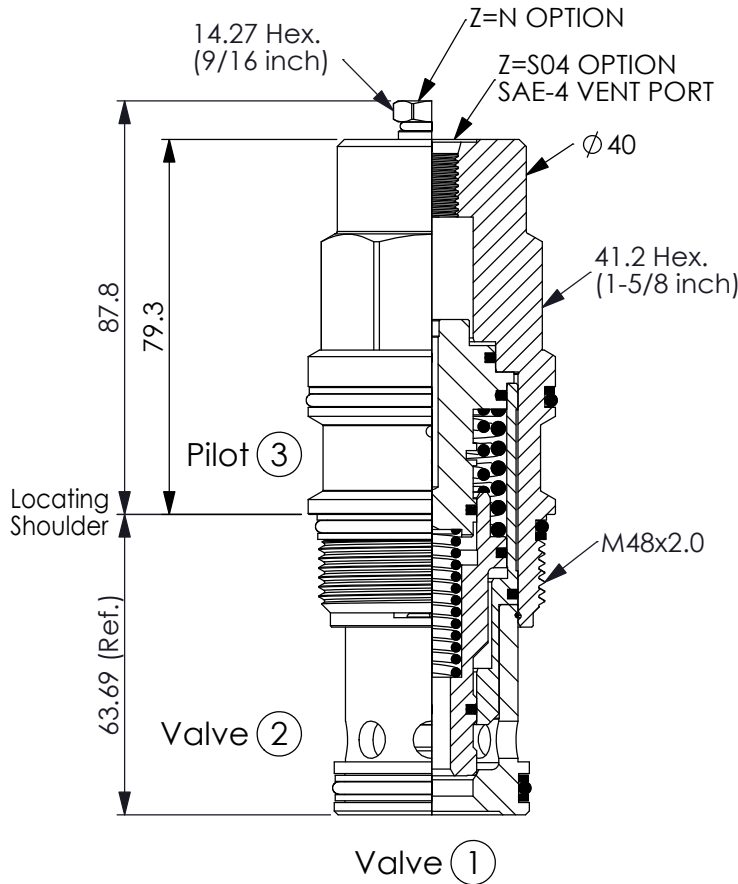
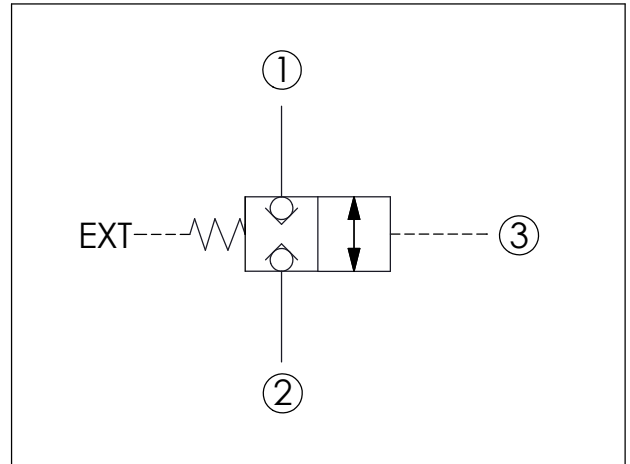


Ordering Code: **LB-19A-X-Y-Z**



UNIT:mm

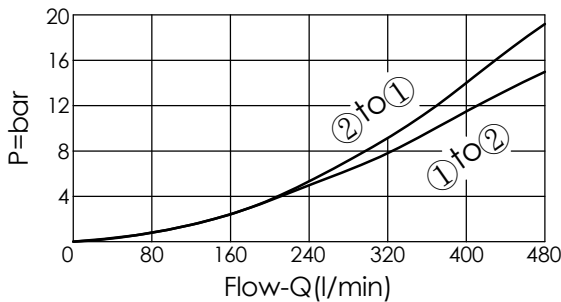
Illustrations / detail are for reference only. Data subject to change.



TECHNICAL DATA

Max. Operating pressure:	350 bar
Rated flow:	480 l/min
Cavity-Tooling:	19A-3 (19AB-3)
Installation torque:	465 - 500 Nm
Weight:	1.40 (Z=N) kg 1.39 (Z=S04)

Piloted Open Pressure Differential vs. Flow



X OPERATION

3S Pilot-to-open

- Maximum Leakage Approximately (0.7 cc/min./70 bar)
- All ports will accept 350 bar.
- Approximately 1 drop (0.07 cc) of fluid will pass from the pilot area to the vented spring chamber every 4000 cycles.

Y

SPRINGS

Recommendation of Minimum Pilot Pressure Required to Shift Valve (Port 3)

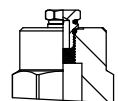
20 20 bar

- We suggest that using above 20 bar pilot pressure at Port 3 when Port 1 and Port 2 are 350 bar. In order to ensure shifting quickly for every kinds of pressure and flow.
- If you have any question about using condition of shifting pressure and circuit, please feel free to consult with our sales dept.

Z

OPTIONS

N Vented, Atmospherically Referenced



S04 External SAE-4 Port (7/16"-20UNF-2B)

