

Ordering Code: **LB-21A-X-Y-Z**

Control Option:
Maximum extension
from locating shoulder.
(Z=L Control shown)

4.0 Hex.

3/8"-24UNF-2A

14.27 Hex. (9/16 inch)
Torque 9 - 10 Nm
Apply CH (5JAA097)
Plastic tamper
resistant cover

Ø19

22.22 Hex.
(7/8 inch)

76

Drain (4)

Pilot (3)

M20x1.5

35.05 (Ref.)

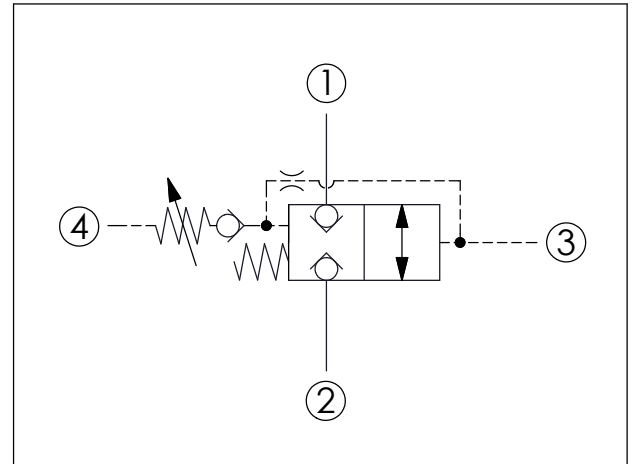
Valve (2)

Valve (1)

Locating
Shoulder

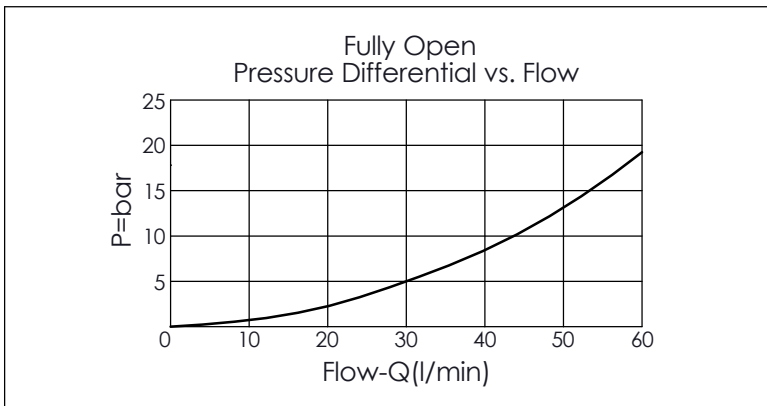
UNIT:mm

Illustrations / detail are
for reference only.
Data subject to change.


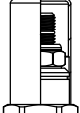
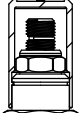


TECHNICAL DATA	
Max. Operating pressure:	350 bar
Rated flow:	60 l/min
Cavity-Tooling:	21A-4
Installation torque:	40 - 50 Nm
Weight:	0.193 (Z=L) kg

X	OPERATION
4P	Pressure adjustable
	<ul style="list-style-type: none"> Maximum Leakage Approximately (0.7 cc/min./350 bar) (Leakage rate between port ① and port ② is very low) All ports will accept 350 bar. When pilot pressure falls to setting approx. 85% of cracking value, the valve will return to the spring biased closed position.



Y	SHIFT PRESSURE ADJUSTMENT RANGE	
	Recommendation of Minimum Pilot Pressure Required to Shift Valve :28 bar (Port ③)	
A	28 - 210 bar (70 bar Standard Setting)	
B	28 - 105 bar (70 bar Standard Setting)	
W	28 - 315 bar (70 bar Standard Setting)	
C	28 - 420 bar (70 bar Standard Setting)	
D	28 - 55 bar (28 bar Standard Setting)	

Z	OPTIONS
L	Leakproof hex. socket screw. 
C	Stainless Steel Tamper Resistant Cover. 
CB	Plastic Tamper Resistant Cover (Order Code:5JAA093) 
K	Handknob with Lock Knob. (Order Code: 6ZAK001) 