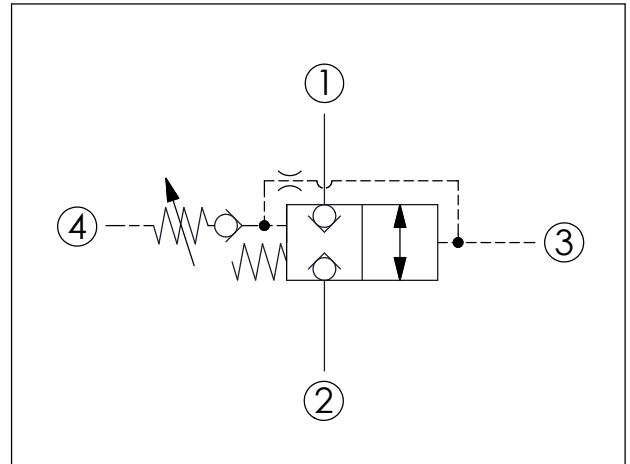
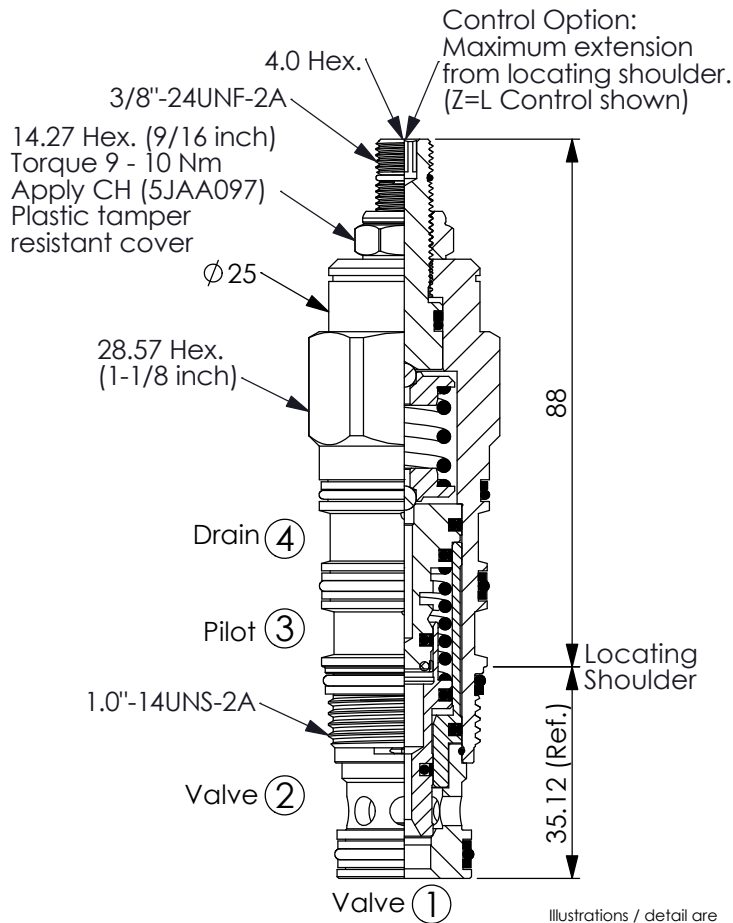


Ordering Code: **LB-22A-X-Y-Z**



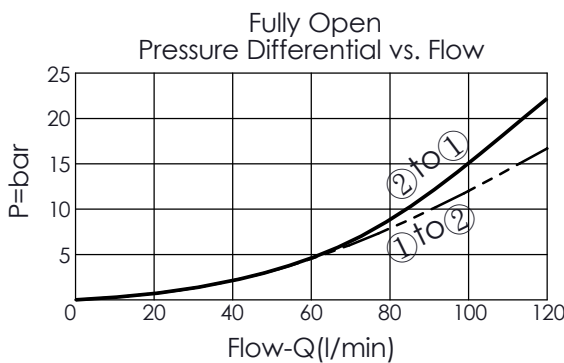
TECHNICAL DATA

Max. Operating pressure:	350	bar
Rated flow:	120	l/min
Cavity-Tooling:	22A-4	
Installation torque:	60 - 70	Nm
Weight:	0.345 (Z=L)	kg

X OPERATION

4P Pressure adjustable

- Maximum Leakage Approximately (0.7 cc/min./350 bar)
(Leakage rate between port ① and port ② is very low)
- All ports will accept 350 bar.
- When pilot pressure falls to setting approx. 85% of cracking value, the valve will return to the spring biased closed position.



Z OPTIONS

L	Leakproof hex. socket screw.	
C	Stainless Steel Tamper Resistant Cover.	
CB	Plastic Tamper Resistant Cover (Order Code:5JAA098)	
K	Handknob with Lock Knob. (Order Code: 6ZAK001)	

Y SHIFT PRESSURE ADJUSTMENT RANGE

Recommendation of Minimum Pilot Pressure Required to Shift Valve :20 bar(Port ③)

A	18 - 210 bar (70 bar Standard Setting)
B	18 - 105 bar (70 bar Standard Setting)
W	18 - 315 bar (70 bar Standard Setting)