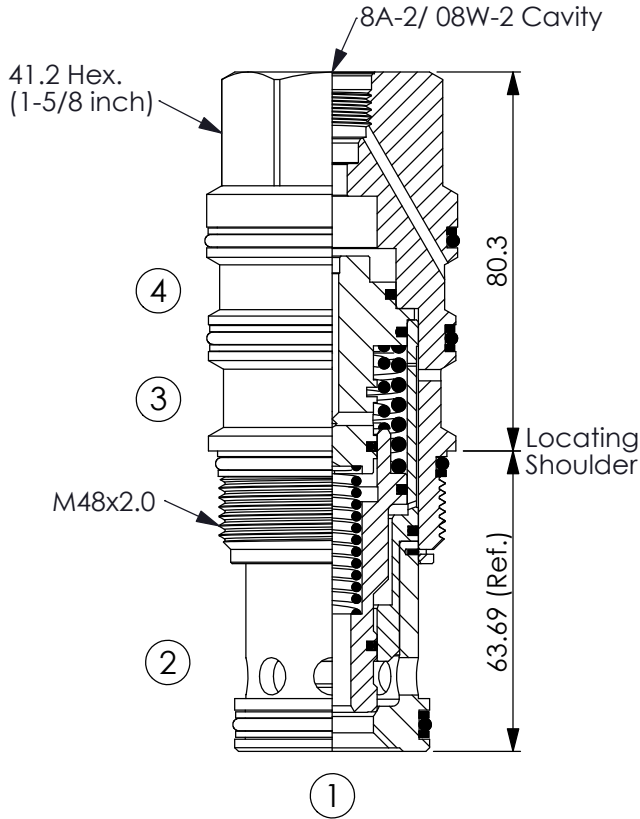
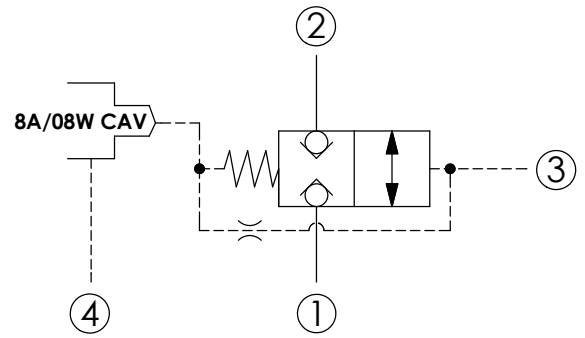


Ordering Code: **LB-24A-X-Y-Z**



UNIT:mm

Illustrations / detail are for reference only. Data subject to change.



TECHNICAL DATA

Max. Operating pressure:	350 bar
Rated flow:	480 l/min
Cavity-Tooling:	24A-4 (24AB-4)
Installation torque:	465 - 500 Nm
Weight:	1.49 kg

X OPERATION

4R Vent-to-open

- Maximum Leakage Approximately (0.7 cc/min./70 bar)
- All ports will accept 350 bar.

Y SPRINGS

Recommendation of Minimum Pilot Pressure Required to Shift Valve (Port ③)

H 20 bar

- We suggest that using above 30 bar pilot pressure at Port ③ when Port ① and Port ② are 350 bar. In order to ensure shifting quickly for every kinds of pressure and flow.
- If you have any question about using condition of shifting pressure and circuit, please feel free to consult with our sales dept.

Z OPTIONS (PILOT CONTROL VALVE)

8 8A-2 Cavity

8W 08W-2 Cavity

