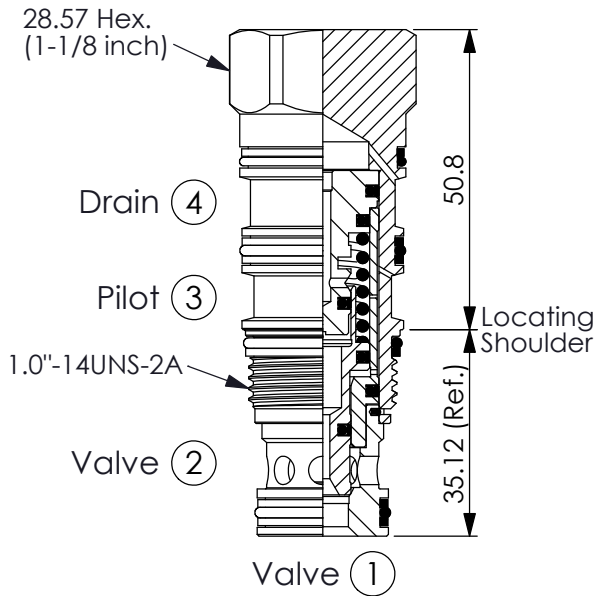


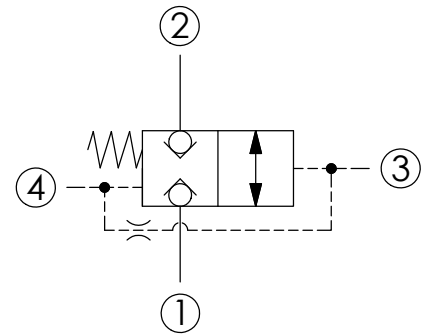
LOGIC ELEMENT VALVE (Normally Closed, Balanced Poppet, Logic Element, Vent-to-Open)

Ordering Code: **LB-22A-X-Y-Z**



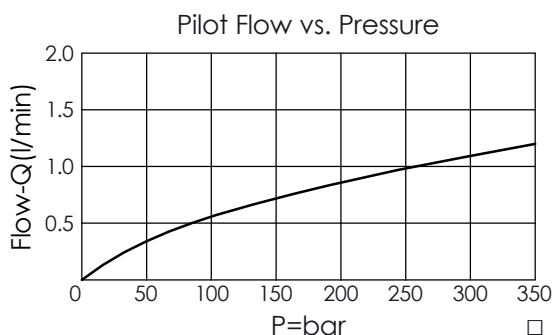
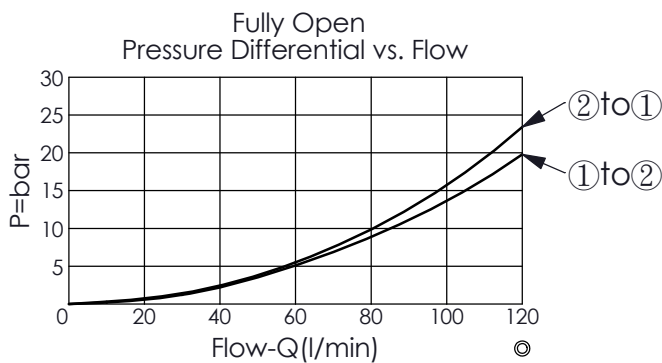
UNIT:mm

Illustrations / detail are for reference only. Data subject to change.



TECHNICAL DATA

Max. Operating pressure:	350	bar
Rated flow:	120	l/min
Cavity-Tooling:	22A-4	
Installation torque:	60 - 70	Nm
Weight:	0.279	kg



X OPERATION

4R Vent-to-open

- Maximum Leakage Approximately (0.7 cc/min./350 bar)
- All ports will accept 350 bar.

Y SPRINGS

Y Recommendation of Minimum Pilot Pressure Required to Shift Valve (Port ③)

20 20 bar

- We suggest that using above 30 bar pilot pressure at Port ③ when Port ① and Port ② are 350 bar. In order to ensure shifting quickly for every kinds of pressure and flow.
- If you have any question about using condition of shifting pressure and circuit, please feel free to consult with our sales dept.

Z OPTIONS

N Shift Pressure Non-adjustable