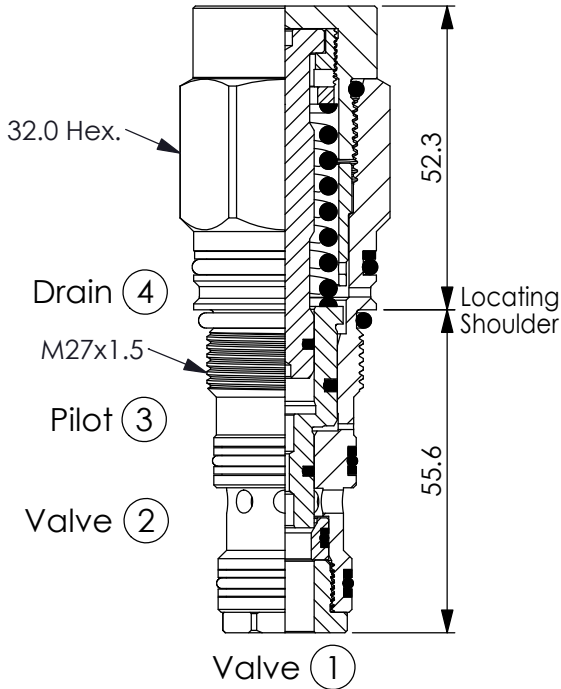


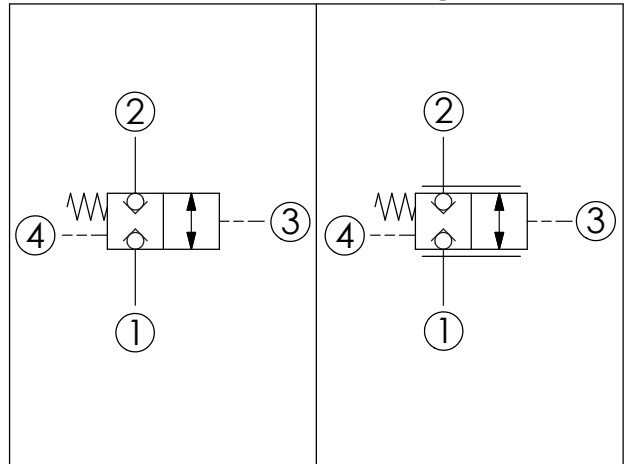
## LOGIC ELEMENT VALVE (Pilot-to-Open, Normally Closed, Balanced Poppet, Logic Element)

Ordering Code: **LB-27MA-X-Y-Z**



UNIT:mm

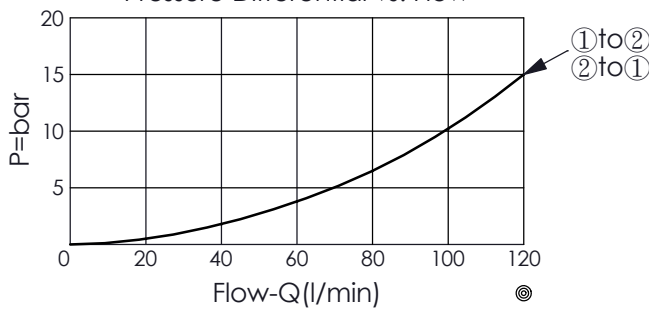
Illustrations / detail are for reference only. Data subject to change.



### TECHNICAL DATA

Max. Operating pressure:	350	bar
Rated flow:	90	l/min
Cavity-Tooling:	27MA-4	
Installation torque:	50 - 60	Nm
Weight:	0.426	kg

Piloted Open Pressure Differential vs. Flow



### X OPERATION

**4S** Pilot-to-open

- Maximum Leakage Approximately ( 5 drops/min. )
- All ports will accept 350 bar.

### Y SPRINGS

**Y** Recommendation of Minimum Pilot Pressure Required to Shift Valve (Port ③)

**15** 15 bar

- We suggest that using above 15 bar pilot pressure at Port ③ when Port ① and Port ② are 350 bar. In order to ensure shifting quickly for every kinds of pressure and flow.
- If you have any question about using condition of shifting pressure and circuit, please feel free to consult with our sales dept.

### Z OPTIONS

**N** Shift Pressure Non-adjustable