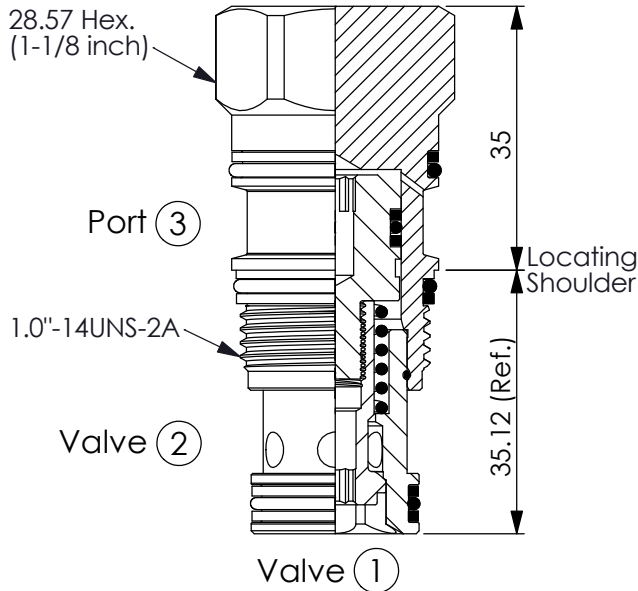
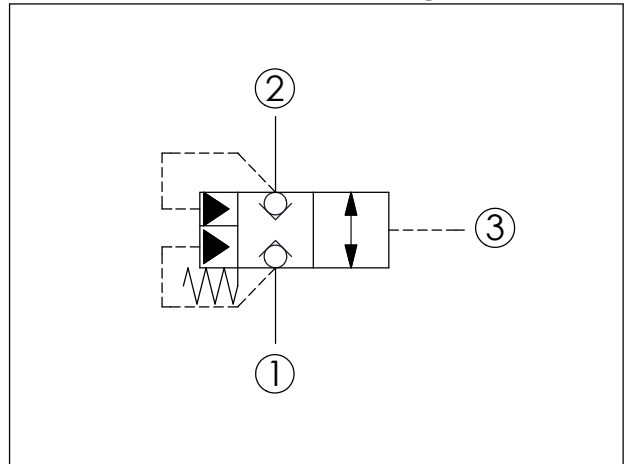


Ordering Code: **LC-2A-X-Y-Z**



UNIT:mm

Illustrations / detail are for reference only. Data subject to change.



TECHNICAL DATA

Max. Operating pressure: 350 bar

Rated flow: 120 l/min

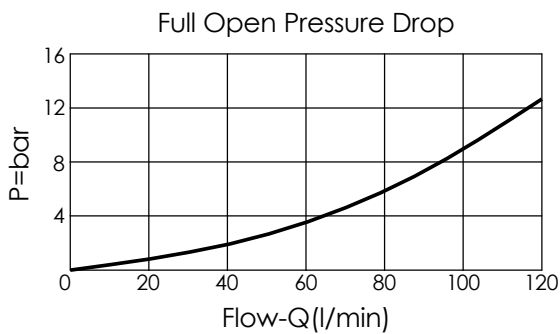
Cavity-Tooling: 2A-3

Installation torque: 60 - 70 Nm

Weight: 0.23 kg

Area ratio:A3 to A1 = 1.8:1

Area ratio:A3 to A2 = 2.25:1



X OPERATION

3C Port ③ pilot source

- Maximum Leakage Approximately (0.7 cc/min./70 bar)
- All ports will accept 350 bar.

Y

SPRINGS

Cracking pressure

35

3.5 bar at port ③

Z

OPTIONS

N

Non-adjustable