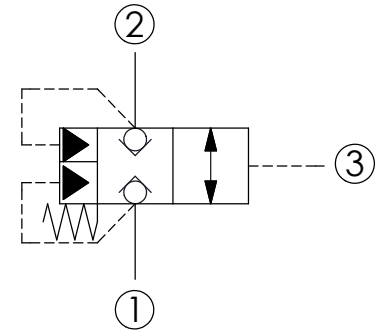
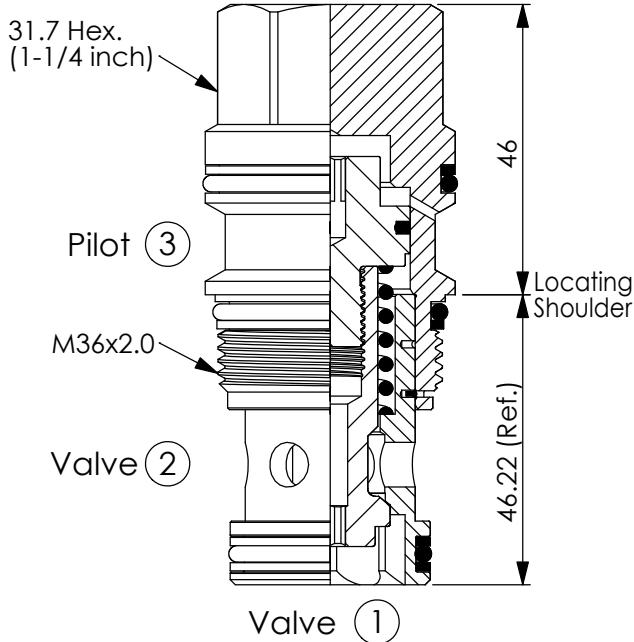


Ordering Code: **LC-17A-X-Y-Z**

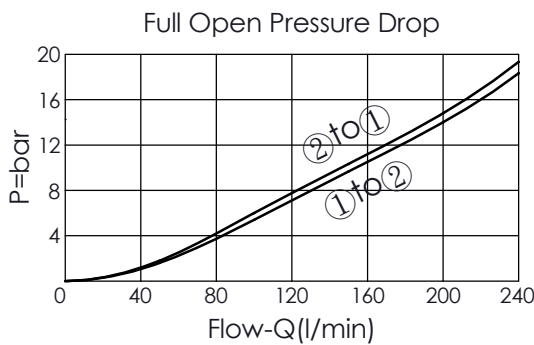


TECHNICAL DATA

Max. Operating pressure:	350	bar
Rated flow:	240	l/min
Cavity-Tooling:	17A-3	
Installation torque:	200 - 215	Nm
Weight:	0.52	kg
Area ratio:A3 to A1 =	1.8:1	
Area ratio:A3 to A2 =	2.25:1	

UNIT:mm

Illustrations / detail are for reference only. Data subject to change.



X OPERATION

3C Port ③ pilot source

- Maximum Leakage Approximately (0.7 cc/min./70 bar)
- All ports will accept 350 bar.

Y

SPRINGS

Cracking pressure

35

3.5 bar at port ③

Z

OPTIONS

N

Non-adjustable