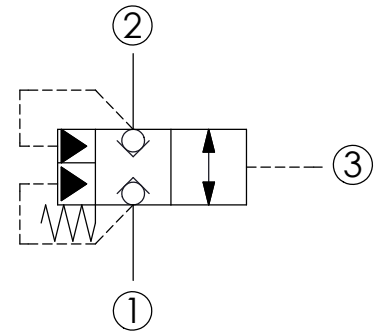
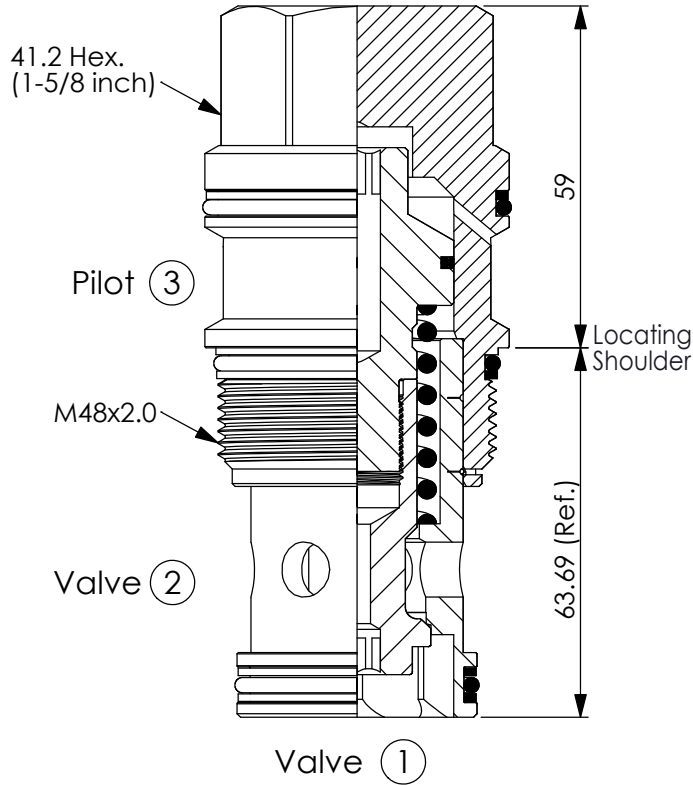


Ordering Code: **LC-19A-X-Y-Z**



### TECHNICAL DATA

Max. Operating pressure: 350 bar

Rated flow: 480 l/min

Cavity-Tooling: 19A-3 (19AB-3)

Installation torque: 465 - 500 Nm

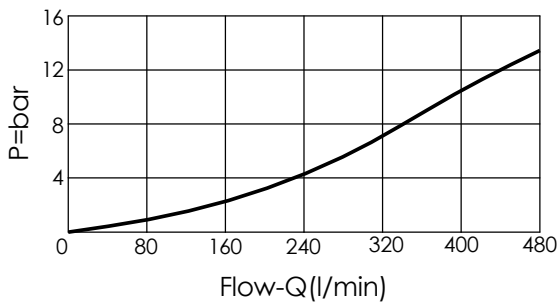
Weight: 1.20 kg

Area ratio:A3 to A1 = 1.8:1  
Area ratio:A3 to A2 = 2.25:1

UNIT:mm

Illustrations / detail are for reference only. Data subject to change.

Full Open Pressure Drop



**X**

### OPERATION

**3C**

Port ③ pilot source

- Maximum Leakage Approximately (0.7 cc/min./70 bar)
- All ports will accept 350 bar.

**Y**

### SPRINGS

Cracking pressure

**35**

3.5 bar at port ③

**Z**

### OPTIONS

**N**

Non-adjustable