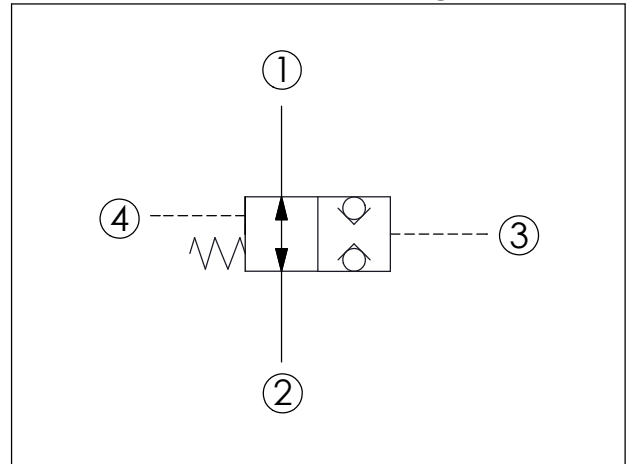


## LOGIC ELEMENT VALVE (Pilot-to-closed, Normally open, balanced poppet, logic element)

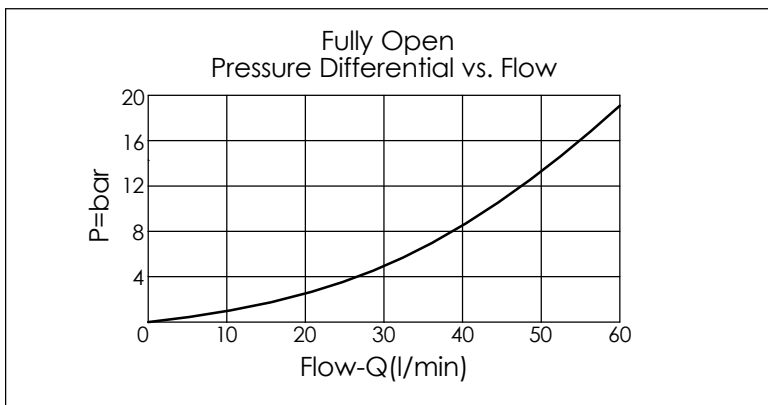
Ordering Code: **LN-21A-X-Y-Z**

UNIT:mm

Illustrations / detail are for reference only. Data subject to change.



TECHNICAL DATA		
Max. Operating pressure:	350 bar	
Rated flow:	60	l/min
Cavity-Tooling:	21A-4	
Installation torque:	40 - 50	Nm
Weight:	0.16	kg



X	OPERATION	
4S	Pilot-to-closed	
<ul style="list-style-type: none"> <li>Maximum Leakage Approximately (0.7 cc/min./350 bar)</li> <li>All ports will accept 350 bar.</li> </ul>		

Y	SPRINGS	
	Recommendation of Minimum Pilot Pressure Required to Shift Valve (Port ③)	
28	28.0 bar	
<ul style="list-style-type: none"> <li>We suggest that using above 28 bar pilot pressure at Port ③ when Port ① and Port ② are 350 bar. In order to ensure shifting quickly for every kinds of pressure and flow.</li> </ul>		
23	23.0 bar	
<ul style="list-style-type: none"> <li>We suggest that using above 23 bar pilot pressure at Port ③ when Port ① and Port ② are 350 bar. In order to ensure shifting quickly for every kinds of pressure and flow.</li> <li>If you have any question about using condition of shifting pressure and circuit, please feel free to consult with our sales dept.</li> </ul>		

Z	OPTIONS	
N	Non-adjustable	
NP	Non-adjustable With stainless steel external metal components (Buna-N Seal)	