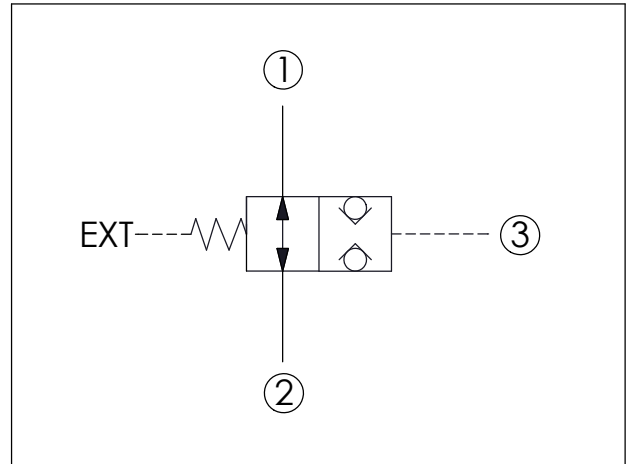
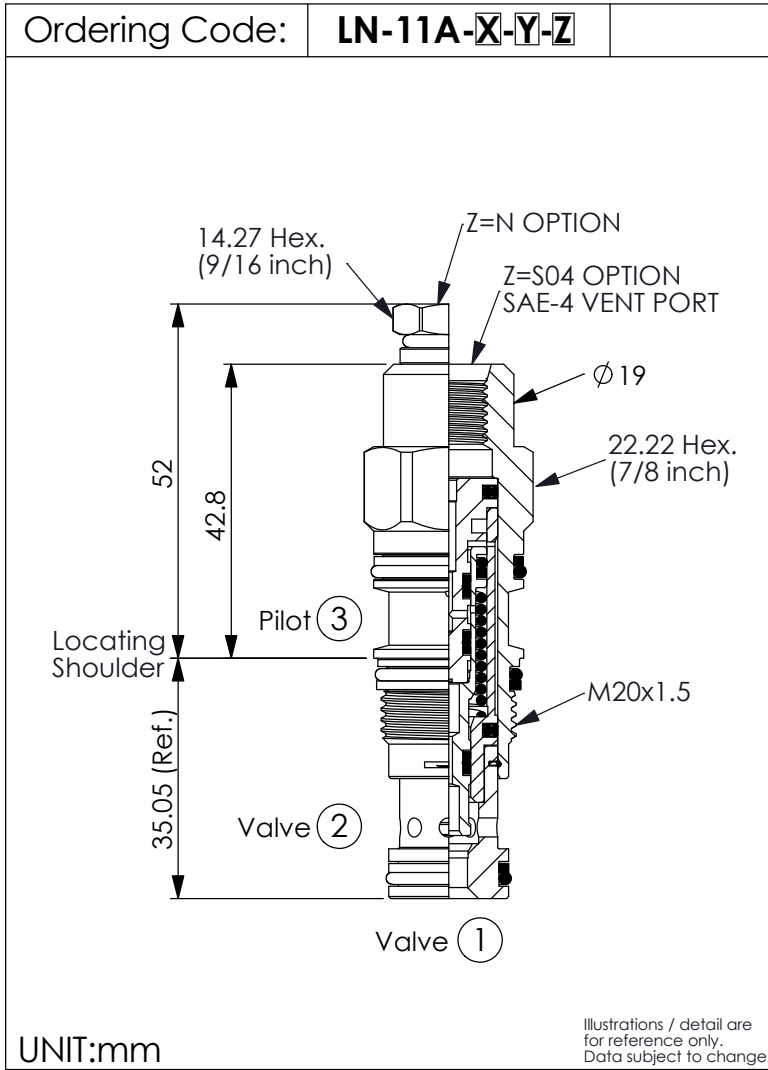
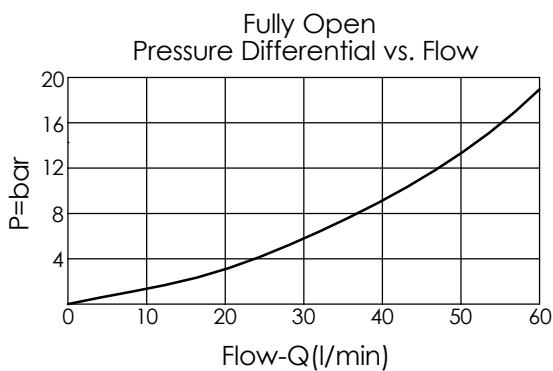


(Pilot-to-closed, Normally open, balanced poppet, logic element)



TECHNICAL DATA

Max. Operating pressure:	350	bar
Rated flow:	60	l/min
Cavity-Tooling:	11A-3	
Installation torque:	40 - 50	Nm
Weight:	0.15	kg



X OPERATION

3S Pilot-to-closed

- Maximum Leakage Approximately (0.7 cc/min.)
- All ports will accept 350 bar.
- Approximately 1 drop (0.07 cc) of fluid will pass from the pilot area to the vented spring chamber every 4000 cycles.

Y SPRINGS


Recommendation of Minimum Pilot Pressure Required to Shift Valve (Port ③)

28 28.0 bar

- We suggest that using above 28 bar pilot pressure at Port ③ when Port ① and Port ② are 350 bar. In order to ensure shifting quickly for every kinds of pressure and flow.

Z OPTIONS

N Vented, Atmospherically Referenced 

NP Vented, Atmospherically Referenced With stainless steel external metal components (Buna-N Seal) 

S04 External SAE-4 Port (7/16"-20UNF-2B) 