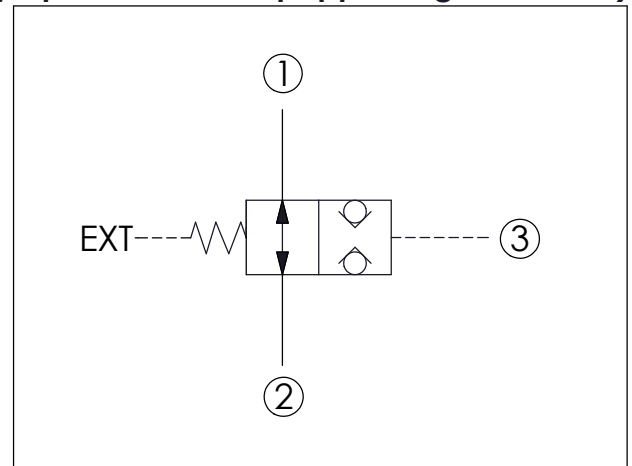
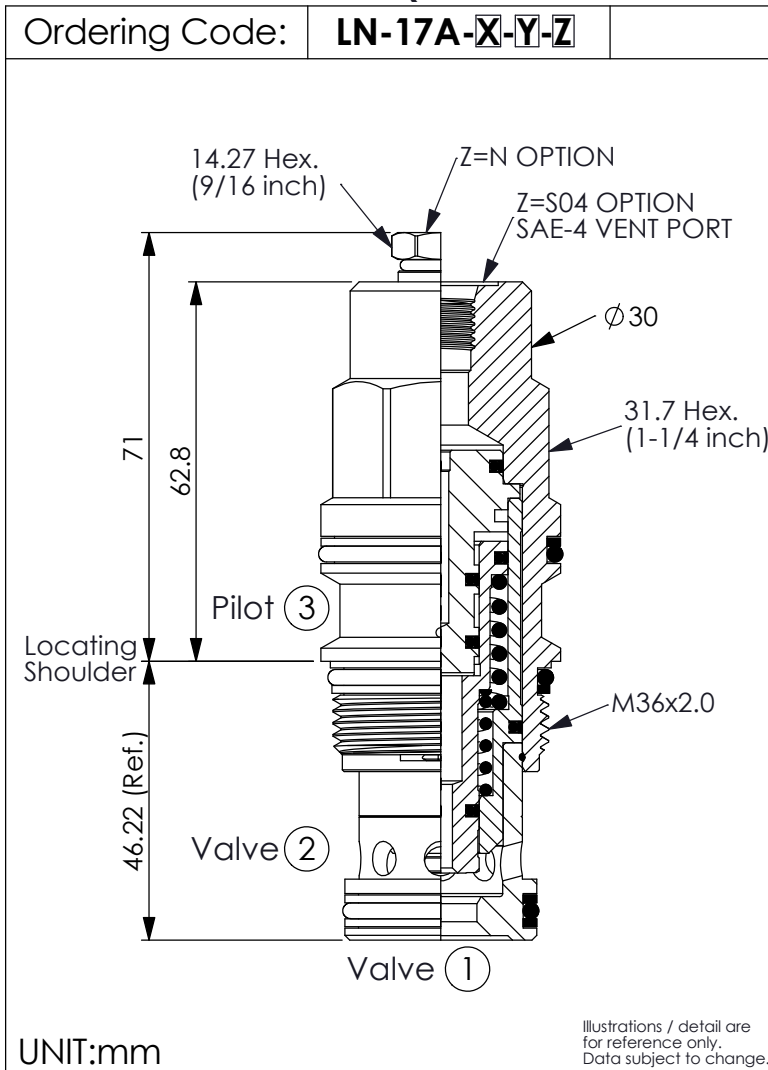
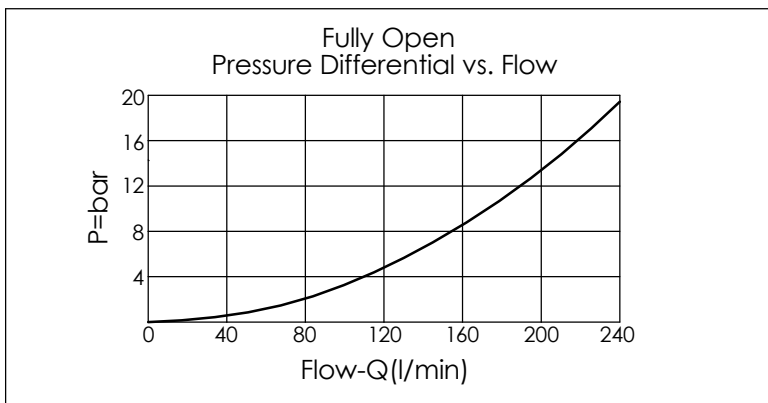


(Pilot-to-closed, Normally open, balanced poppet, logic element)



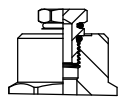
TECHNICAL DATA

Max. Operating pressure:	350	bar
Rated flow:	240	l/min
Cavity-Tooling:	17A-3	
Installation torque:	200 - 215	Nm
Weight:	0.60	kg



X	OPERATION
3S	Pilot-to-closed
	<ul style="list-style-type: none"> Maximum Leakage Approximately (0.7 cc/min.) All ports will accept 350 bar. Approximately 1 drop (0.07 cc) of fluid will pass from the pilot area to the vented spring chamber every 4000 cycles.

Y	SPRINGS
	Recommendation of Minimum Pilot Pressure Required to Shift Valve (Port ③)
20	20.0 bar
	<ul style="list-style-type: none"> We suggest that using above 20 bar pilot pressure at Port ③ when Port ① and Port ② are 350 bar. In order to ensure shifting quickly for every kinds of pressure and flow.

Z	OPTIONS
N	Vented, Atmospherically Referenced 
S04	External SAE-4 Port (7/16"-20UNF-2B) 