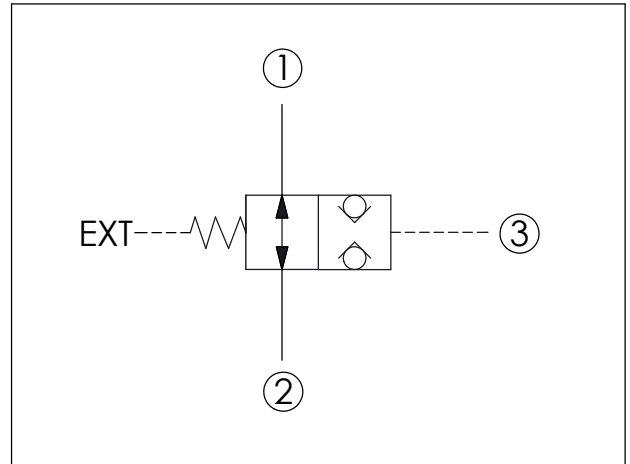
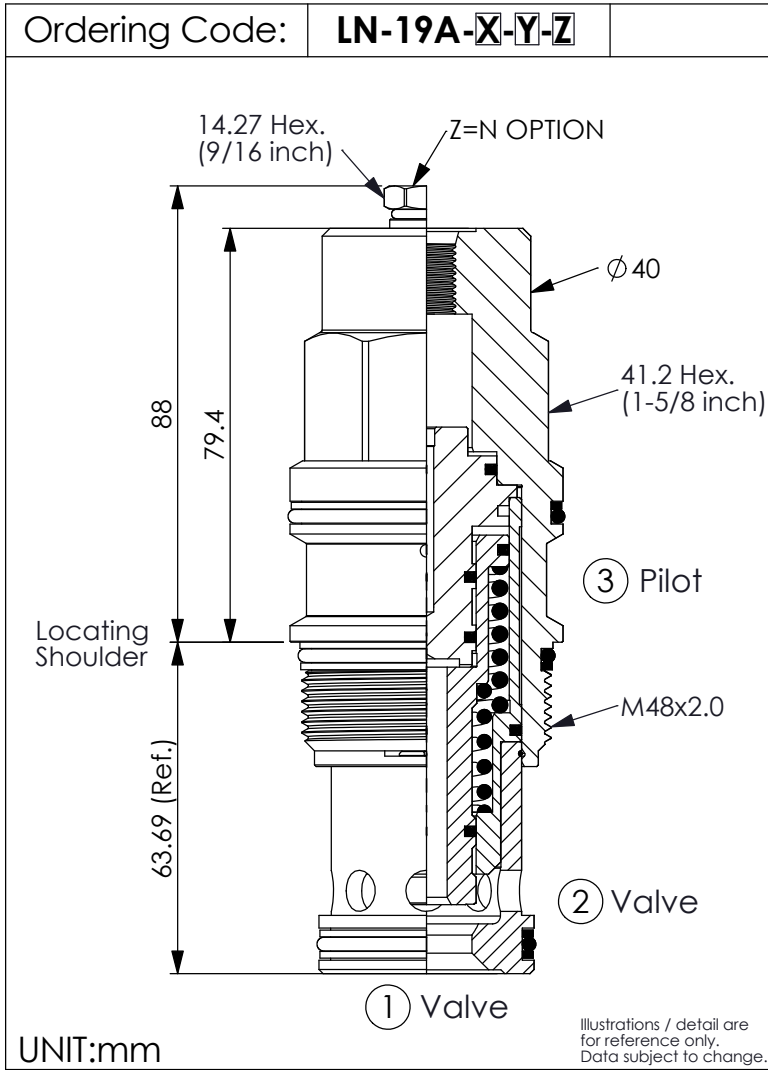
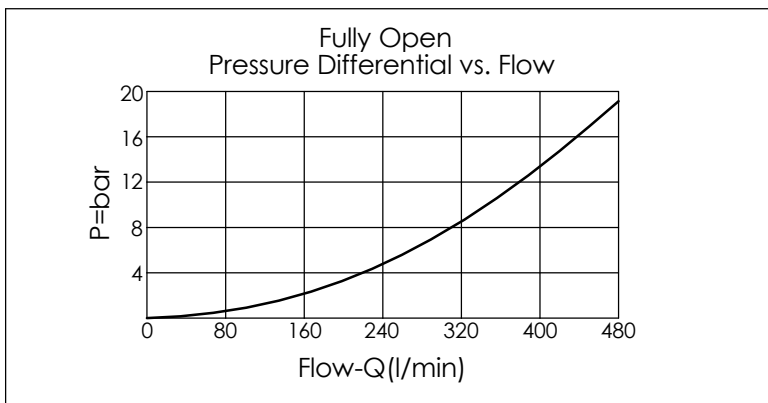


(Pilot-to-closed, Normally open, balanced poppet, logic element)



TECHNICAL DATA

| | | |
|--------------------------|----------------|-------|
| Max. Operating pressure: | 350 | bar |
| Rated flow: | 480 | l/min |
| Cavity-Tooling: | 19A-3 (19AB-3) | |
| Installation torque: | 465 - 500 | Nm |
| Weight: | 1.38 | kg |



| | |
|-----------|--|
| X | OPERATION |
| 3S | Pilot-to-closed |
| | <ul style="list-style-type: none"> Maximum Leakage Approximately (0.7 cc/min.) All ports will accept 350 bar. Approximately 1 drop (0.07 cc) of fluid will pass from the pilot area to the vented spring chamber every 4000 cycles. |

| | |
|--|---|
| Y | SPRINGS |
| | Recommendation of Minimum Pilot Pressure Required to Shift Valve (Port ③) |
| 20 | 20.0 bar |
| <p>We suggest that using above 20 bar pilot pressure at Port ③ when Port ① and Port ② are 350 bar. In order to ensure shifting quickly for every kinds of pressure and flow.</p> | |

| | |
|------------|--------------------------------------|
| Z | OPTIONS |
| N | Vented, Atmospherically Referenced |
| S04 | External SAE-4 Port (7/16"-20UNF-2B) |