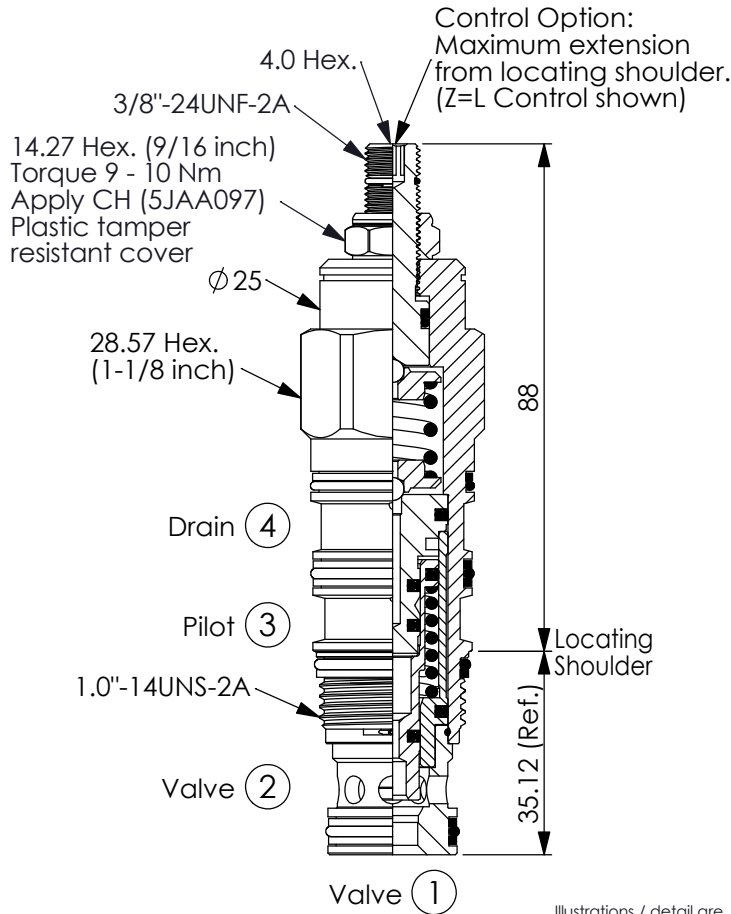


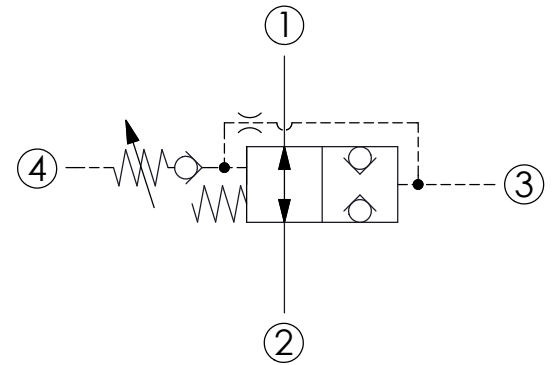
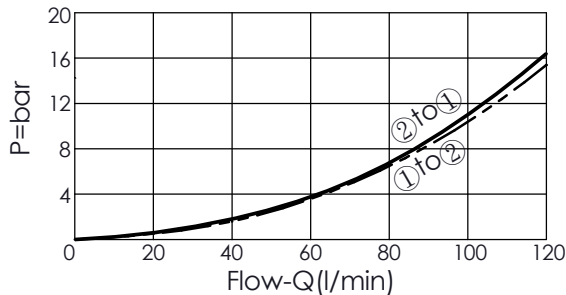
Ordering Code: **LN-22A-X-Y-Z**



UNIT:mm

Illustrations / detail are
for reference only.
Data subject to change.

Fully Open
Pressure Differential vs. Flow



TECHNICAL DATA

Max. Operating pressure:	350 bar
Rated flow:	120 l/min
Cavity-Tooling:	22A-4
Installation torque:	60 - 70 Nm
Weight:	0.35 (Z=L) kg

X OPERATION

4P Pressure adjustable

- Maximum Leakage Approximately (0.7 cc/min./350 bar)
(Leakage rate between port ① and port ② is very low)
- All ports will accept 350 bar.
- When pilot pressure falls to approx. 85% of cracking value, the valve will return to the spring biased open position.

Z OPTIONS

L	Leakproof hex. socket screw.	
C	Stainless Steel Tamper Resistant Cover.	
CB	Plastic Tamper Resistant Cover (Order Code:5JAA098)	
K	Handknob with Lock Knob. (Order Code: 6ZAK001)	

Y PRESSURE ADJUSTMENT RANGE

Recommendation of Minimum Pilot Pressure Required to Shift Valve :20 bar(Port ③)

A	14 - 210 bar (70 bar Standard Setting)
B	14 - 105 bar (70 bar Standard Setting)
W	14 - 315 bar (70 bar Standard Setting)