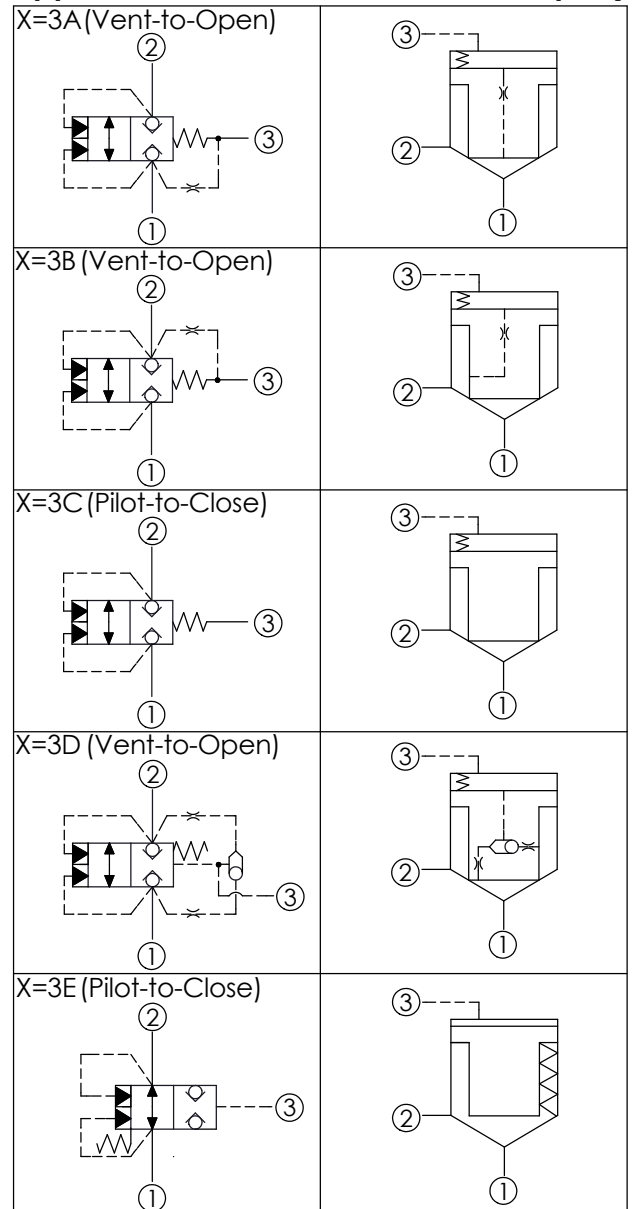


X	OPERATION
<b>3A</b>	Spring biased closed pilot source from Port ①
<b>3B</b>	Spring biased closed pilot source from Port ②
<b>3C</b>	Spring biased closed Port ③ pilot source
<b>3D</b>	Spring biased closed Higher of Ports ① or ② pilot source
<b>3E</b>	Spring biased Open Port ③ pilot source

Y	SPRINGS
	Cracking pressure
<b>35</b>	3.5 bar at port ① ; (X=3E at port ③)(Standard)



### TECHNICAL DATA

Max. Operating pressure: 350 bar

Rated flow: 95 l/min

Cavity-Tooling: 11A-3

Installation torque: 40-50 Nm

Weight: 0.13 (Z=N) 0.16 (Z=L) kg

- Area ratio:A3 to A1 = 1.8:1
- Area ratio:A3 to A2 = 2.25:1
- With Sealed Piston.
- All ports will accept 350 bar.

Z	OPTIONS
<b>N</b>	Non-adjustable
<b>NP</b>	Non-adjustable With stainless steel external metal components (Buna-N Seal)
<b>L</b>	Leakproof hex. socket screw. (Stroke Adjustment)