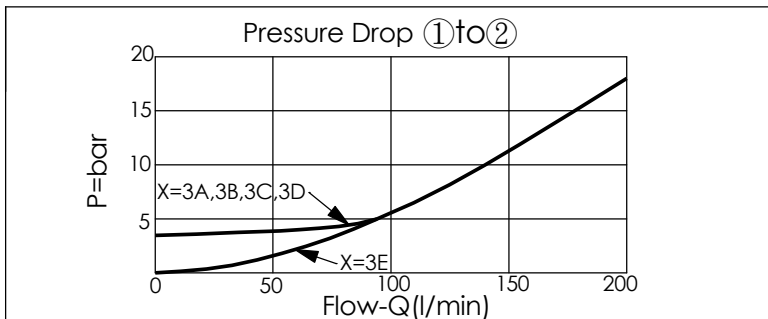
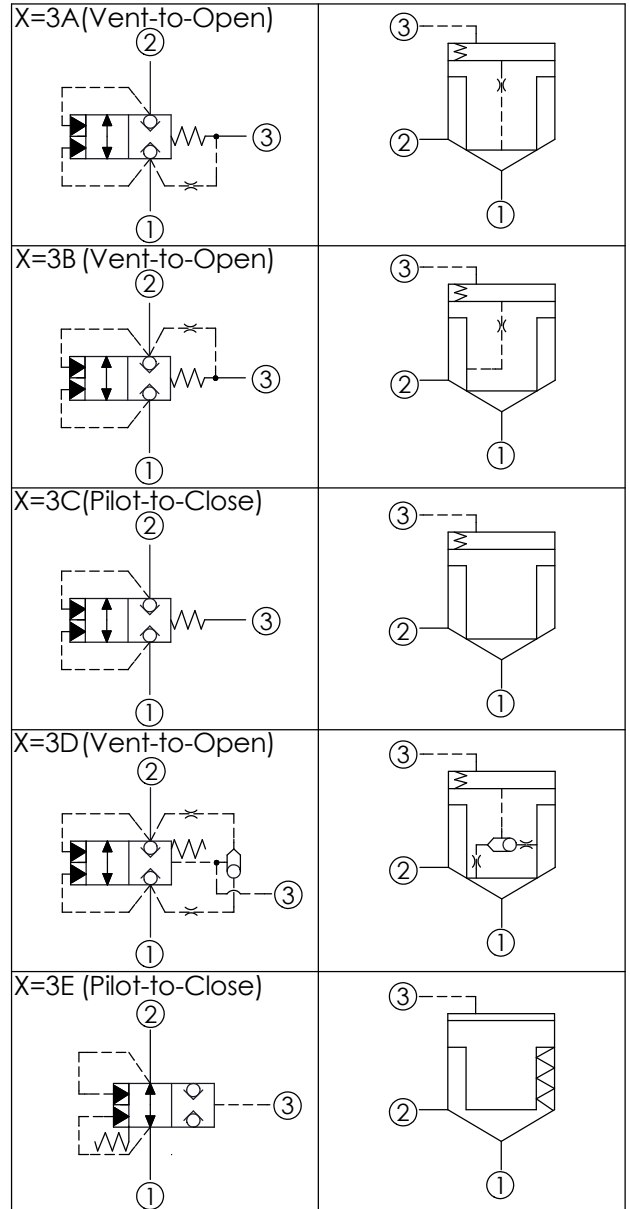
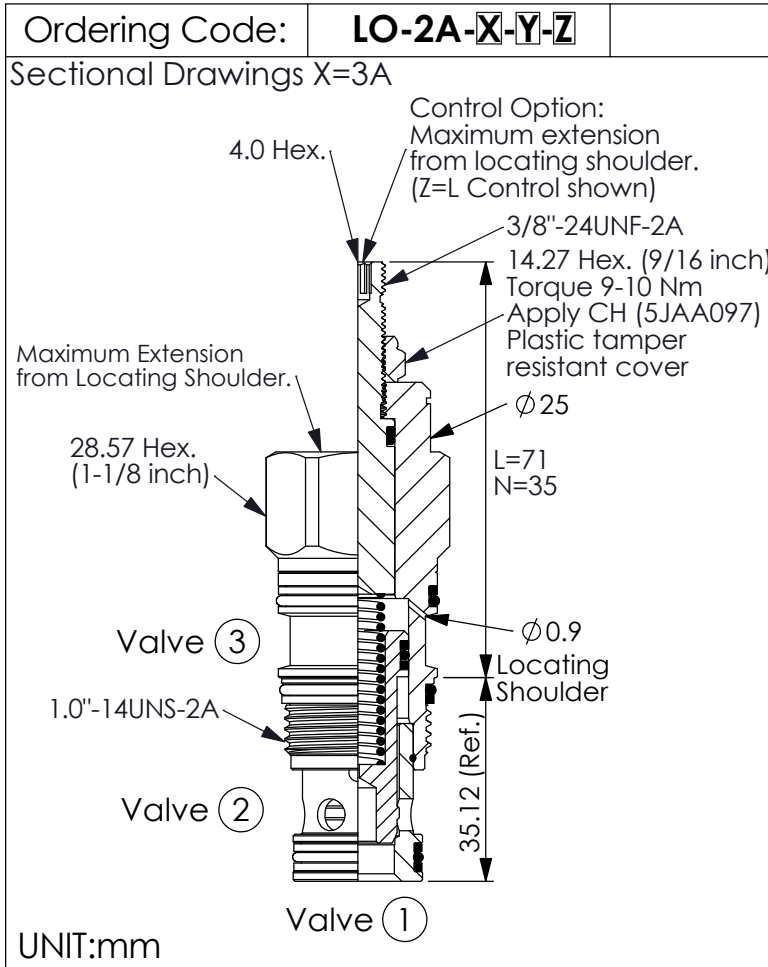


LOGIC ELEMENT VALVE (Unbalanced Poppet, Pilot-to-Close and Vent-to-Open)

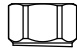


X	OPERATION
3A	Spring biased closed pilot source from Port ①
3B	Spring biased closed pilot source from Port ②
3C	Spring biased closed Port ③ pilot source
3D	Spring biased closed Higher of Ports ① or ② pilot source
3E	Spring biased Open Port ③ pilot source

Y	SPRINGS
Cracking pressure	
35	3.5 bar at port ① ; (X=3E at port ③)(Standard)
*20	2.0 bar at port ① ; (X=3E at port ③)

*Please take note of if the selection Y=20, the response speed of spring return is slower.
· Any technical questions, please feel free to consult with our sales dept.

TECHNICAL DATA	
Max. Operating pressure: 350 bar	
Rated flow:	200 l/min
Cavity-Tooling:	2A-3
Installation torque:	60-70 Nm
Weight:	0.23 (Z=N) 0.30 (Z=L) kg
<ul style="list-style-type: none"> · Area ratio:A3 to A1 = 1.8:1 · Area ratio:A3 to A2 = 2.25:1 · With Sealed Piston. · All ports will accept 350 bar. 	

Z	OPTIONS
N	Non-adjustable 
L	Leakproof hex. socket screw. (Stroke Adjustment) 