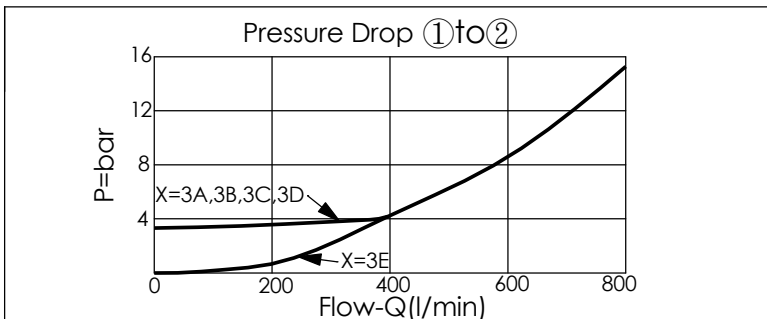
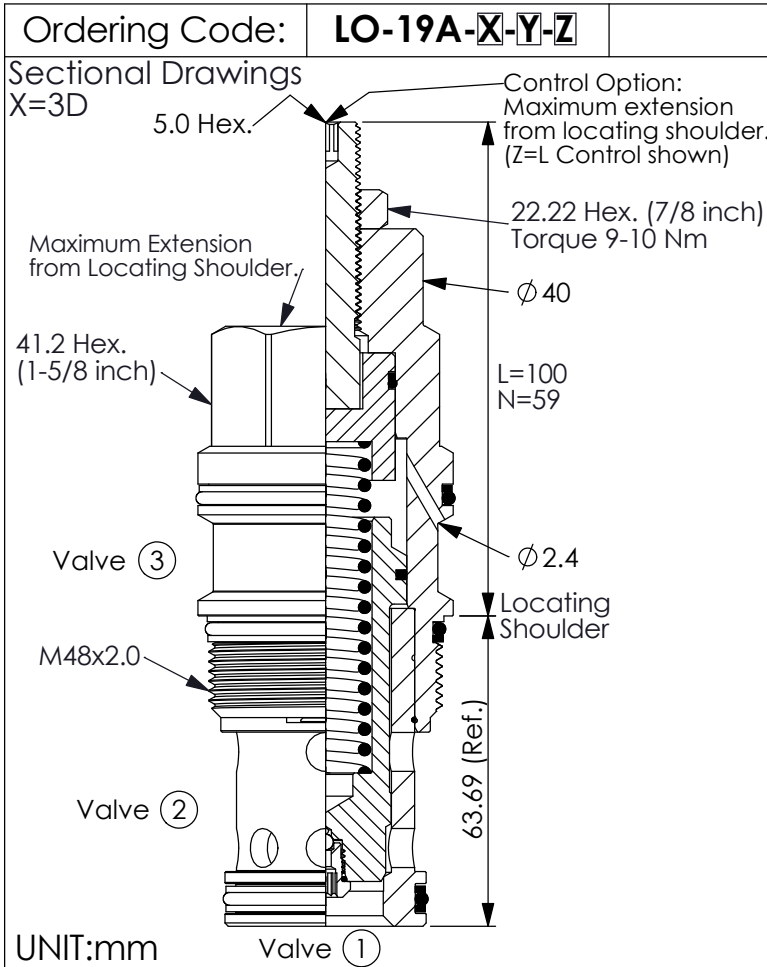
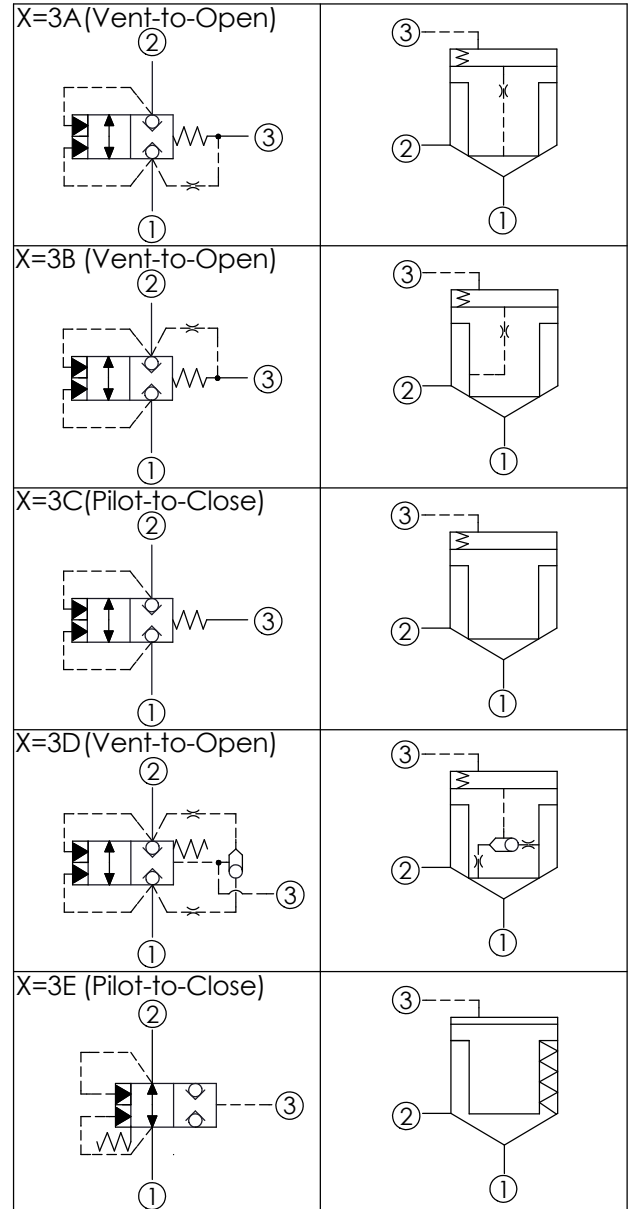


## LOGIC ELEMENT VALVE (Unbalanced Poppet, Pilot-to-Close and Vent-to-Open)



X	OPERATION
<b>3A</b>	Spring biased closed pilot source from Port ①
<b>3B</b>	Spring biased closed pilot source from Port ②
<b>3C</b>	Spring biased closed Port ③ pilot source
<b>3D</b>	Spring biased closed Higher of Ports ① or ② pilot source
<b>3E</b>	Spring biased Open Port ③ pilot source

Y	SPRINGS
	Cracking pressure
<b>35</b>	3.5 bar at port ① ; (X=3E at port ③)(Standard)



TECHNICAL DATA	
Max. Operating pressure:	350 bar
Rated flow:	760 l/min
Cavity-Tooling:	19A-3 (19AB-3)
Installation torque:	465-500 Nm
Weight:	1.19 (Z=N) 1.39 (Z=L) kg
<ul style="list-style-type: none"> <li>Area ratio:A3 to A1 = 1.8:1</li> <li>Area ratio:A3 to A2 = 2.25:1</li> <li>With Sealed Piston.</li> <li>All ports will accept 350 bar.</li> </ul>	

Z	OPTIONS
<b>N</b>	Non-adjustable
<b>L</b>	Leakproof hex. socket screw. (Stroke Adjustment)