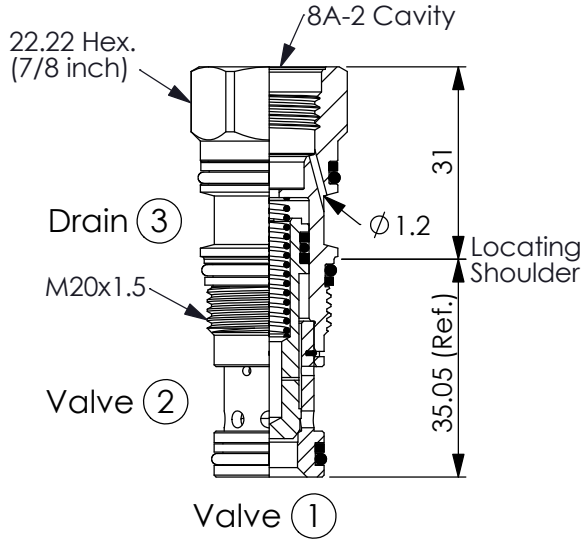


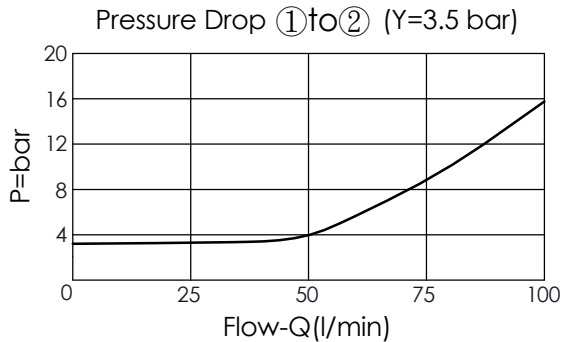
Ordering Code: **LO-11A-X-Y-Z**

Sectional Drawings X=3B

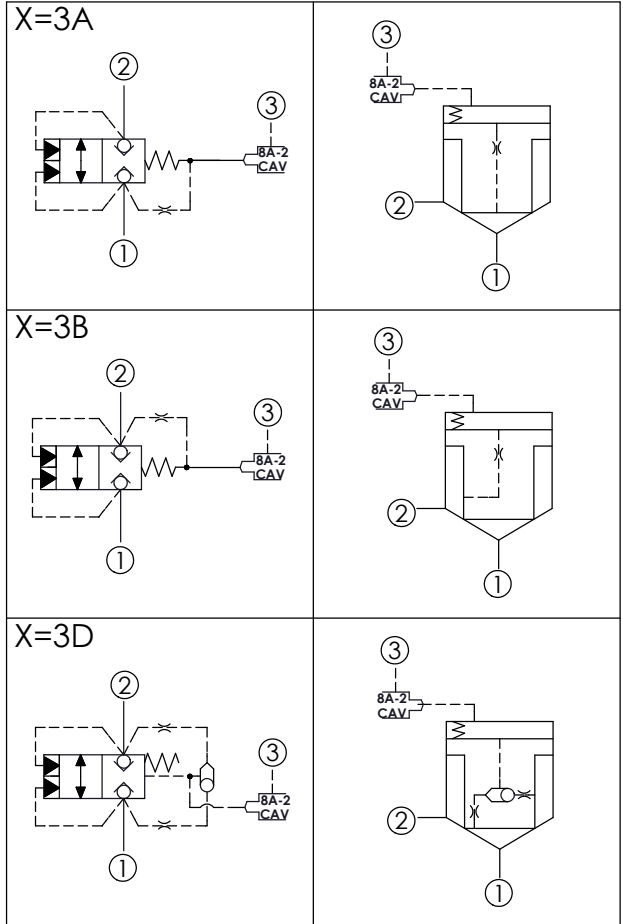


UNIT:mm

Illustrations / detail are for reference only. Data subject to change.



Y	SPRINGS	
	Cracking pressure	
D	3.5 bar at port ① (Standard)	



TECHNICAL DATA

Max. Operating pressure:	350 bar
Rated flow:	95 l/min
Cavity-Tooling:	11A-3
Installation torque:	40 - 50 Nm
Weight:	0.10 kg
<ul style="list-style-type: none"> Area ratio:A3 to A1 = 1.8:1 Area ratio:A3 to A2 = 2.25:1 With Sealed Piston. All ports will accept 350 bar. 	

X	OPERATION	
3A	Spring biased closed pilot source from Port ①	
3B	Spring biased closed pilot source from Port ②	
3D	Spring biased closed Higher of Ports ① or ② pilot source	

Z	CAVITIES	
8	8A-2 Cavity	