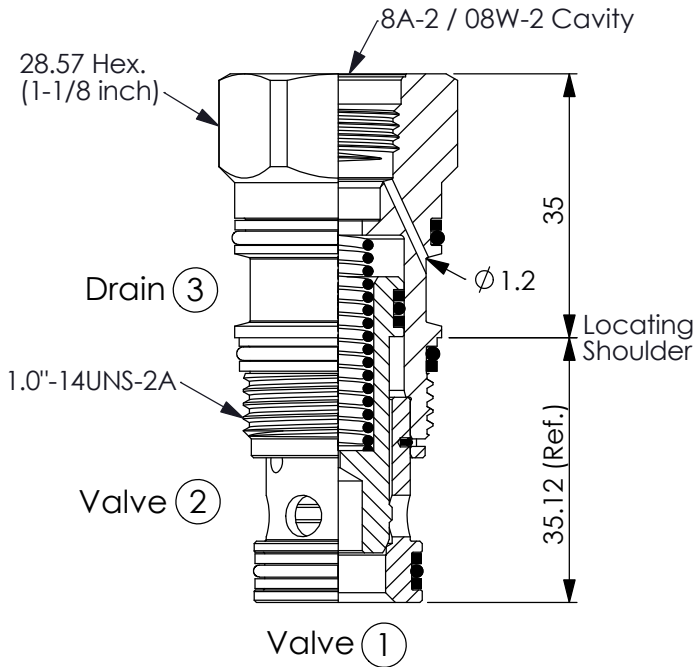


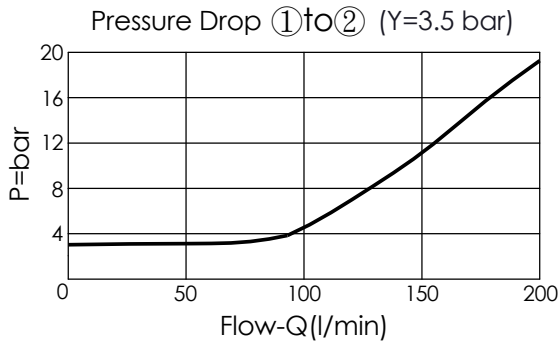
Ordering Code: **LO-2A-X-Y-Z**

Sectional Drawings X=3A



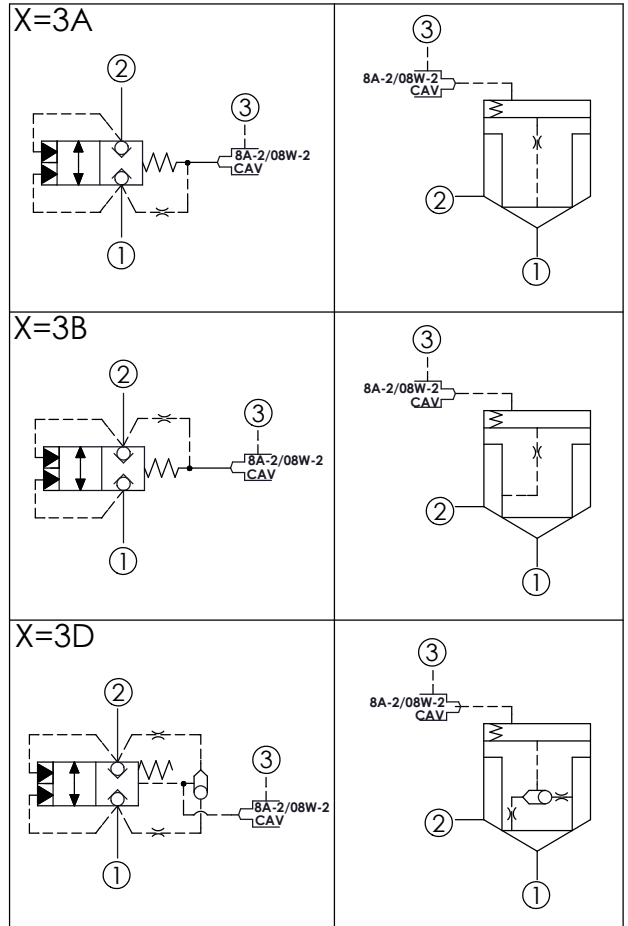
UNIT:mm

Illustrations / detail are for reference only. Data subject to change.



| Y | SPRINGS | |
|----|------------------------------|--|
| | Cracking pressure | |
| D | 3.5 bar at port ① (Standard) | |
| *C | 2.0 bar at port ① | |

*Please take note of if the selection Y=C, the response speed of spring return is slower.
 • Any technical questions, please feel free to consult with our sales dept.



TECHNICAL DATA

| | | |
|--|---------|-------|
| Max. Operating pressure: | 350 | bar |
| Rated flow: | 200 | l/min |
| Cavity-Tooling: | 2A-3 | |
| Installation torque: | 60 - 70 | Nm |
| Weight: | 0.20 | kg |
| <ul style="list-style-type: none"> • Area ratio:A3 to A1 = 1.8:1 • Area ratio:A3 to A2 = 2.25:1 • With Sealed Piston. • All ports will accept 350 bar. | | |

| X | OPERATION | |
|----|--|--|
| 3A | Spring biased closed pilot source from Port ① | |
| 3B | Spring biased closed pilot source from Port ② | |
| 3D | Spring biased closed Higher of Ports ① or ② pilot source | |

| Z | CAVITIES | |
|----|---|--|
| 8 | 8A-2 Cavity | |
| 8W | 08W-2 Cavity (For solenoid operated, Please refer to EP08W2A51*04 or EP08W2A52*04) | |