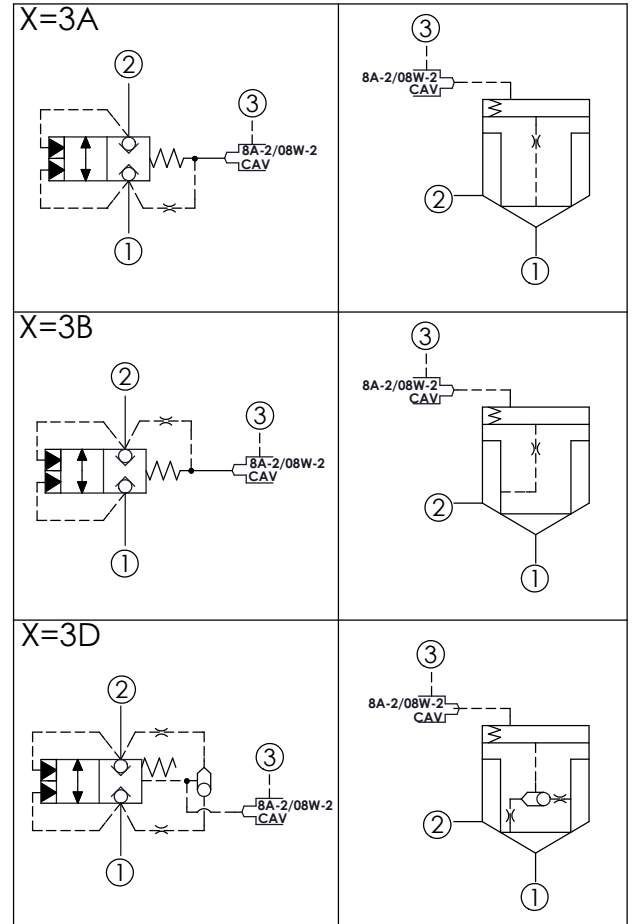


Y	SPRINGS	
	Cracking pressure	
D	3.5 bar at port ① (Standard)	
E	5.5 bar at port ①	
* B	1.2 bar at port ①	

*Please take note of if the selection Y=B, the response speed of spring return is slower.
 • Any technical questions, please feel free to consult with our sales dept.



TECHNICAL DATA	
Max. Operating pressure:	350 bar
Rated flow:	380 l/min
Cavity-Tooling:	17A-3
Installation torque:	200 - 215 Nm
Weight:	0.48 (X=3B) 0.55 (X=3A,3D) kg
<ul style="list-style-type: none"> • Area ratio:A3 to A1 = 1.8:1 • Area ratio:A3 to A2 = 2.25:1 • With Sealed Piston. • All ports will accept 350 bar. 	

X	OPERATION	
3A	Spring biased closed pilot source from Port ①	
3B	Spring biased closed pilot source from Port ②	
3D	Spring biased closed Higher of Ports ① or ② pilot source	

Z	CAVITIES	
8	8A-2 Cavity	
8W	08W-2 Cavity (For solenoid operated, Please refer to EP08W2A51*04 or EP08W2A52*04)	