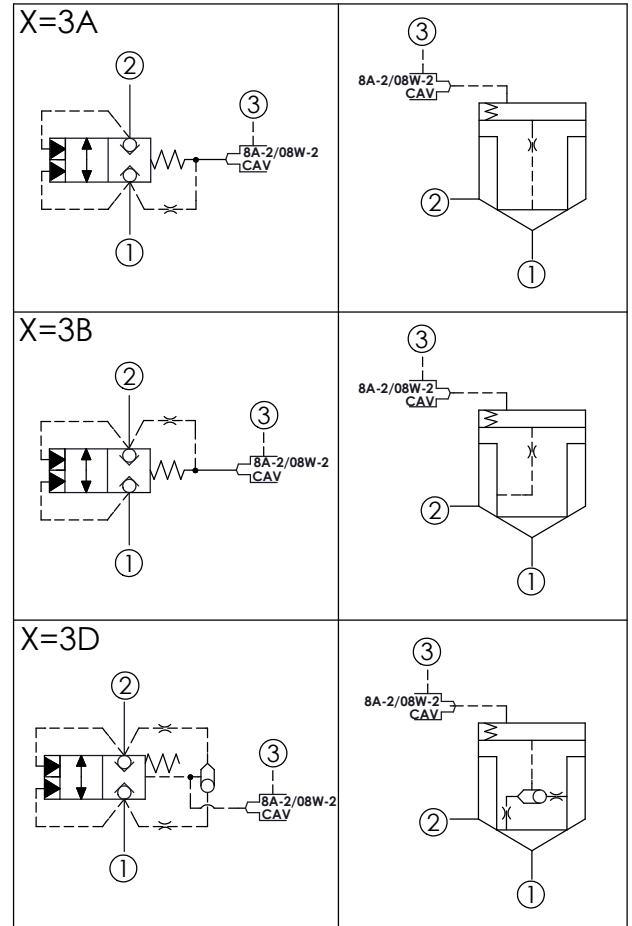


Y	SPRINGS	
	Cracking pressure	
D	3.5 bar at port ① (Standard)	
*B	1.2 bar at port ①	

\*Please take note of if the selection Y=B, the response speed of spring return is slower.  
· Any technical questions, please feel free to consult with our sales dept.



TECHNICAL DATA	
Max. Operating pressure:	350 bar
Rated flow:	760 l/min
Cavity-Tooling:	19A-3 (19AB-3)
Installation torque:	465 - 500 Nm
Weight:	1.22 (Z=8) 1.29 (Z=8W) kg
<ul style="list-style-type: none"> <li>· Area ratio:A3 to A1 = 1.8:1</li> <li>· Area ratio:A3 to A2 = 2.25:1</li> <li>· With Sealed Piston.</li> <li>· All ports will accept 350 bar.</li> </ul>	

X	OPERATION	
3A	Spring biased closed pilot source from Port ①	
3B	Spring biased closed pilot source from Port ②	
3D	Spring biased closed Higher of Ports ① or ② pilot source	

Z	CAVITIES	
8	8A-2 Cavity	
8W	08W-2 Cavity (For solenoid operated, Please refer to EP08W2A51*04 or EP08W2A52*04)	