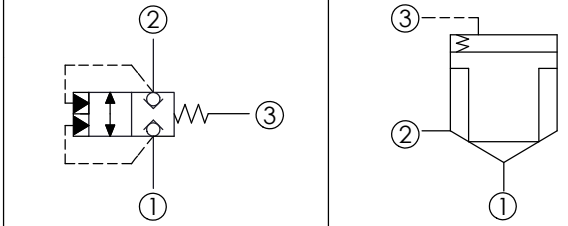
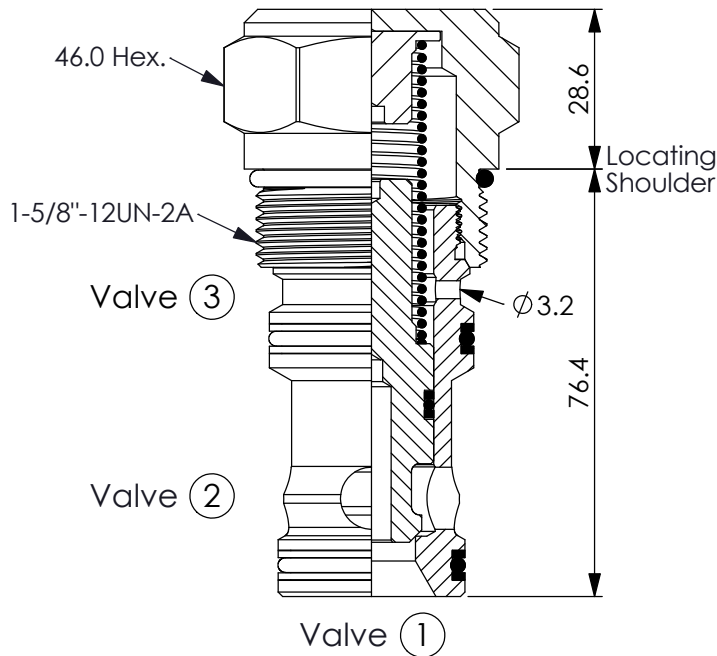


## LOGIC ELEMENT VALVE (Unbalanced Poppet, Pilot-to-Close)

Ordering Code: **LO-20WA-X-Y-Z**

X=3C (Pilot-to-Close)



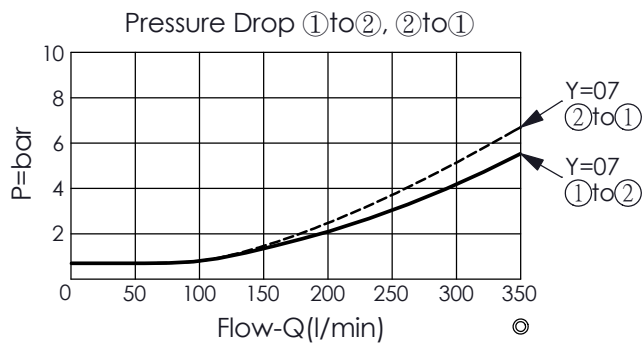
### TECHNICAL DATA

Max. Operating pressure:	350	bar
Rated flow:	303	l/min
Cavity-Tooling:	20WA-3	
Installation torque:	150 - 160	Nm
Weight:	0.686	kg

- Area ratio: A3 to A1 = 2:1
- Area ratio: A3 to A2 = 2:1
- With Sealed Piston.
- All ports will accept 350 bar.

UNIT:mm

Illustrations / detail are for reference only. Data subject to change.



### X OPERATION

**3C** Spring biased closed Port ③ pilot source

**Y**

### SPRINGS

Cracking pressure

**07**

0.7 bar (Standard)

### Z OPTIONS

**N** Non-adjustable