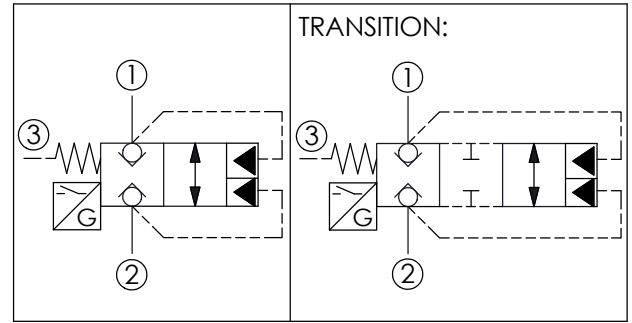
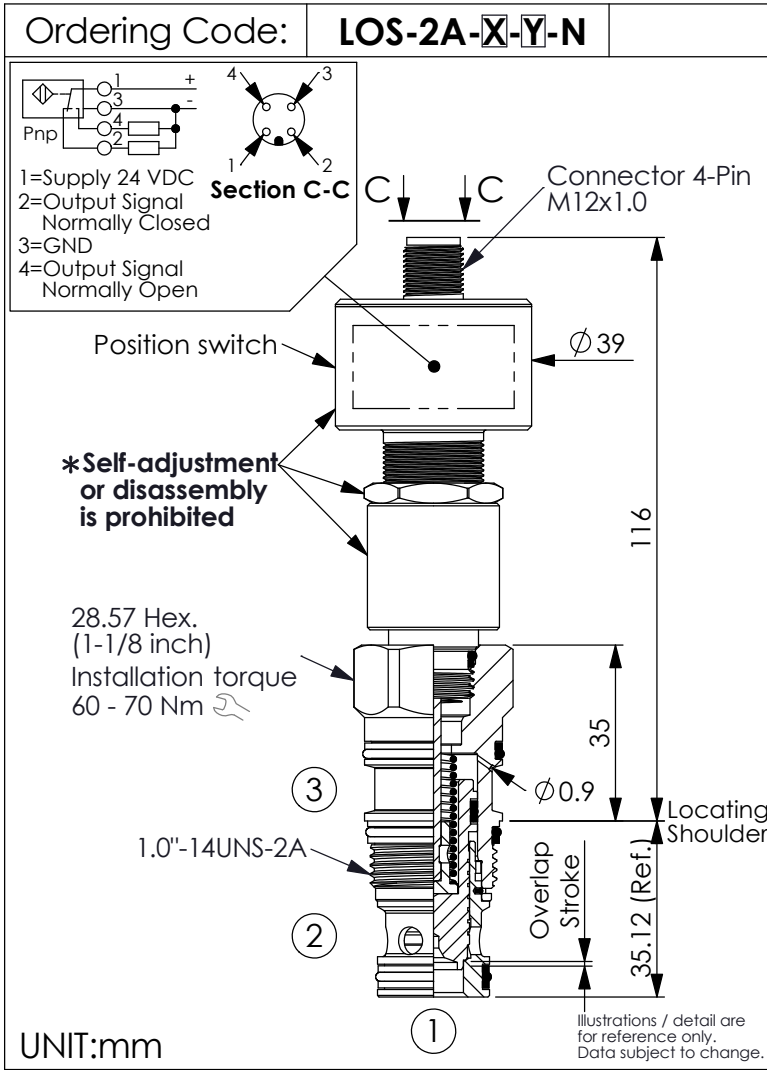
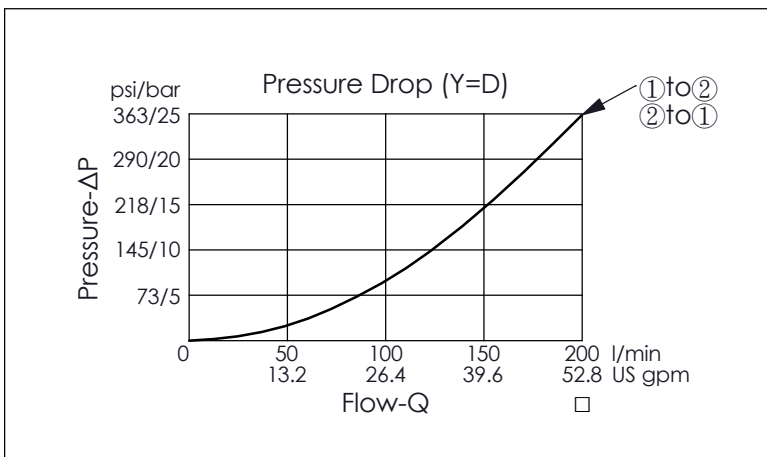


LOGIC ELEMENT VALVE (Unbalanced Poppet, Pilot-to-Close, Spring Biased Closed, with Position Switch)



TECHNICAL DATA	
Max. Operating pressure:	350 bar
Rated flow:	200 l/min
Cavity-Tooling:	2A-3
Installation torque:	60 - 70 Nm
Weight:	0.413 kg
<ul style="list-style-type: none"> Area ratio:A3 to A1 = 1.8:1 Area ratio:A3 to A2 = 2.25:1 With Sealed Piston. All ports will accept 350 bar. 	

POSITION SWITCH DATA	
Supply Voltage:	24 VDC (20 - 30 VDC)
Maximum Output Load:	400 mA (Duty Cycle 100%)
Operating Temperature Range:	-25 to 80 °C
Thermal Shift:	≤±0.1 mm (0 to 80 °C)
Turn On Time:	≤ 25 ms
Connector:	M12x1.0 (4-Pin)
Connector Environment Rating:	IP65
<ul style="list-style-type: none"> With Reverse Polarity Protection and Short Circuit Protection. The closure of this valve is confirmed by the signal from the position switch. 	



SPRINGS	
Y	Cracking pressure
D	3.5 bar at port ① (Standard)

OPERATION	
3C	Spring biased closed Port ③ pilot source
<ul style="list-style-type: none"> Maximum Leakage Approximately (0.07 cc/min./70 bar) Maximum Transition Leakage Approximately (30 cc/min./70 bar) 	