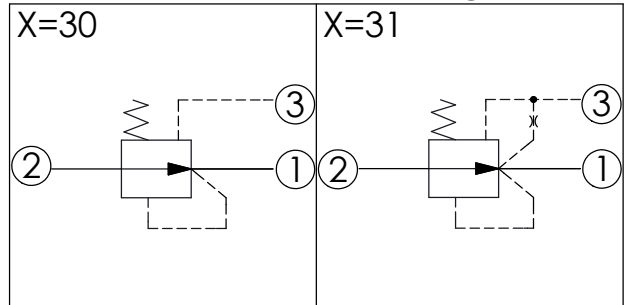
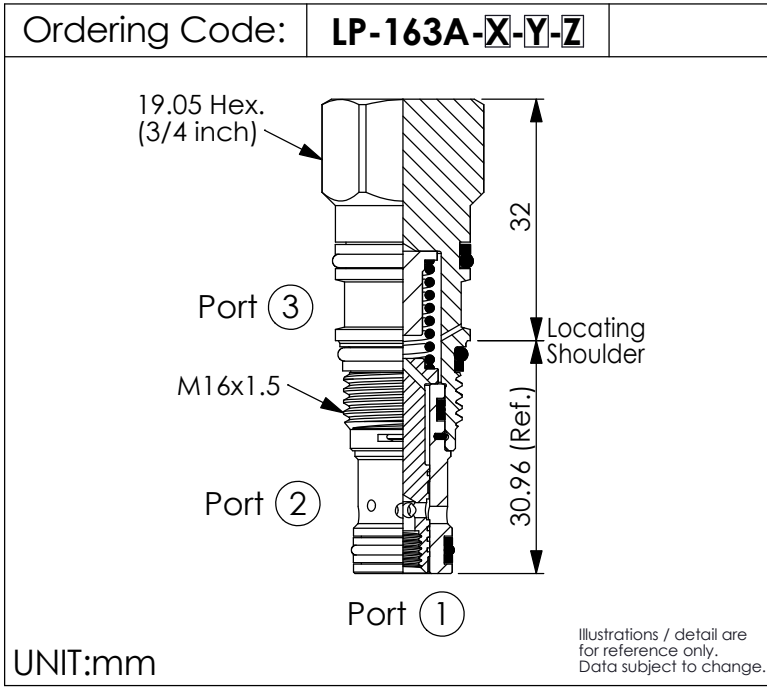
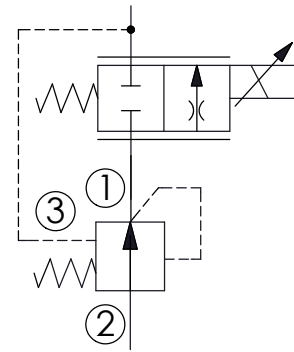


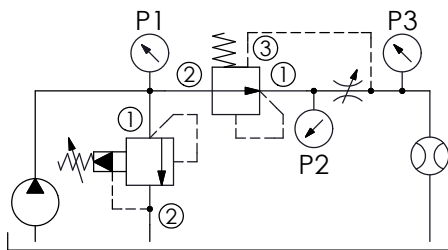
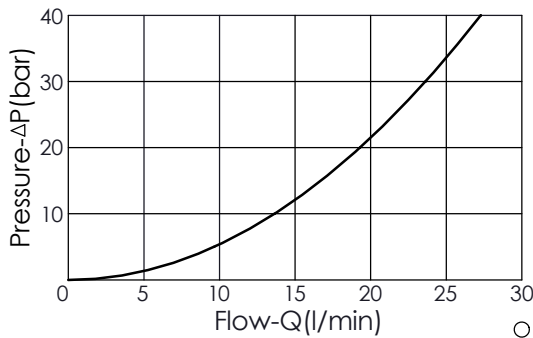
LOGIC ELEMENT VALVE (Spool Type Normally Open Modulating Element)



Example: Pre-Compensated Proportional Flow Control
X=30



Capacity as a Restrictive Compensator
Port ② to Port ① Pressure Drop ΔP (P1 to P2)



TECHNICAL DATA

Max. Operating pressure: 350 bar

Rated flow: 30 l/min
(Refer to performance chart)

Cavity-Tooling: 163A-3

Installation torque: 27 - 33 Nm

Weight: 0.088 kg

X	OPERATION	
30	External Pilot (restrictive compensator) (If bigger flow or bigger pressure difference is needed, please choose PD-*-3J)	
31	Internal Pilot Port ① to Port ③ (mainstage reducing element)	

Y	SPRINGS	
	Cracking pressure	
35	3.5 bar	
70	7.0 bar	
140	14.0 bar	
Z	OPTION	
N	Non-adjustable	