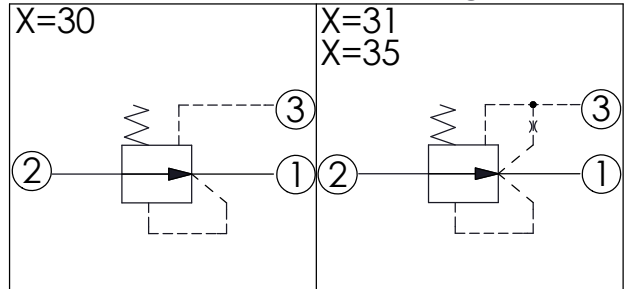
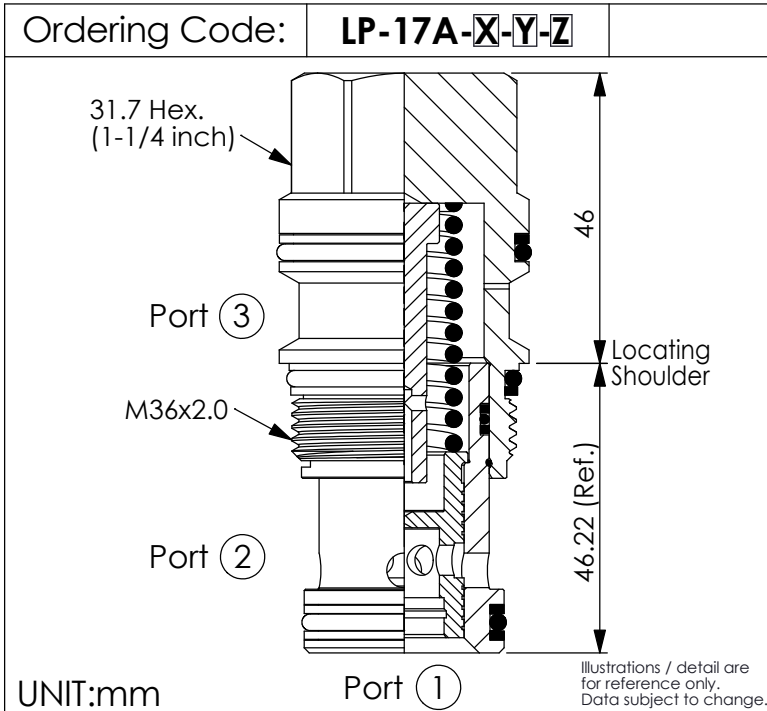
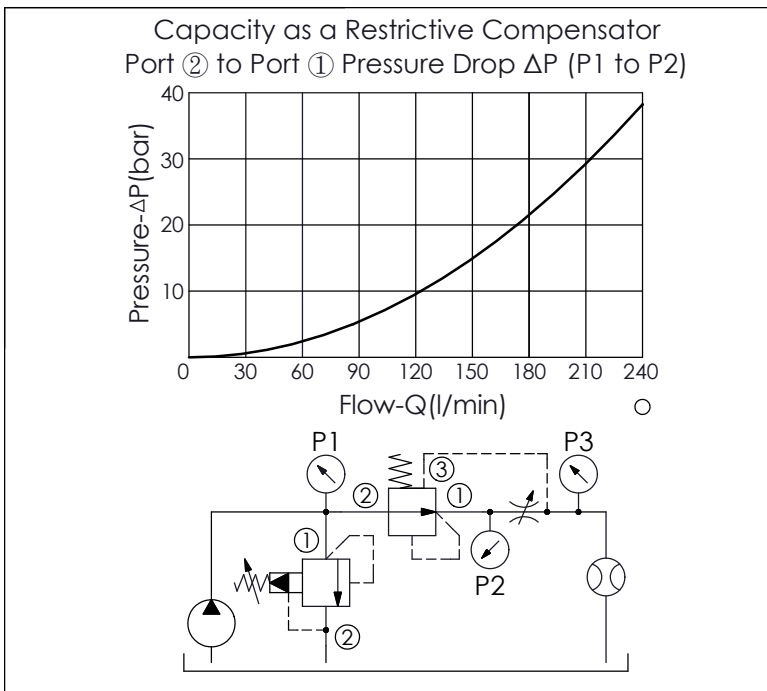
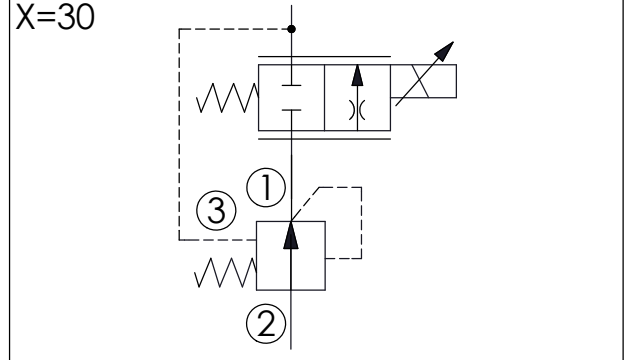


LOGIC ELEMENT VALVE (Spool Type Normally Open Modulating Element)



Example: Pre-Compensated Proportional Flow Control



TECHNICAL DATA	
Max. Operating pressure:	350 bar
Rated flow:	240 l/min (Refer to performance chart)
Cavity-Tooling:	17A-3
Installation torque:	200 - 215 Nm
Weight:	0.486 kg

Y	SPRINGS
	Cracking pressure
35	3.5 bar
70	7.0 bar
100	10.0 bar
140	14.0 bar

Z	OPTION
N	Non-adjustable
NP	Non-adjustable With stainless steel external metal components (Buna-N Seal)

X	OPERATION
30	External Pilot (restrictive compensator) (If bigger flow or bigger pressure difference is needed, please choose PD-*-3J) (If you need bigger orifice, please consult our sales department)
31	Internal Pilot Port ① to Port ③ (mainstage reducing element)
35	Internal Pilot Port ① to Port ③ (mainstage reducing element) (Impact Resistant Type) (No Copper Seat Filter)