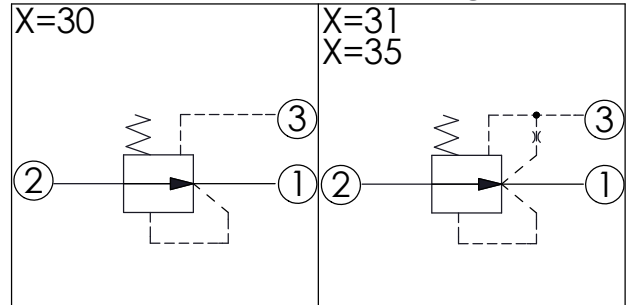
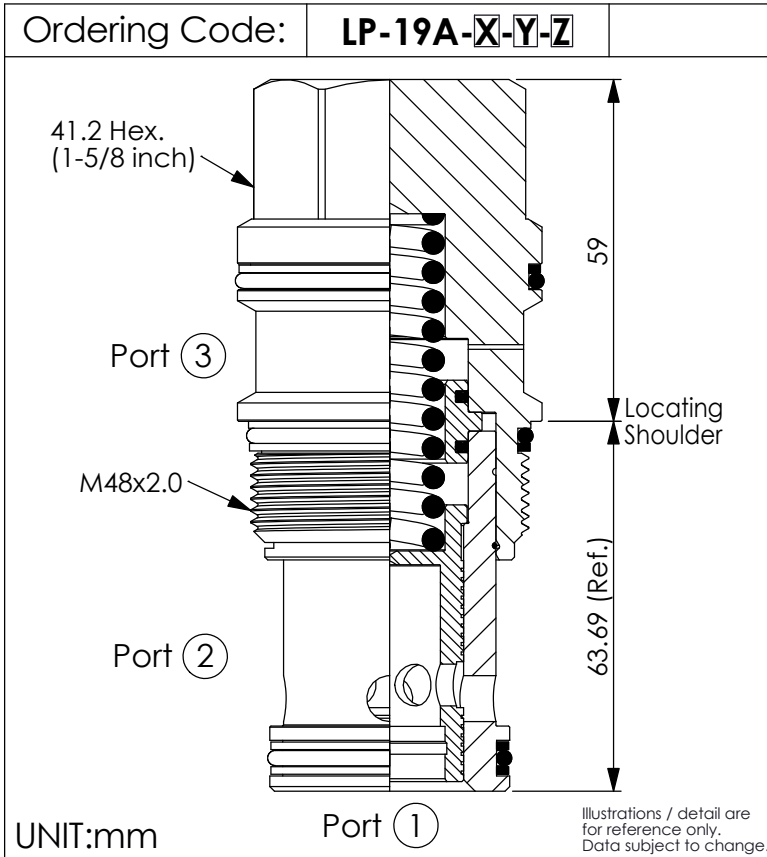
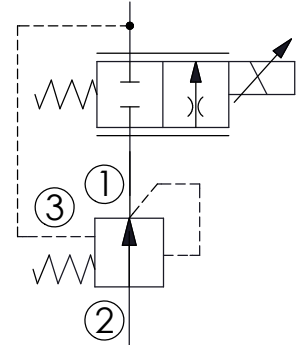


## LOGIC ELEMENT VALVE (Spool Type Normally Open Modulating Element)



Example: Pre-Compensated Proportional Flow Control  
X=30



### TECHNICAL DATA

Max. Operating pressure: 350 bar

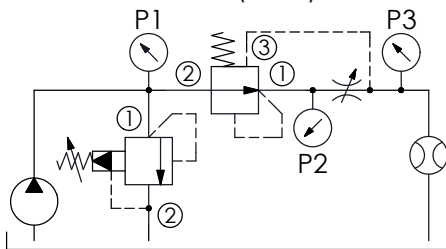
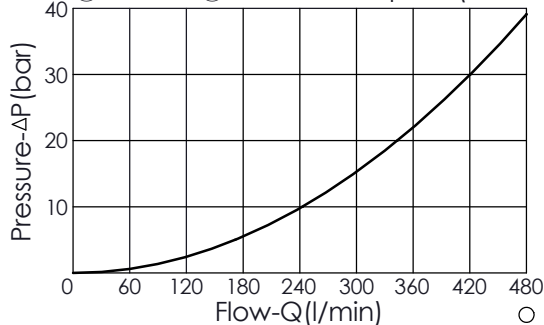
Rated flow: 480 l/min  
(Refer to performance chart)

Cavity-Tooling: 19A-3 (19AB-3)

Installation torque: 465 - 500 Nm

Weight: 1.132 kg

Capacity as a Restrictive Compensator  
Port ② to Port ① Pressure Drop  $\Delta P$  (P1 to P2)



Y	SPRINGS	
	Cracking pressure	
35	3.5 bar	
70	7.0 bar	
100	10.0 bar	
140	14.0 bar	

Z	OPTION	
N	Non-adjustable	

X	OPERATION	
30	External Pilot (restrictive compensator) (If bigger flow or bigger pressure difference is needed, please choose <b>PD-*-3J</b> )	
31	Internal Pilot Port ① to Port ③ (mainstage reducing element)	
35	Internal Pilot Port ① to Port ③ (mainstage reducing element) (Impact Resistant Type) (No Copper Seat Filter)	