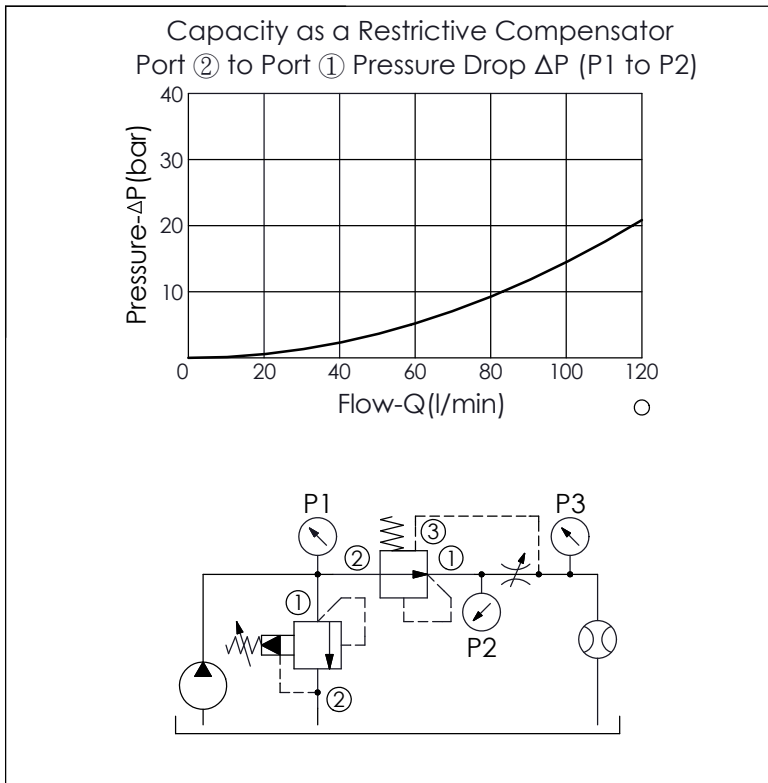
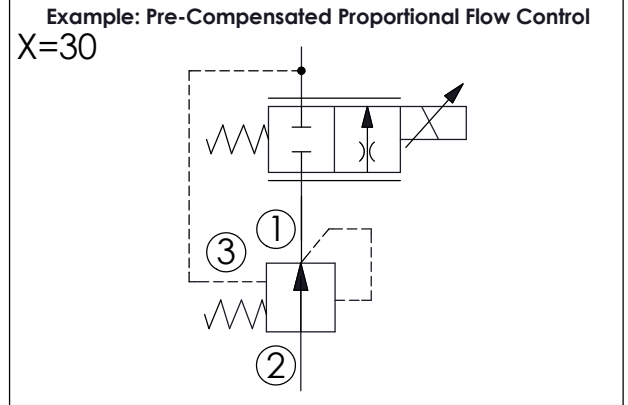
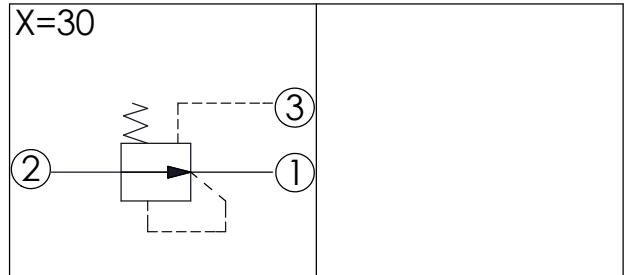
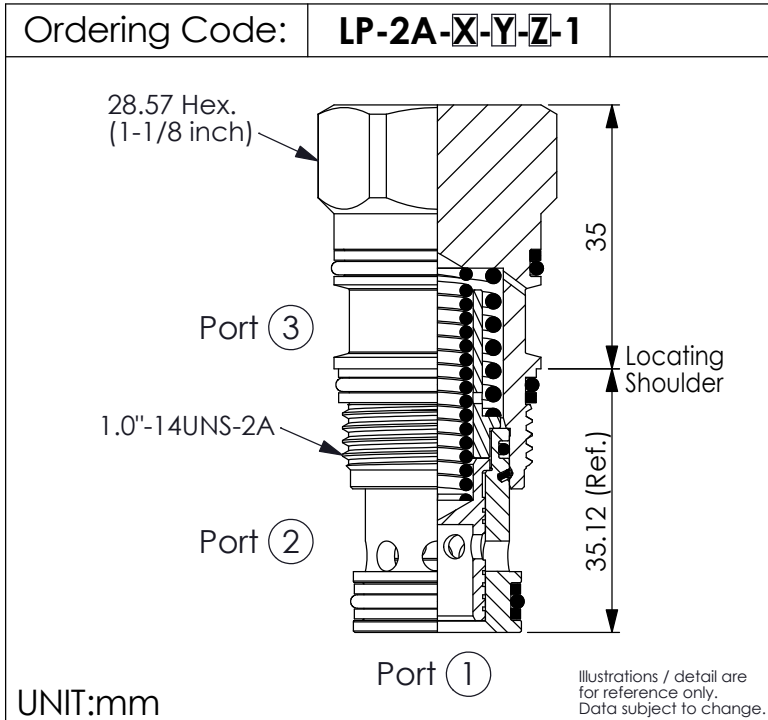


LOGIC ELEMENT VALVE (High Flow, Spool Type Normally Open Modulating Element)



TECHNICAL DATA	
Max. Operating pressure:	350 bar
Rated flow:	120 l/min (Refer to performance chart)
Cavity-Tooling:	2A-3
Installation torque:	60 - 70 Nm
Weight:	0.220 kg

X	OPERATION
30	External Pilot (restrictive compensator)

Y	SPRINGS
	Cracking pressure
35	3.5 bar
70	7.0 bar
100	10.0 bar
140	14.0 bar
200	20.0 bar

Z	OPTION
N	Non-adjustable