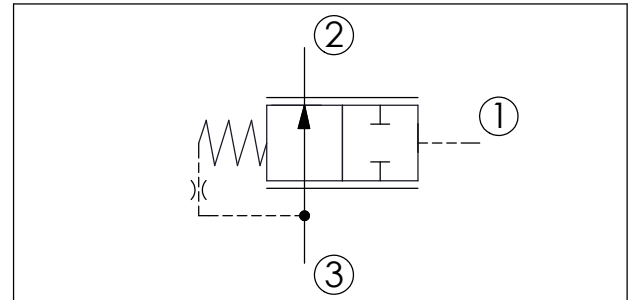
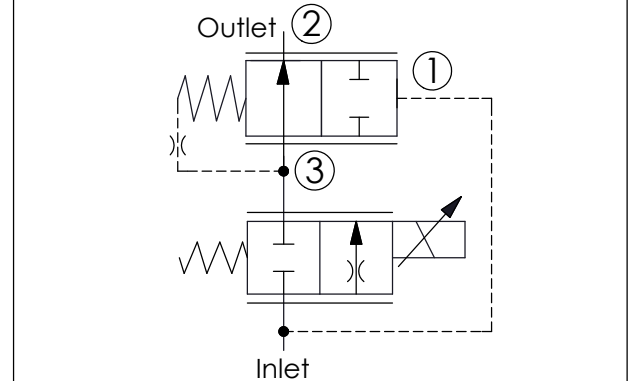


| Y | SPRINGS | |
|-----|-------------------|--|
| | Cracking pressure | |
| 70 | 7.0 bar | |
| 100 | 10.0 bar | |
| 140 | 14.0 bar | |

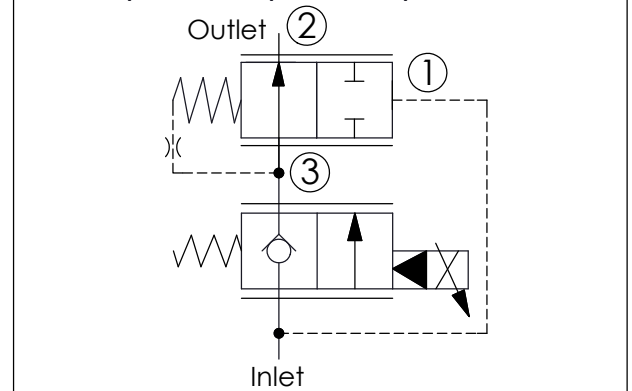
| Z | OPTIONS | |
|---|----------------|--|
| N | Non-adjustable | |



X=33 Example: Post-Compensated Proportional Flow Control



X=3C Example: Post-Compensated Proportional Flow Control



| TECHNICAL DATA | | |
|----------------------|-------|-------|
| Max. pressure: | 240 | bar |
| Rated flow: | 40 | l/min |
| Cavity-Tooling: | 10W-3 | |
| Installation torque: | 35-45 | Nm |
| Weight: | 0.15 | kg |

| X | OPERATION | |
|----|---|--|
| 33 | Normally Open (Port ① spool without sealed pilot) | |
| 3C | Normally Open (Port ① spool with sealed pilot) | |

• Maximum Leakage Approximately (60 cc/min./210 bar)