

Ordering Code: **LR-11A-X-Y-Z**

22.22 Hex.
(7/8 inch)

Port ③

M20x1.5

Port ②

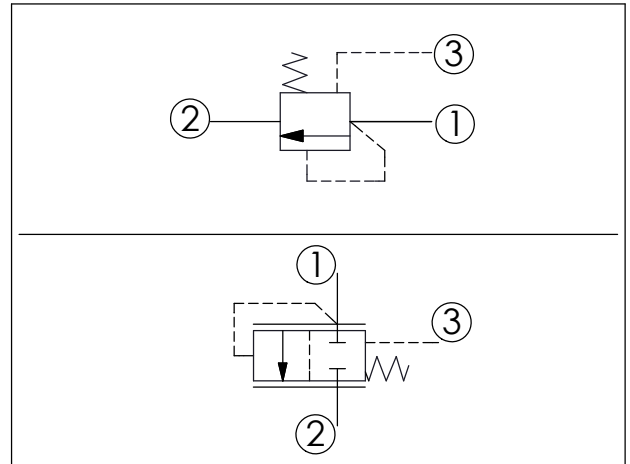
Port ①

30

Locating Shoulder

35.05 (Ref.)

UNIT:mm



TECHNICAL DATA

Max. Operating pressure:	350	bar
Rated flow:	6	l/min
Cavity-Tooling:	11A-3	
Installation torque:	40-50	Nm
Weight:	0.13	kg

X	OPERATION	
36	Max. Flow:6 LPM External Pilot (bypass compensator)	

Y	SPRINGS	
	Cracking pressure	
35	3.5 bar	
70	7.0 bar	
100	10.0 bar	
140	14.0 bar	

Z	OPTION	
N	Non-adjustable	