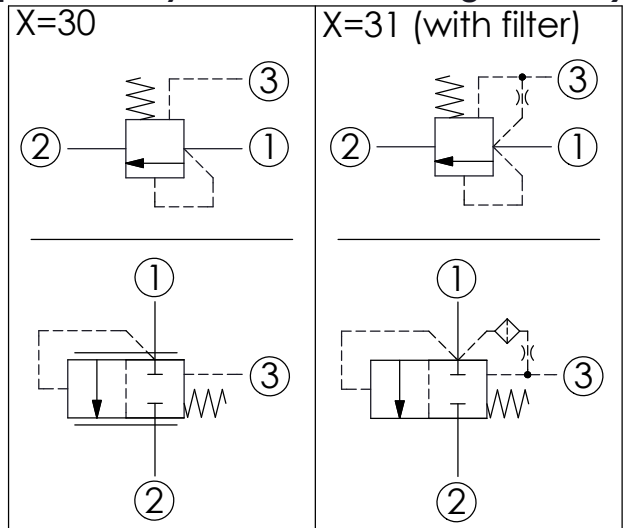
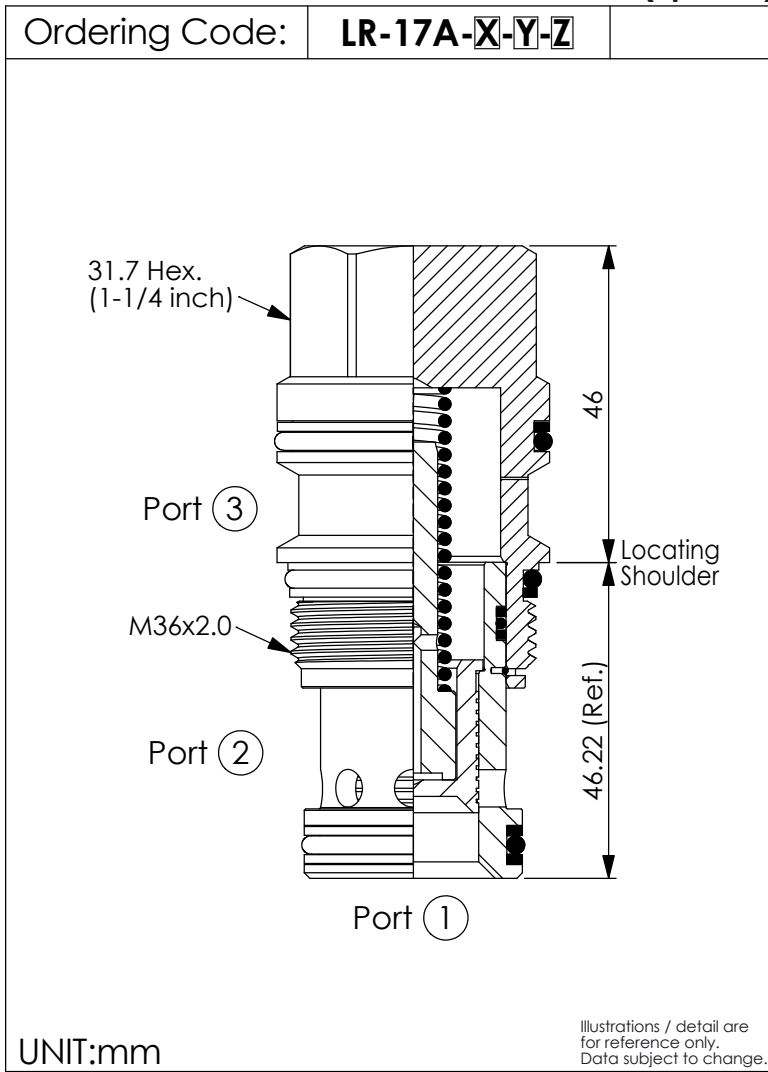
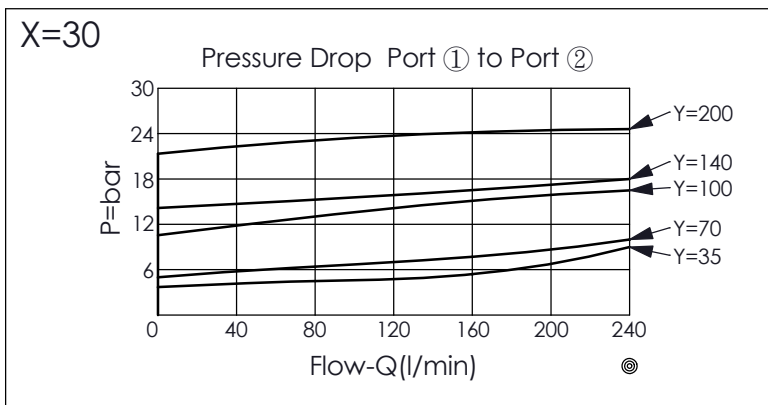


LOGIC ELEMENT VALVE (Spool Type Normally Closed Modulating Element)



TECHNICAL DATA		
Max. pressure:	350	bar
Rated flow:	240	l/min
Cavity-Tooling:	17A-3	
Installation torque:	200 - 215	Nm
Weight:	0.475	kg



X	OPERATION
30	External Pilot (bypass compensator)
31	Internal Pilot (Port ① to Port ③) (mainstage relief element)

Y	SPRINGS	
	Cracking pressure	
10	1.0 bar	(Only X=31)
35	3.5 bar	
70	7.0 bar	
100	10.0 bar	
140	14.0 bar	
200	20.0 bar	

Z	OPTION
N	Non-adjustable