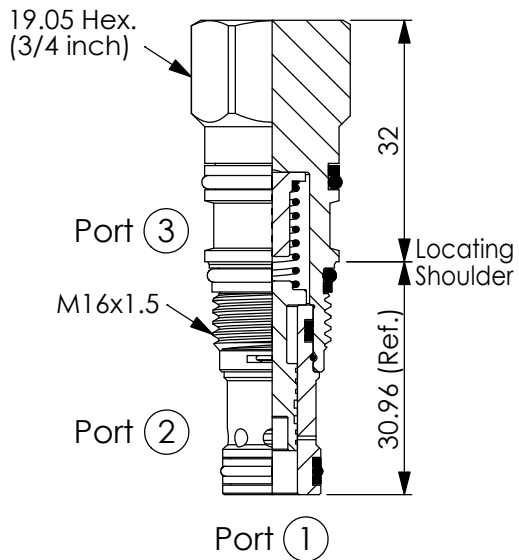
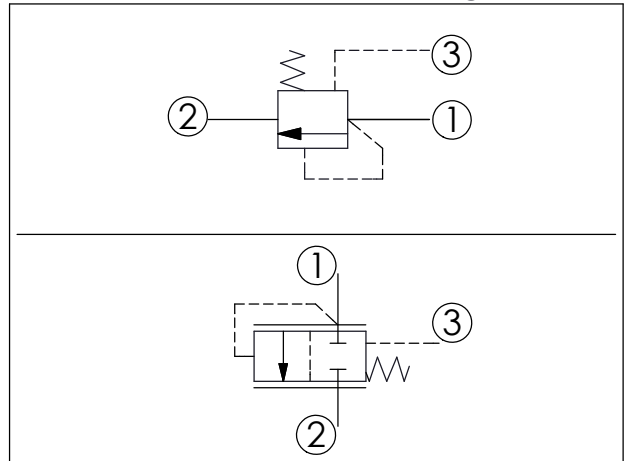


Ordering Code: **LR-163A-X-Y-Z**

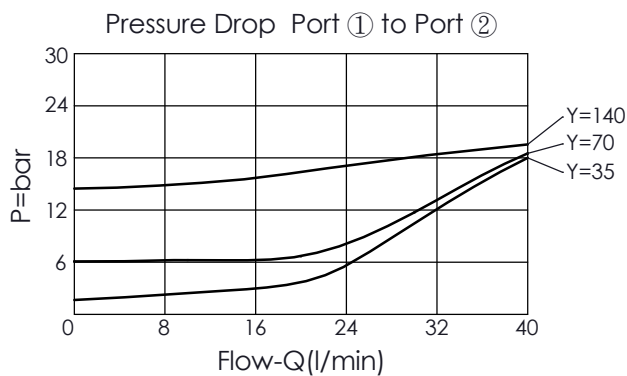


UNIT:mm



TECHNICAL DATA

Max. Operating pressure:	350	bar
Rated flow:	30	l/min
Cavity-Tooling:	163A-3	
Installation torque:	27-33	Nm
Weight:	0.09	kg



X OPERATION

30 External Pilot
(bypass compensator)

Y

SPRINGS

Cracking pressure

35 3.5 bar

70 7.0 bar

140 14.0 bar

Z OPTION

N Non-adjustable