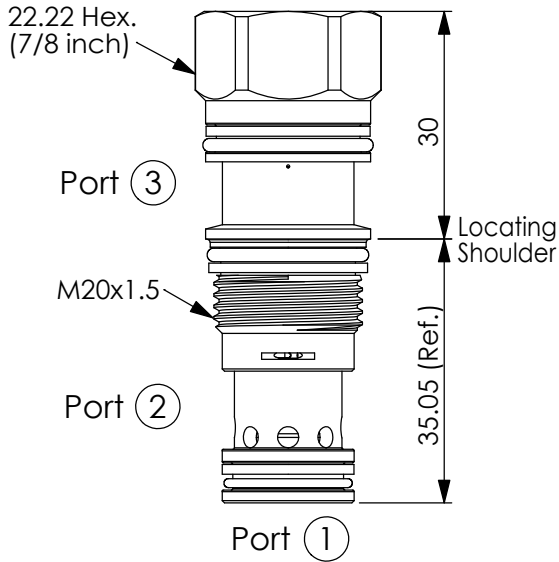
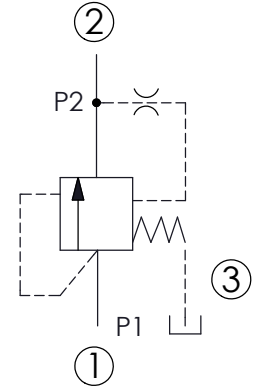


Ordering Code: **LR-11A-X-Y-Z**

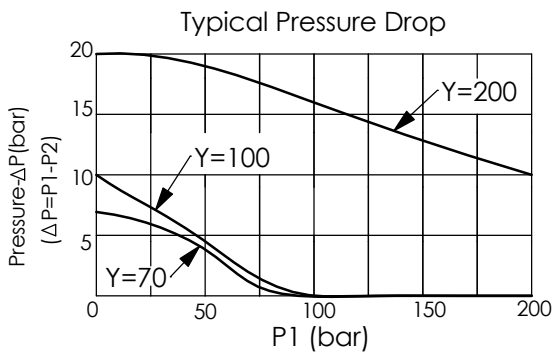


UNIT:mm



TECHNICAL DATA

Max. pressure:	350	bar
Rated flow:	60	l/min
Cavity-Tooling:	11A-3	
Installation torque:	40-50	Nm
Weight:	0.12	kg



X OPERATION

32 Pressure Pre-Load

Y

SPRINGS

Cracking Pressure

70	7 bar
100	10 bar
140	14 bar
200	20 bar

Z

OPTION

N Non-adjustable