

LOGIC ELEMENT VALVE (Poppet Type Normally Closed Modulating Element)

Ordering Code: **LR-17A-X-Y-Z**

31.7 Hex.
(1-1/4 inch)

Port ③

M36x2.0

Port ②

Port ①

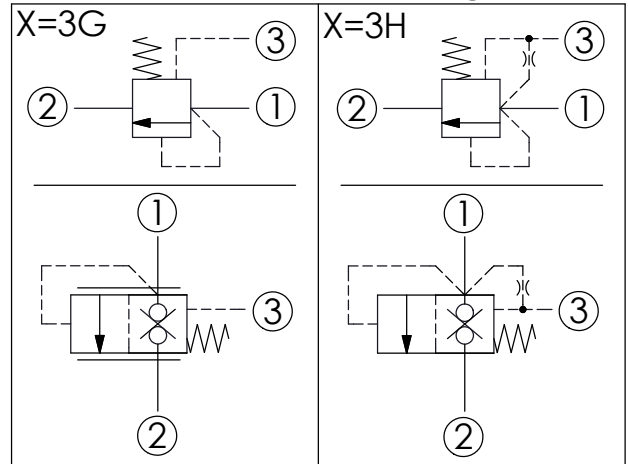
46

Locating Shoulder

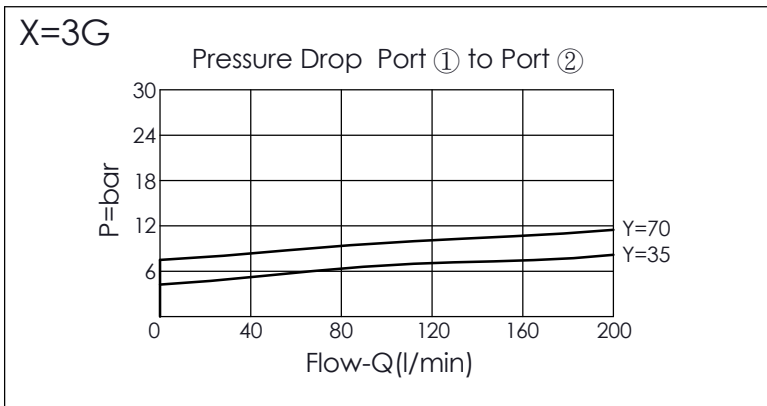
46.22 (Ref.)

UNIT:mm

Illustrations / detail are for reference only. Data subject to change.



TECHNICAL DATA		
Max. pressure:	350	bar
Rated flow:	200	l/min
Cavity-Tooling:	17A-3	
Installation torque:	200 - 215	Nm
Weight:	0.47	kg



X	OPERATION
3G	Poppet Type External Pilot (bypass compensator)
3H	Poppet Type Internal Pilot (Port ① to Port ③) (mainstage relief element)

Y	SPRINGS	
	Cracking pressure	
35	3.5 bar	
70	7.0 bar	

Z	OPTION
N	Non-adjustable