

LOGIC ELEMENT VALVE (Variable Pump Pressure Pre-Load Valve)

Ordering Code: **LR-19A-X-Y-Z**

41.2 Hex. (1-5/8 inch)

59

Port ③

Locating Shoulder

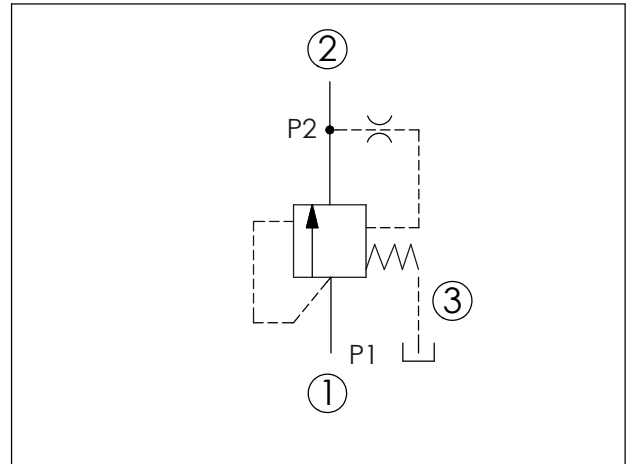
M48x2.0

63.69 (Ref.)

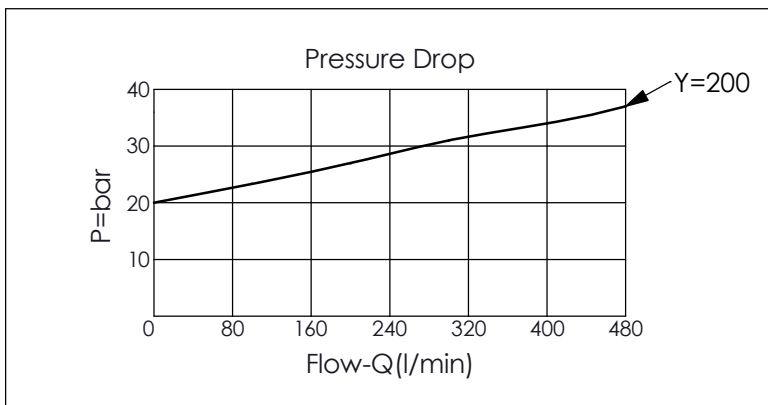
Port ②

Port ①

UNIT:mm



TECHNICAL DATA		
Max. pressure:	350	bar
Rated flow:	480	l/min
Cavity-Tooling:	19A-3 (19AB-3)	
Installation torque:	465-500	Nm
Weight:	1.10	kg



X	OPERATION	
32	Variable Pump Pressure Pre-Load	

Y	SPRINGS	
	Cracking Pressure	
200	20 bar	

Z	OPTION	
N	Non-adjustable	