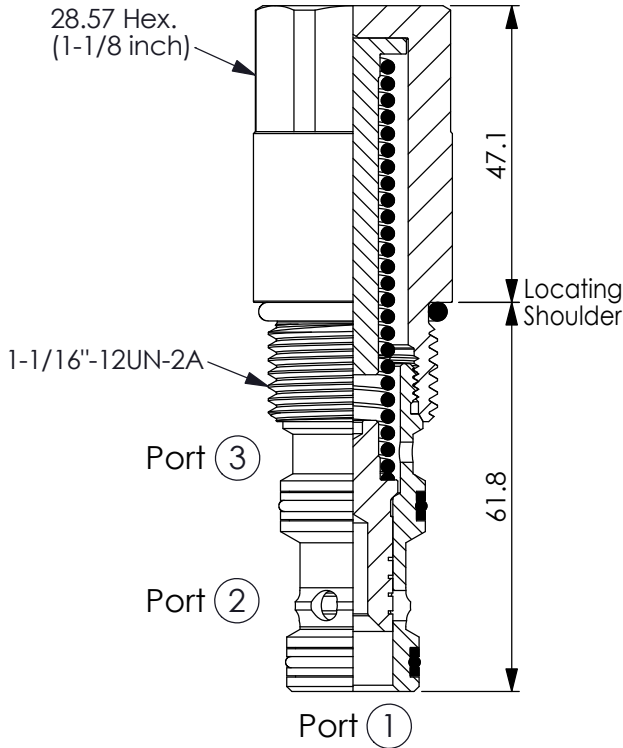
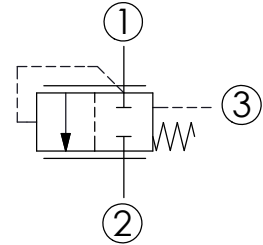
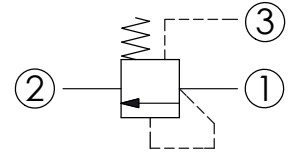
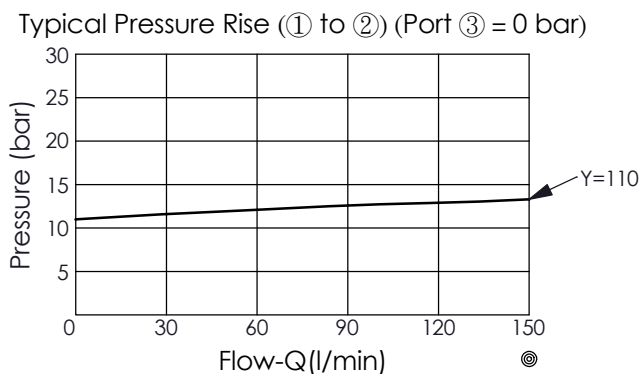
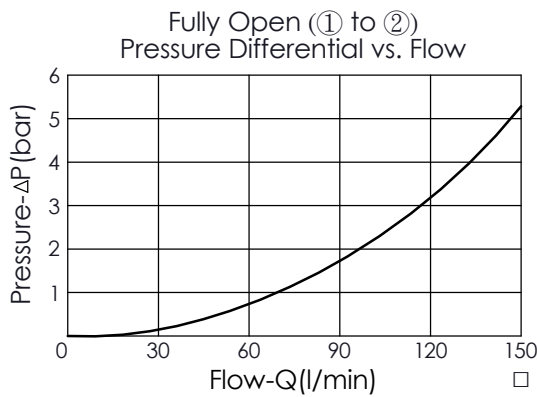


Ordering Code: **LR-12WS-X-Y-Z**



UNIT:mm

Illustrations / detail are for reference only. Data subject to change.



### TECHNICAL DATA

Max. Operating pressure:	350	bar
Rated flow:	150	l/min
(Refer To Performance Chart)		
Cavity-Tooling:	12WS-3	
Installation torque:	45 - 55	Nm
Weight:	0.355	kg

### X OPERATION

**30** External Pilot  
(bypass compensator)

### Y SPRINGS

Cracking pressure

**110** 11.0 bar

### Z OPTION

**N** Non-adjustable