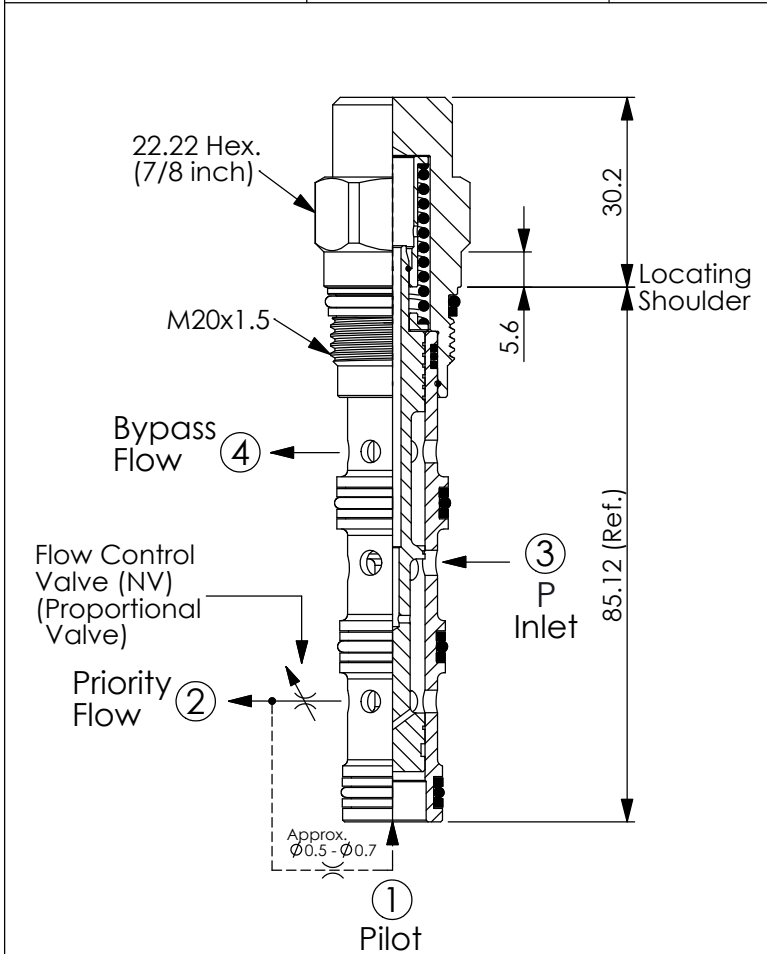
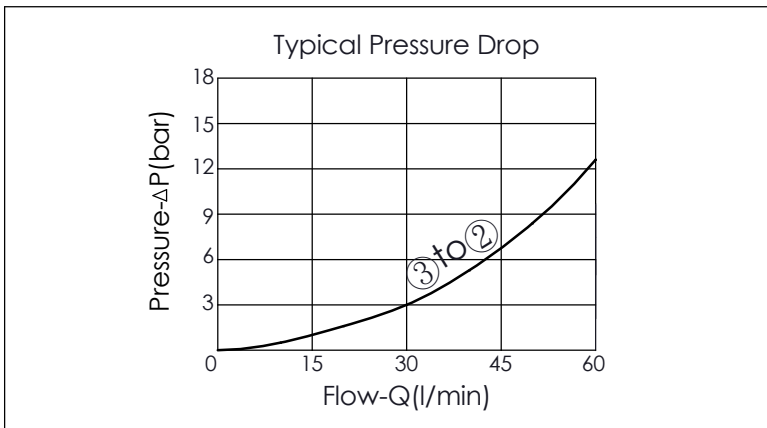


Ordering Code: **LR-31A-X-Y-Z**

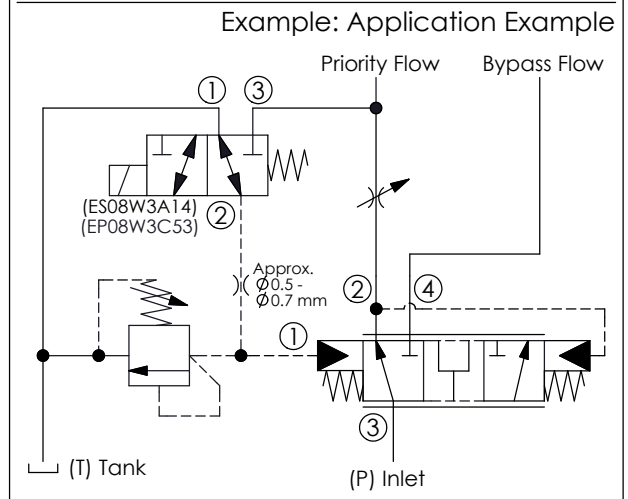
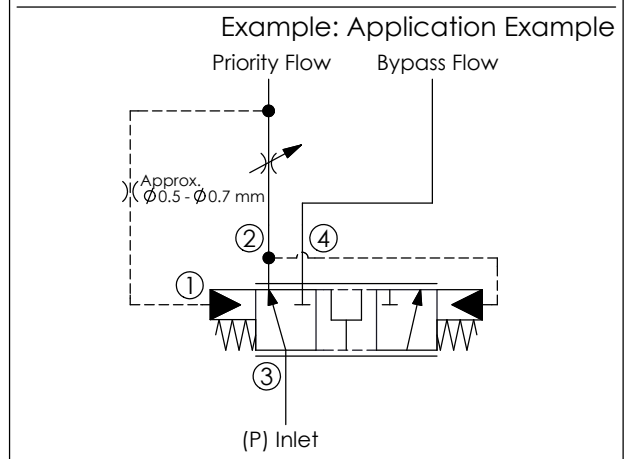
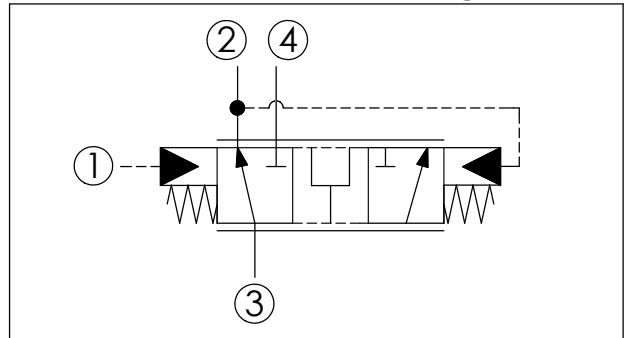


UNIT:mm  
Illustrations / detail are for reference only. Data subject to change.



X	OPERATION
41	Pilot at Port ①

Y	SPRINGS
	Differential pressure (ΔP)
50	5.0 bar
70	7.0 bar



TECHNICAL DATA	
Max. Operating pressure: 350 bar	
Rated flow:	60 l/min
Cavity-Tooling:	31A-4
Installation torque:	40 - 50 Nm
Weight:	0.17 kg

Z	OPTIONS
N	Non-adjustable