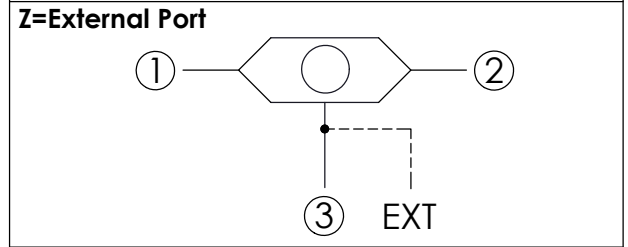
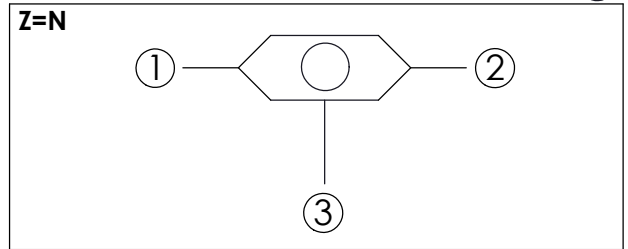


SHUTTLE VALVE (Single Ball Shuttle Valve with Signal at Port ③)

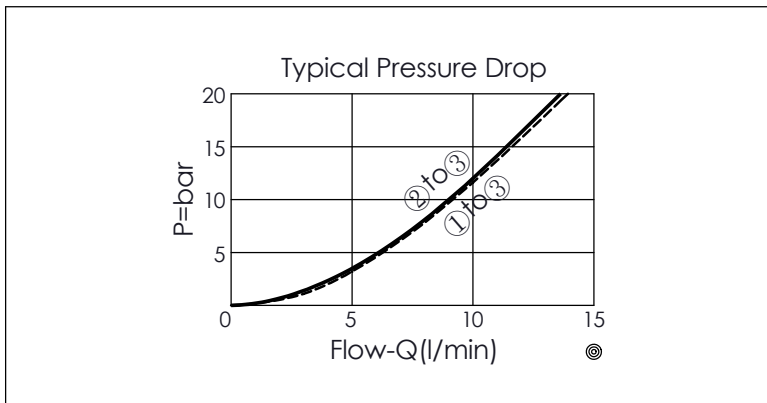
Ordering Code: **LS-11A-X-Y-Z**

UNIT:mm

Illustrations / detail are for reference only. Data subject to change.



TECHNICAL DATA		
Max. Operating pressure:	350 bar	
Rated flow:	10	l/min
Cavity-Tooling:	11A-3	
Installation torque:	40 - 50	Nm
Weight:	0.13	kg



X	OPERATION
33	Signal at Port ③
<ul style="list-style-type: none"> Maximum Leakage Approximately (0.3 cc/min./70 bar) 	

Y	SPRING
N	Non-Spring

Z	OPTION
N	Non-adjustable
NP	Non-adjustable With stainless steel external metal components (Buna-N Seal)
G02	External G1/4" Port
S04	External SAE-4 Port (7/16"-20UNF-2B)