

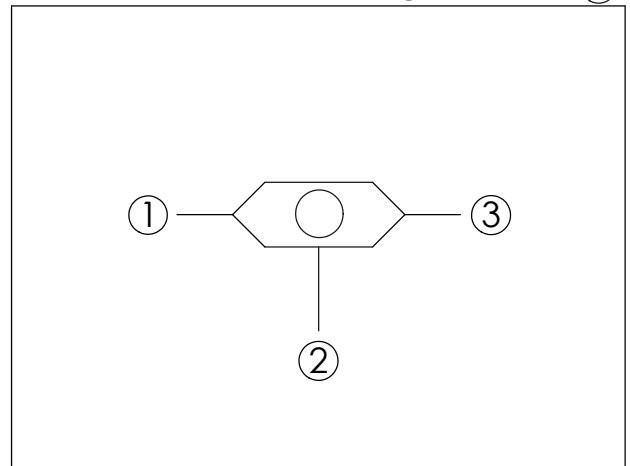
SHUTTLE VALVE (Single Ball Shuttle Valve with Signal at Port ②)

Ordering Code: **LS-08W-X-Y-Z**

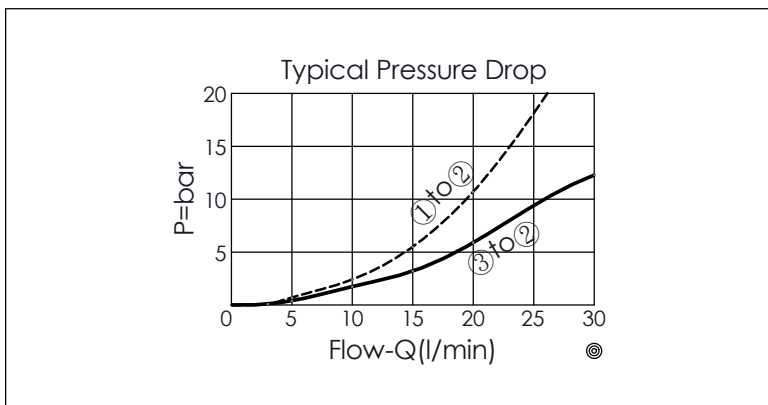
22.22 Hex. (7/8 inch)
3/4"-16UNF
Inlet ③
Outlet (Signal) ②
Inlet ①
8
Locating Shoulder
42.6

UNIT:mm

Illustrations / detail are for reference only. Data subject to change.



TECHNICAL DATA		
Max. Operating pressure:	350 bar	
Rated flow:	20	l/min
(Refer To Performance Chart)		
Cavity-Tooling:	08W-3	
Installation torque:	39 - 51	Nm
Weight:	0.07	kg



X	OPERATION	
30	Signal at Port ② (Standard)	
· Maximum Leakage Approximately (0.3 cc/min./70 bar)		

Y	SPRING	
N	Non-Spring	

Z	OPTION	
N	Non-adjustable	