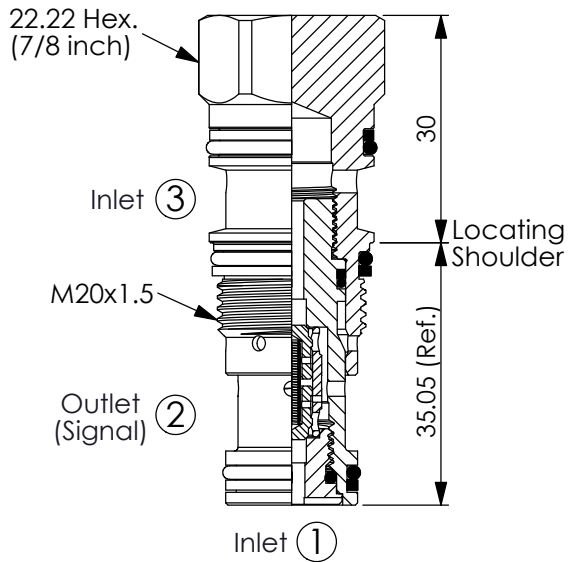
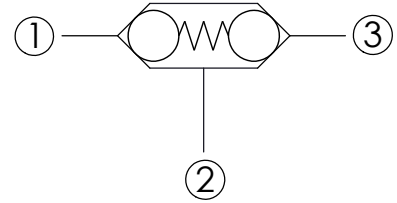


Ordering Code: **LS-11A-X-Y-Z**



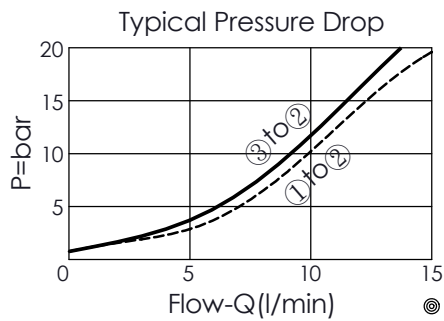
UNIT:mm

Illustrations / detail are for reference only. Data subject to change.



TECHNICAL DATA

Max. Operating pressure:	350	bar
Rated flow:	10	l/min
Cavity-Tooling:	11A-3	
Installation torque:	40 - 50	Nm
Weight:	0.13	kg



X OPERATION

3B Signal at Port ② (Standard)

· Maximum Leakage Approximately (0.3 cc/min./70 bar)

Y

SPRING

N

1 bar

Z

OPTION

N

Non-adjustable